

---

# Win-GRAF Getting Started

---

By ICP DAS CO., LTD., 2014, All Rights Reserved.

ICP DAS CO., LTD. would like to congratulate you own your purchase of our Win-GRAF PACs. The ease to integration of the controller system and the power of the Win-GRAF software program combine to make a powerful, yet inexpensive industrial process control system.

## Win-GRAF PAC (Programming Automation Controller) Series of ICP DAS includes:

ViewPAC-x208:	VP-2208-CE7, VP-3208-CE7, VP-4208-CE7, VP-5208-CE7, VP-6208-CE7
ViewPAC-x238:	VP-1238-CE7, VP-4238-CE7, VP-6238-CE7
WinPAC-5000:	WP-5238-CE7
WinPAC-8000:	WP-8128-CE7, WP-8428-CE7, WP-8828-CE7 WP-8148, WP-8448, WP-8848
WinPAC-9000:	WP-9228-CE7, WP-9428-CE7, WP-9828-CE7
XPAC-8000	XP-8038-CE6, XP-8138-CE6, XP-8338-CE6, XP-8738-CE6 XP-8048-CE6, XP-8348-CE6, XP-8748-CE6

## Legal Liability

ICP DAS CO., LTD. assumes no liability for any and all damages that may be incurred by the user as a consequence of this product. ICP DAS CO., LTD. reserves the right to change this manual at any time without notice.

ICP DAS CO., LTD. constantly strives to provide our customers with the most reliable and accurate information possible regarding our products. However, ICP DAS CO., LTD. assumes no responsibility for its use, or for any infringements of patents or other rights of third parties resulting from its use.

## Trademark & Copyright Notice

The names of products are used for identification purposes only, and are the registered trademarks of their respective owners or companies.

The version number and release date of this document are listed at the bottom of each page. Users can download the latest document on website:

<https://www.icpdas.com/en/download/index.php?nation=US&kind1=&model=&kw=win-graf>

## Technical Service

Win-GRAF Web site:

[https://www.icpdas.com/en/product/guide+Software+Development\\_\\_Tools+Win-GRAF](https://www.icpdas.com/en/product/guide+Software+Development__Tools+Win-GRAF)

New Win-GRAF workbench, Lib and PAC driver:

<https://www.icpdas.com/en/download/index.php?nation=US&kind1=&model=&kw=win-graf>

Please contact local agent or email problem-report to [service@icpdas.com](mailto:service@icpdas.com)

---

# Table of Contents

---

<b>Win-GRAF Getting Started .....</b>	<b>1-1</b>
Legal Liability .....	1-1
Trademark & Copyright Notice .....	1-1
Technical Service.....	1-1
<b>Table of Contents .....</b>	<b>1-2</b>
<b>Chapter 1 Software Installation and Hardware Setting .....</b>	<b>1-3</b>
1.1 Installing the Win-GRAF Workbench .....	1-3
1.2 Run the Win-GRAF Workbench.....	1-6
1.2.1 Win-GRAF Operating Mode.....	1-7
1.2.2 Win-GRAF Operating Environment .....	1-8
1.2.3 Win-GRAF Library Manager.....	1-10
1.3 Setting the Win-GRAF PAC's IP Address .....	1-11
<b>Chapter 2 A Simple Win-GRAF Program .....</b>	<b>2-1</b>
2.1 Creating a New Win-GRAF Project.....	2-1
2.1.1 Creating a template project (Demo01) .....	2-1
2.1.2 Important project settings .....	2-3
2.2 Introduction of the Project .....	2-5
2.2.1 Demo01 - LD Program .....	2-5
2.2.2 Demo01 - Variables .....	2-7
2.3 Give it a Try .....	2-8
2.3.1 Declaring the Win-GRAF Project Variables .....	2-8
2.3.2 Declaring the I/O Variables .....	2-10
2.3.3 Creating an LD Program .....	2-12
2.3.4 Compiling the Program .....	2-18
2.3.5 Download the Program to PAC .....	2-19
2.3.6 Testing the Program .....	2-22
<b>Chapter 3 Modbus Slave: Allowing the SCADA/HMI Software to Access Win-GRAF Variables.....</b>	<b>3-1</b>
3.1 To Enable the Win-GRAF PAC as a Modbus TCP Slave .....	3-1
3.2 To Enable the Win-GRAF PAC as a Modbus RTU Slave .....	3-7
<b>Appendix A Data Types and Ranges .....</b>	<b>1</b>
<b>Appendix B Troubleshooting while On-Line the PAC .....</b>	<b>2</b>

# Chapter 1 Software Installation and Hardware Setting

## 1.1 Installing the Win-GRAF Workbench

Before installing the Win-GRAF Workbench, check the installation environment on your PC.

### System requirements:

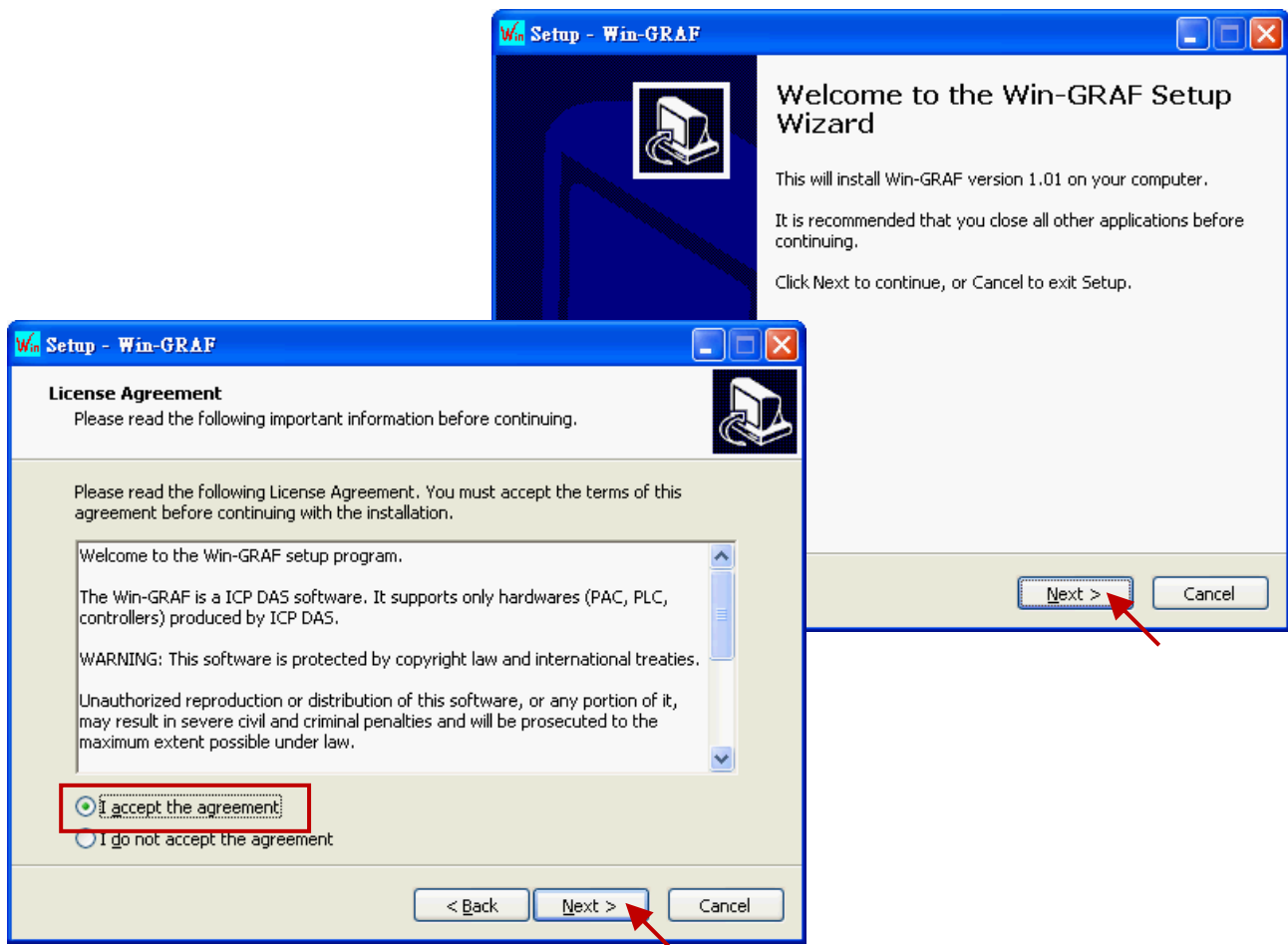
- **O.S.:** Windows XP, Windows Vista, Windows 7, Windows 8 (32-bits or 64-bits)
- **Microsoft .Net Framework 3.5** (Download it on the Microsoft web site: <http://www.microsoft.com/zh-tw/download/details.aspx?id=22>)
- **RAM:** 1 GB minimum (Recommended: 2 GB or more)
- **Available hard-disk space:** 200 MB minimum

### Installation Steps:

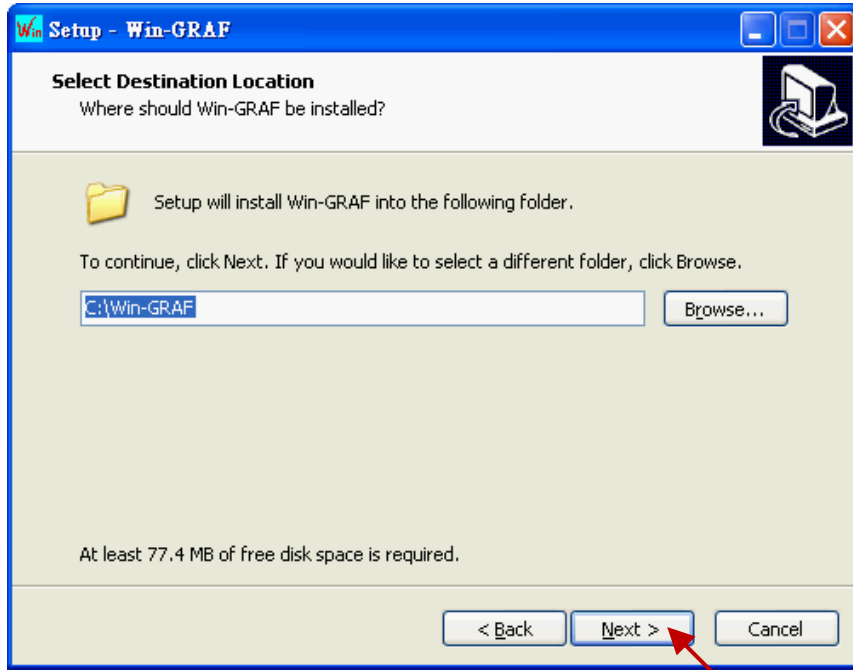
1. Double-click the “Win-GRAF-setup-ver-x.xx.exe” file in the Win-GRAF installation CD.  
(or download the Win-GRAF Workbench on the website:  
<https://www.icpdas.com/en/download/show.php?num=711>)



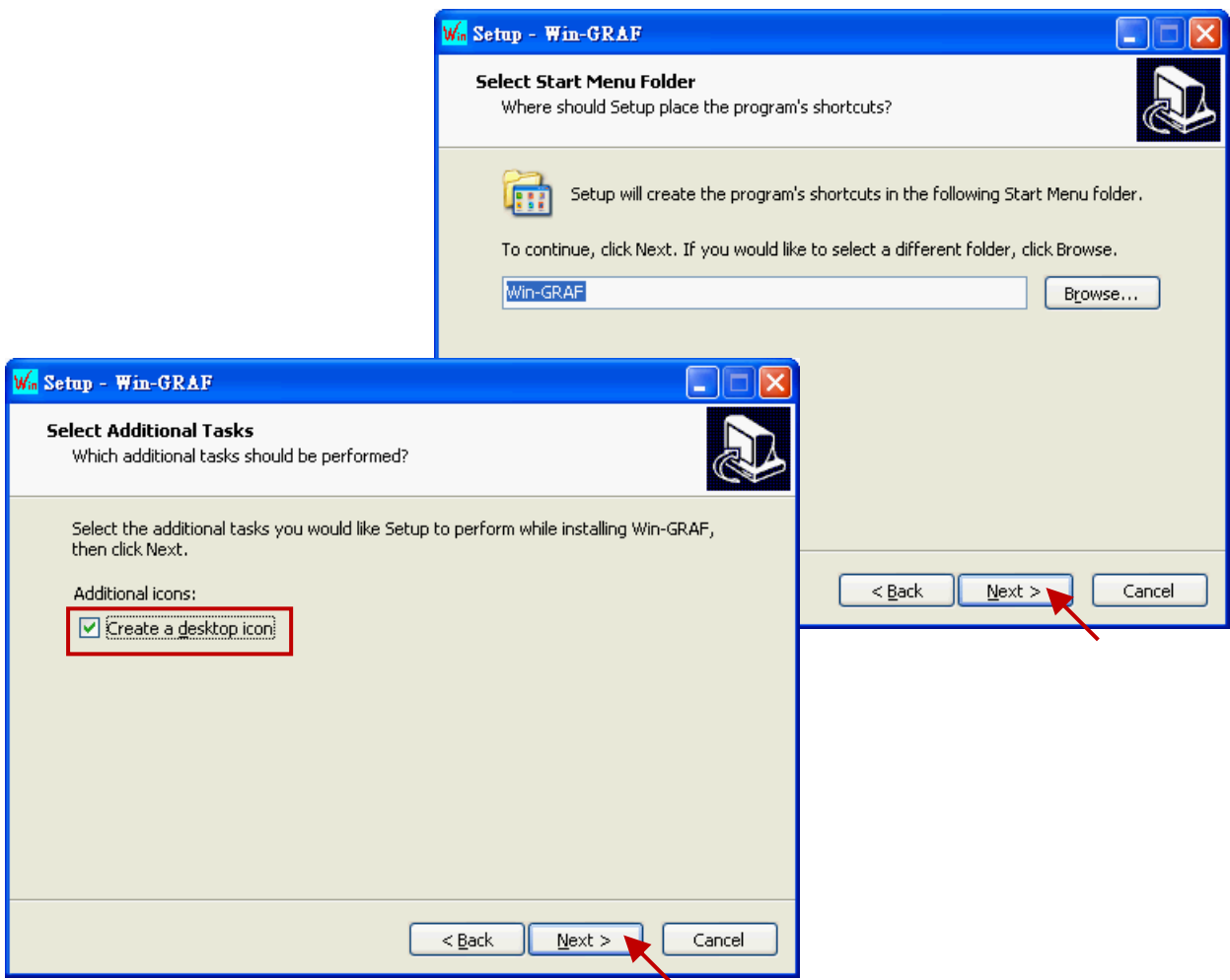
2. Click “Next” to continue and then select “I accept the agreement”, then click “Next” to continue.



3. Recommend to use the default installation path (i.e., “C:\Win-GRAF”) and then click “Next” to continue.



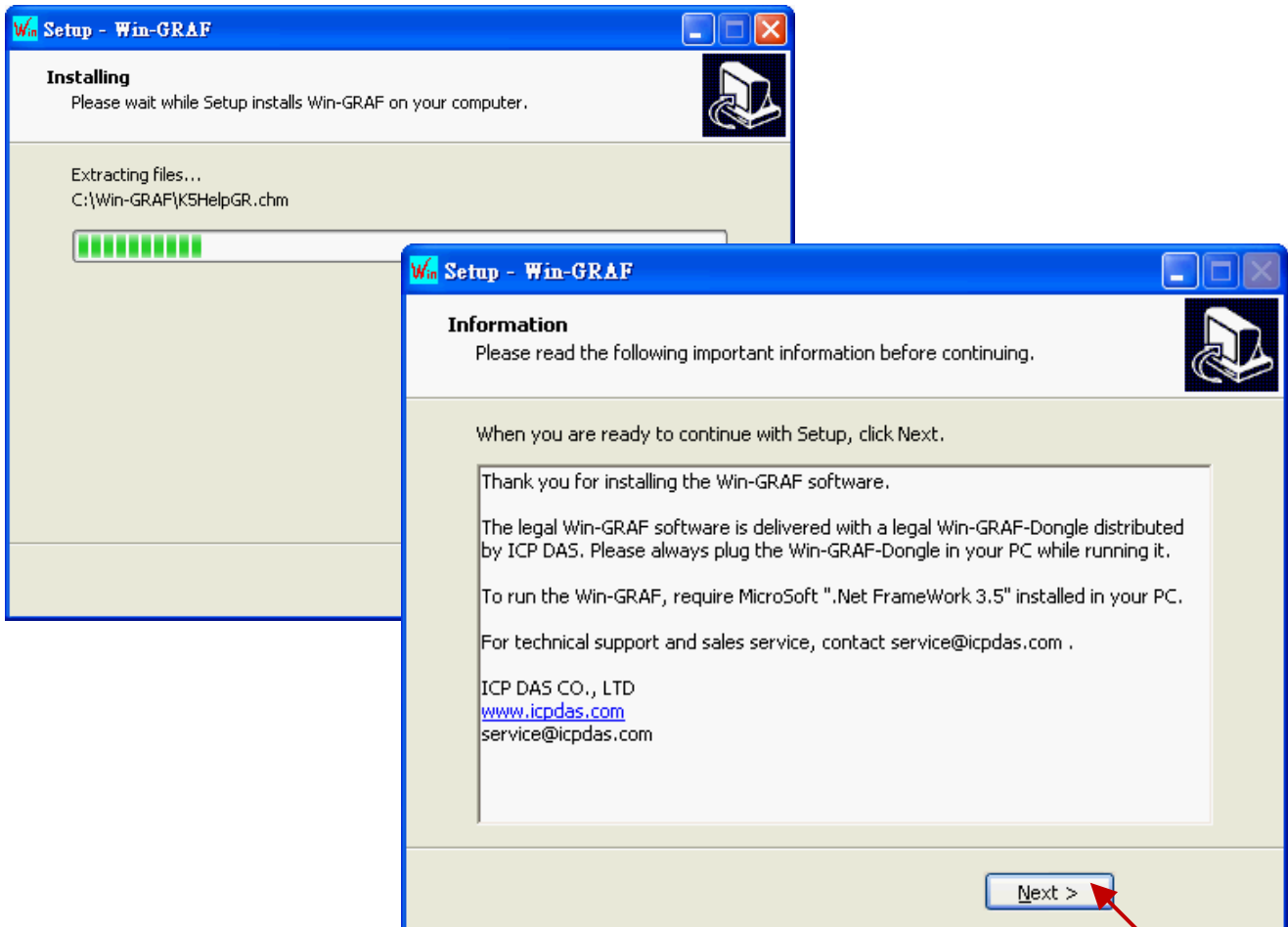
4. Click “Next” to add a “Win-GRAF” folder shortcut in the “Start” menu, and then select “Create a desktop icon” to add a desktop shortcut, then click “Next” to continue.



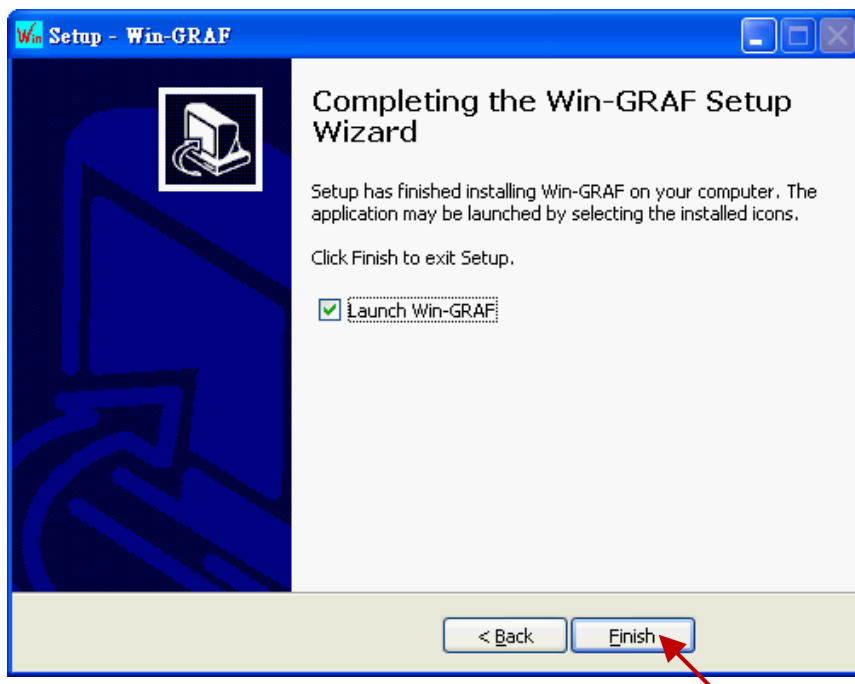
5. Click “Install” to begin installing the Win-GRAF Workbench.



6. Before the end of the installation, you will see a pop up window and it displays:
- a. The legal Win-GRAF Workbench is delivered with a legal Win-GRAF Dongle distributed by ICP DAS. Please always plug the Win-GRAF Dongle in your PC while running it.
  - b. To run the Win-GRAF, require Microsoft “.Net FrameWork 3.5” installed in your PC.

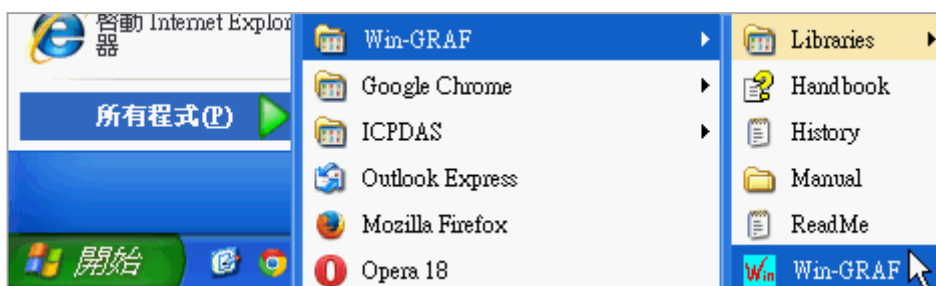


7. By now, you have completed the Win-GRAF installation, then click “Finish” to exit this window. (Select “Launch Win-GRAF” to auto-run the Win-GRAF after completing the setup. If there is no Win-GRAF Dongle in your PC, the Win-GRAF Workbench will run in Demo mode.)



## 1.2 Run the Win-GRAF Workbench

Before running the Win-GRAF Workbench, make sure the Win-GRAF Dongle is plugged into your PC. Without using a Win-GRAF Dongle, the Win-GRAF Workbench will run in Demo Mode. Open the Windows Start menu, click on “Win-GRAF” folder and “Win-GRAF” to open this software.



### Description of the “Win-GRAF” folder:

**Libraries:** For users to create their own function or modify an exist function.

**Handbook:** The manual details the software interface, programming environment, programming languages, and so on, provided by COPALP.

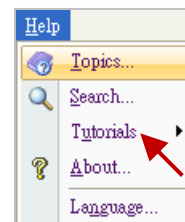
(Or click the [Help] > [Topics] from the Win-GRAF menu bar)

**History:** The modification history and features added of the Win-GRAF Workbench.

**Manual:** The Win-GRAF manual provided by ICP DAS.

(Or click the [Help] > [Tutorials] from the Win-GRAF menu bar, the manual is located in the path “C:\Win-GRAF\Tutorials”)

**ReadMe:** The notice for the Win-GRAF Workbench.



### 1.2.1 Win-GRAF Operating Mode

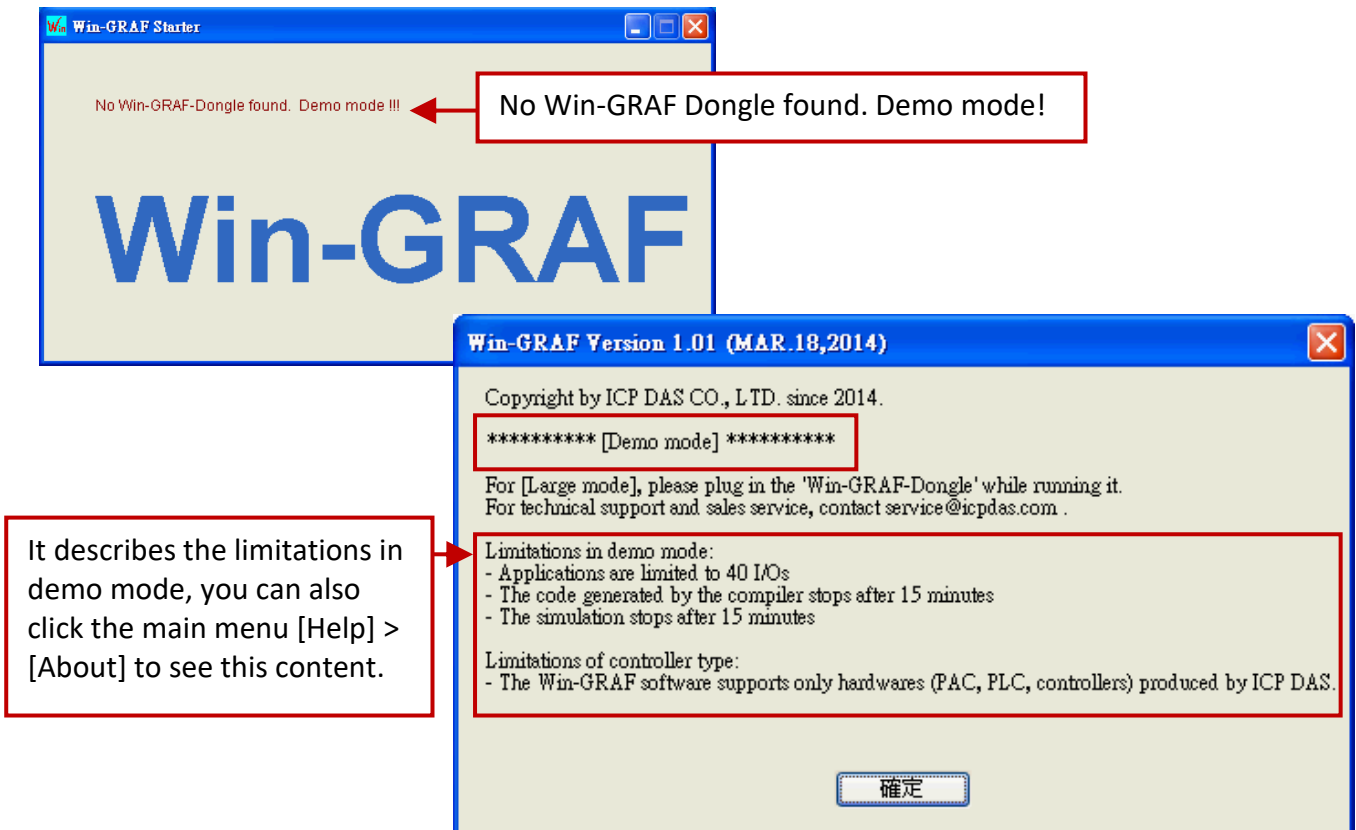
The Win-GRAF Workbench provides two operating modes:

“Demo Mode”: Without using a Win-GRAF Dongle. The compiled Win-GRAF project can run for 15 minutes in the PAC. Once the time limit has expired, users must Stop/Start this project again and it only supports up to 40 I/O tags.

“Large Mode”: Using a Win-GRAF Dongle. The project can run in the PAC without the time limit.

**Demo Mode** - Without using a Win-GRAF Dongle.

The start screen will show as below after running the Win-GRAF Workbench.



**Note:** If you install the Win-GRAF Dongle in the Demo Mode, you must close Win-GRAF Workbench and then start it again to make it become Large Mode.

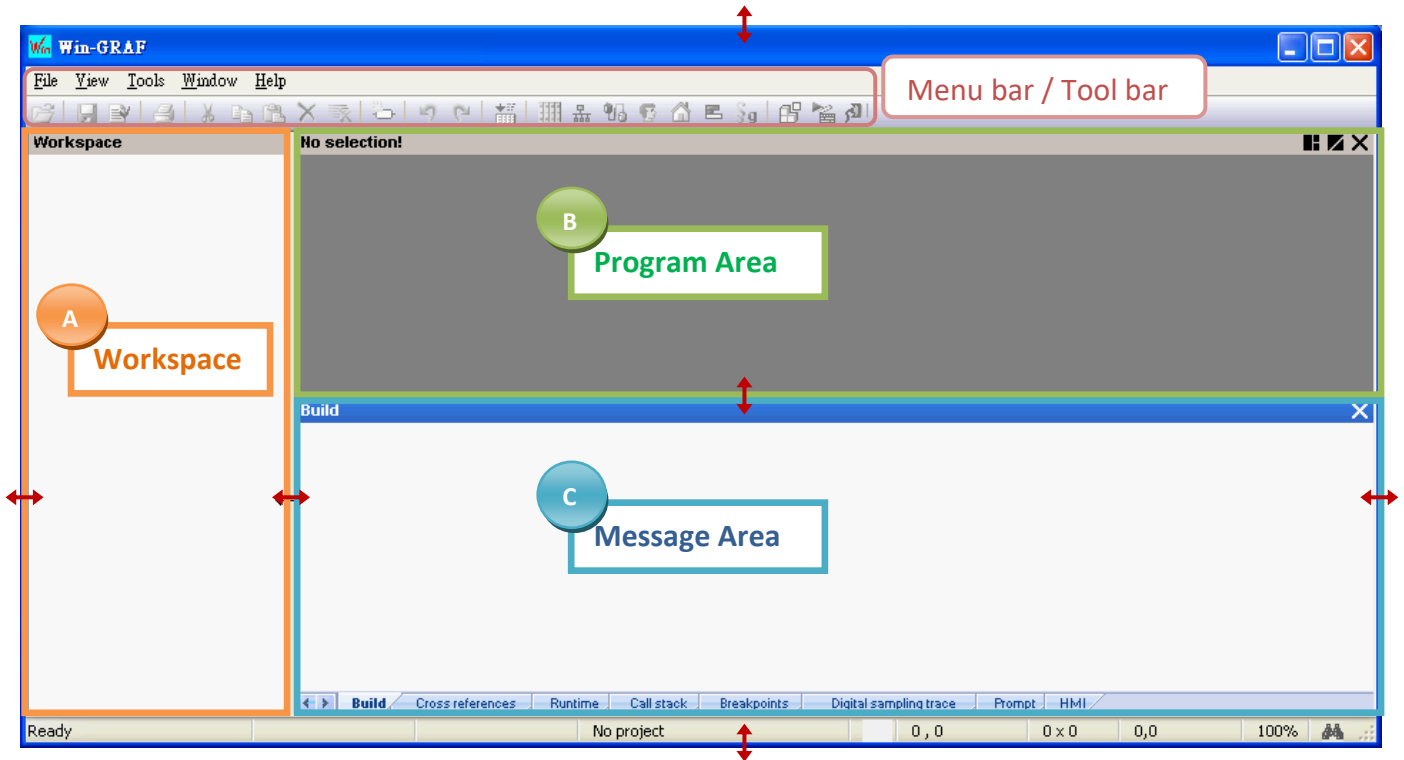
**Large Mode** - Using a Win-GRAF Dongle.

The start screen will show as below after running the Win-GRAF Workbench.



## 1.2.2 Win-GRAF Operating Environment

Run the Win-GRAF and then the main screen will show as below:



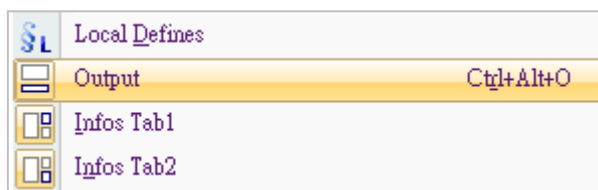
- A. The Workspace: It allows users to create project lists, and add/open the Win-GRAF program as well as the related settings. Moreover, the new project can be created by using a project template.
- B. The Program Area: It used to show/edit the program and can be divided into more function area. (Refer [Section 2.2.1](#))
- C. The Message Area: It used to show compiler messages and provides more diagnostic tools.

### Tips:

1. To resize a window, click and drag the side or corner of the window to change its size.
2. Press the "F1" key to open the user manual (i.e., HTML Help).

### Hind or Show the window

If you carelessly closed the Variables pane or the Message Area during the programming, you can click the menu bar "View" and select the following options to open this window again.

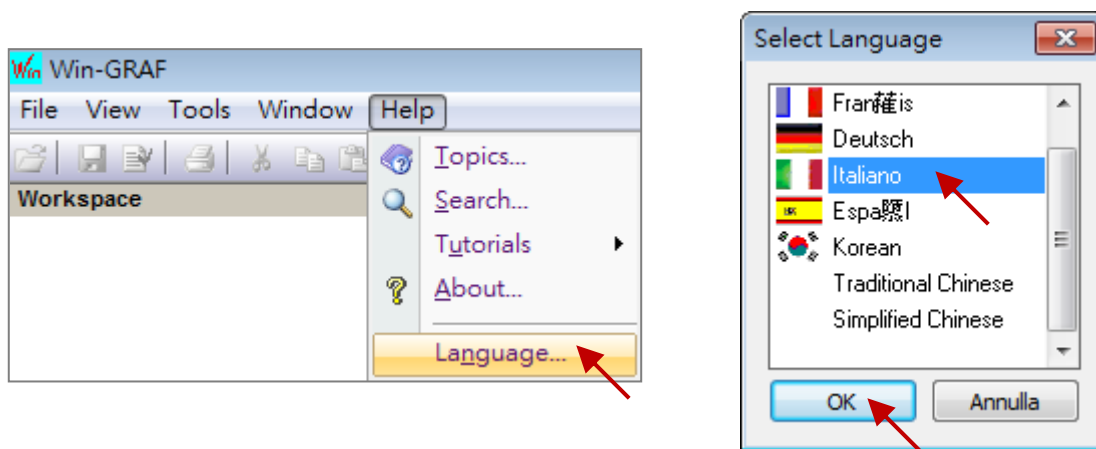


- Output: It means the Message Area.
- Infos Tab1: It means the Program Area – Variables pane (refer the [Section 2.2.1](#)).
- Infos Tab2: It means the Program Area - Function Blocks pane (refer the [Section 2.2.1](#)).

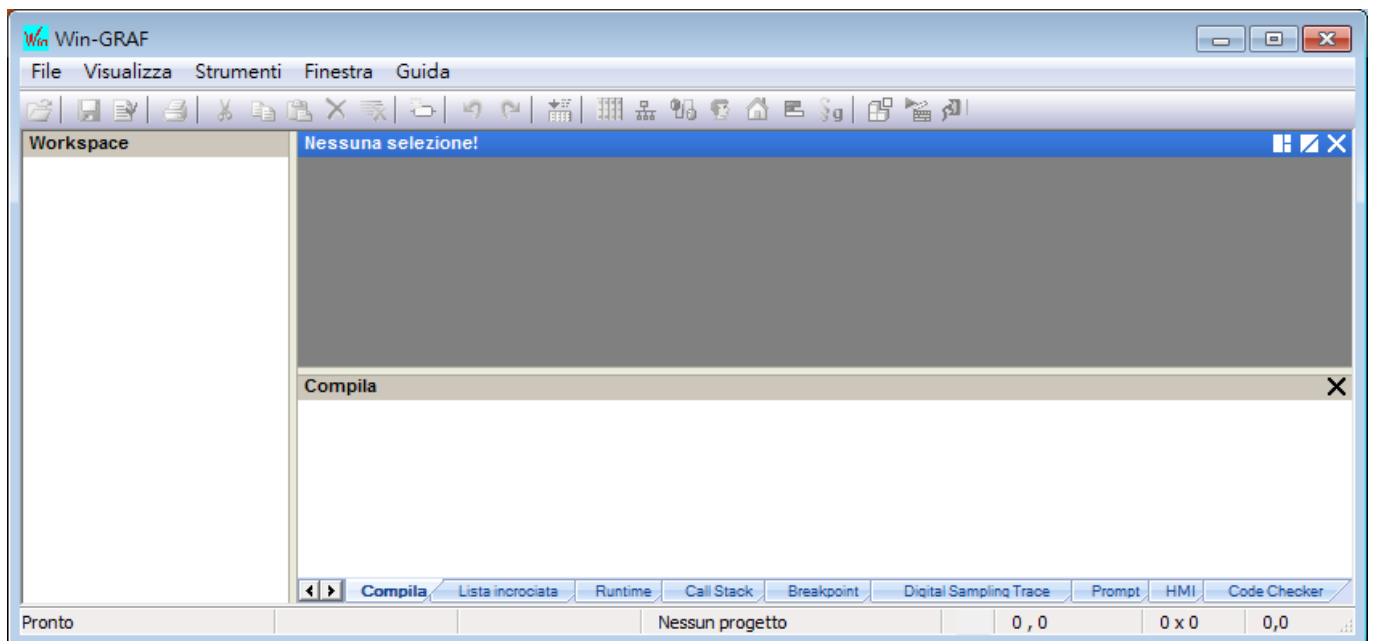


## Switching the language

1. To switch the UI language of the Win-GRAF, click “Help” and “Language” on the toolbar and then choose a language in the “Select Language” dialog box, and click “OK”.



2. The UI language will be changed after restarting the Win-GRAF automatically.



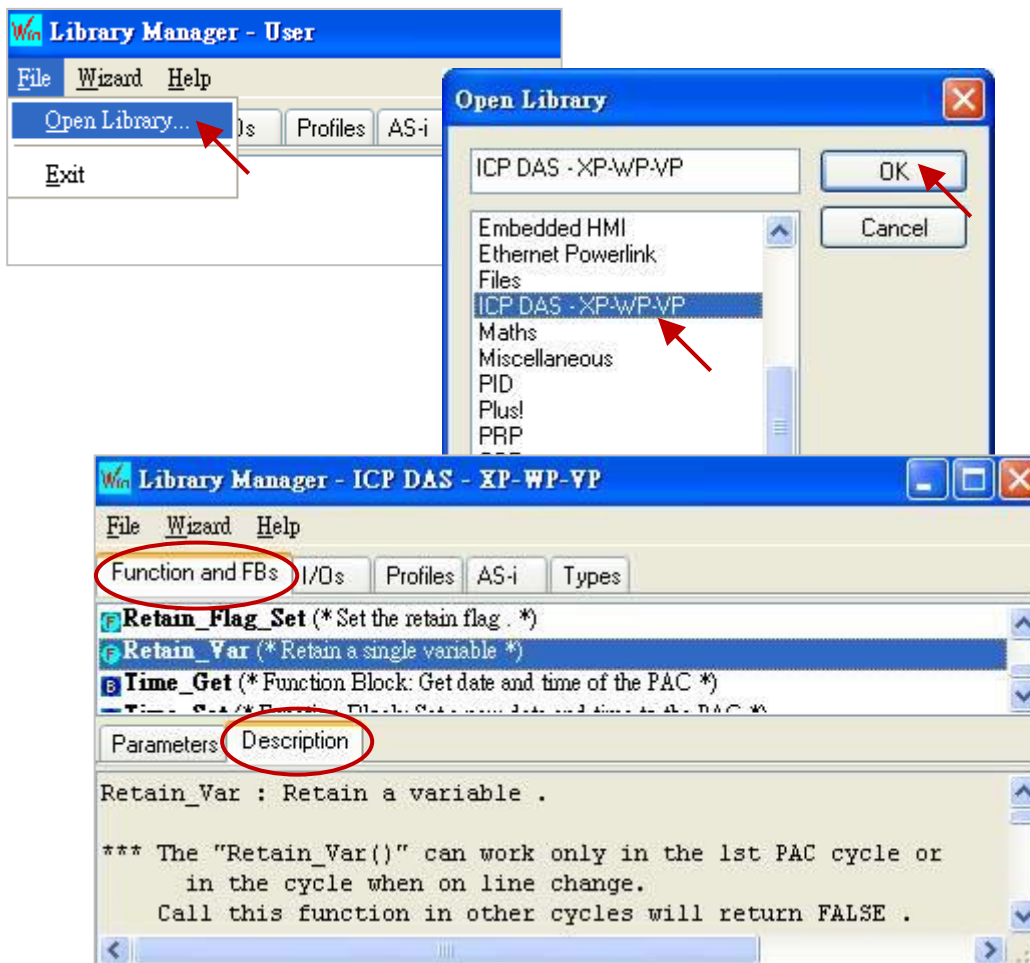
### 1.2.3 Win-GRAF Library Manager

Win-GRAF Workbench provides a Library Manager that can be used to look up all descriptions for Functions, Function Blocks and I/O Boards. (The user can refer section 11.1 of the Win-GRAF User Manual to upgrade the Win-GRAF Lib.)

1. To begin this, click the Start button and click "All Programs" > "Win-GRAF" > "Libraries" > "OEM".



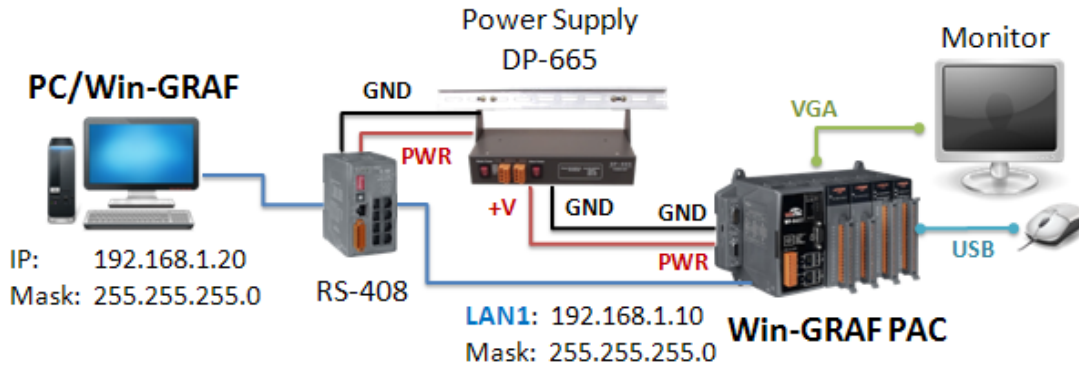
2. In the "Library Manager" window, click the menu bar "File" > "Open Library" and select "ICP DAS – XP-WP-VP" then click "OK".
3. Select any title in the "Function and FBs" tab and click the "Description" to view the usage of this Function or Function Block; Select any title in the "I/Os" tab and click the "Description" to view the usage of this I/O Boards.



### 1.3 Setting the Win-GRAF PAC's IP Address

For connecting with the PAC, the Win-GRAF Workbench needs to know the PAC IP. The following will show you how to set up the PAC IP. Using the XPAC (XP-8xx8-CE6) and the WinPAC (WP-5xx8-CE7, WP-8x48, WP-8x28-CE7) as the example:

#### Hardware Wiring Diagram



#### Notice:

For connecting properly, the PC/Win-GRAF IP and the PAC IP must on the same network segment.

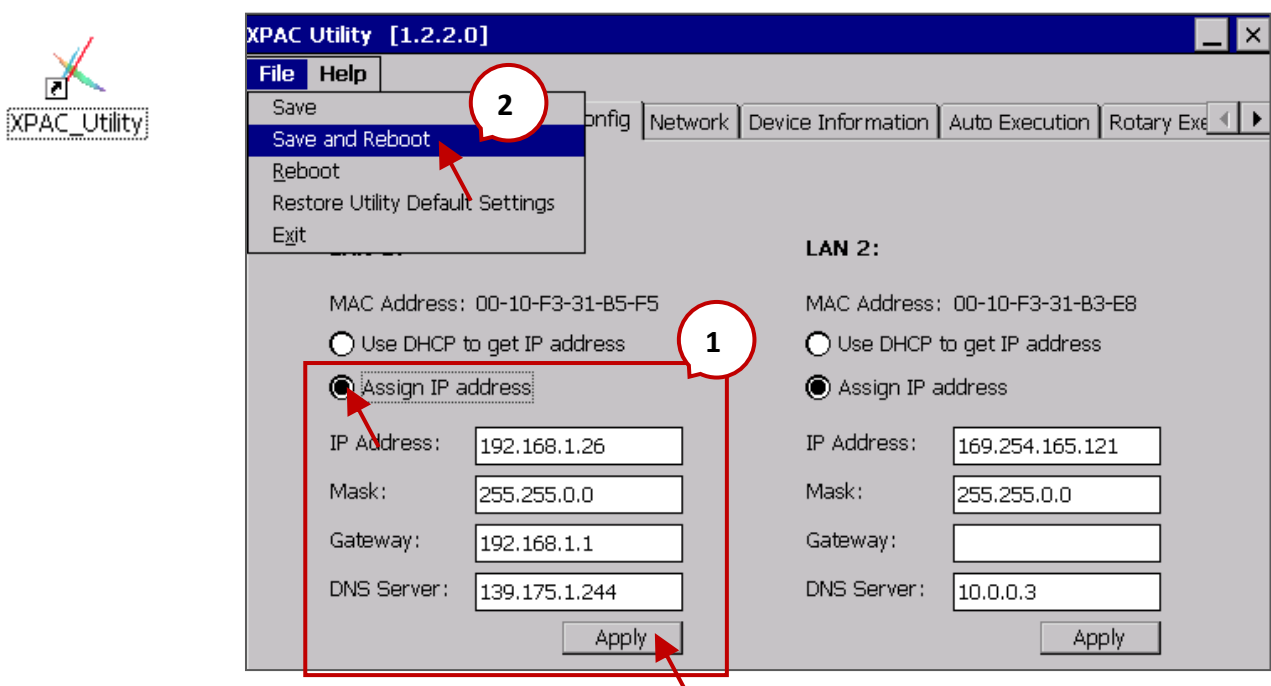
For example,

The PC's IP: "192.168.1.20" (Mask: 255.255.255.0)

The PAC's IP: "192.168.1.10" (Mask: 255.255.255.0)

#### PAC Side

Run PAC\_Utility on desktop, click "Assign IP address" and enter the IP address for LAN1 (or LAN2) in the "IP Config" screen. Next, click the "Apply" button and click "Save and Reboot" on the File menu to apply the IP settings.



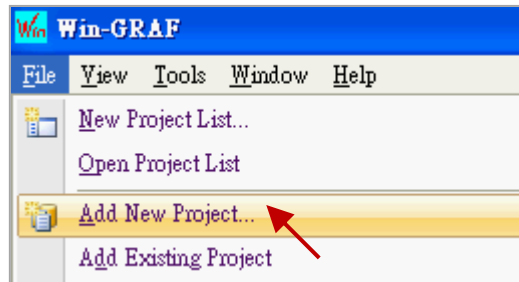
## Chapter 2 A Simple Win-GRAF Program

### 2.1 Creating a New Win-GRAF Project

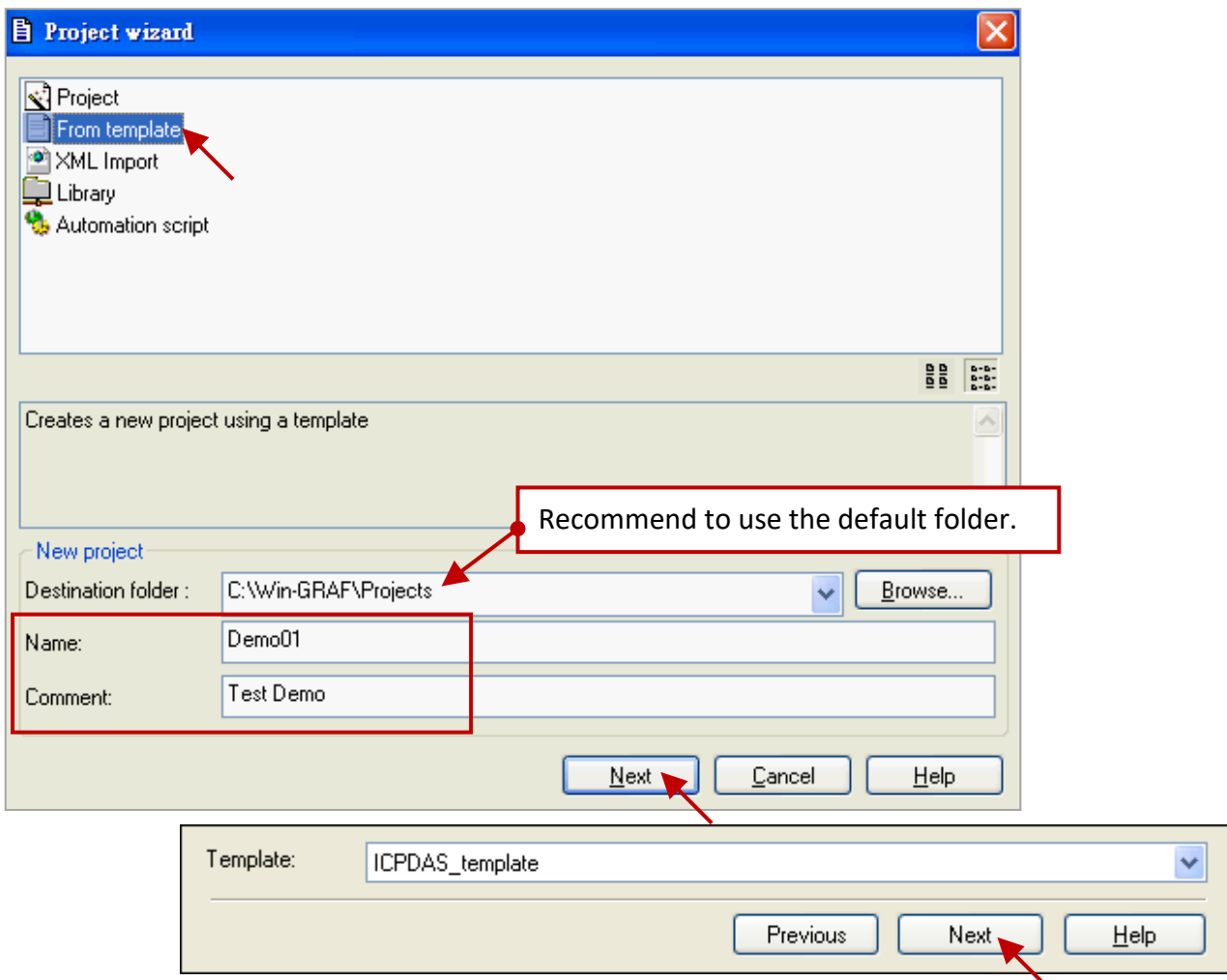
The following sections will introduce you to a simple template project that used to get/set (read/write) the Win-GRAF PAC's system time. Follow the steps below to complete this demo program.

#### 2.1.1 Creating a template project (Demo01)

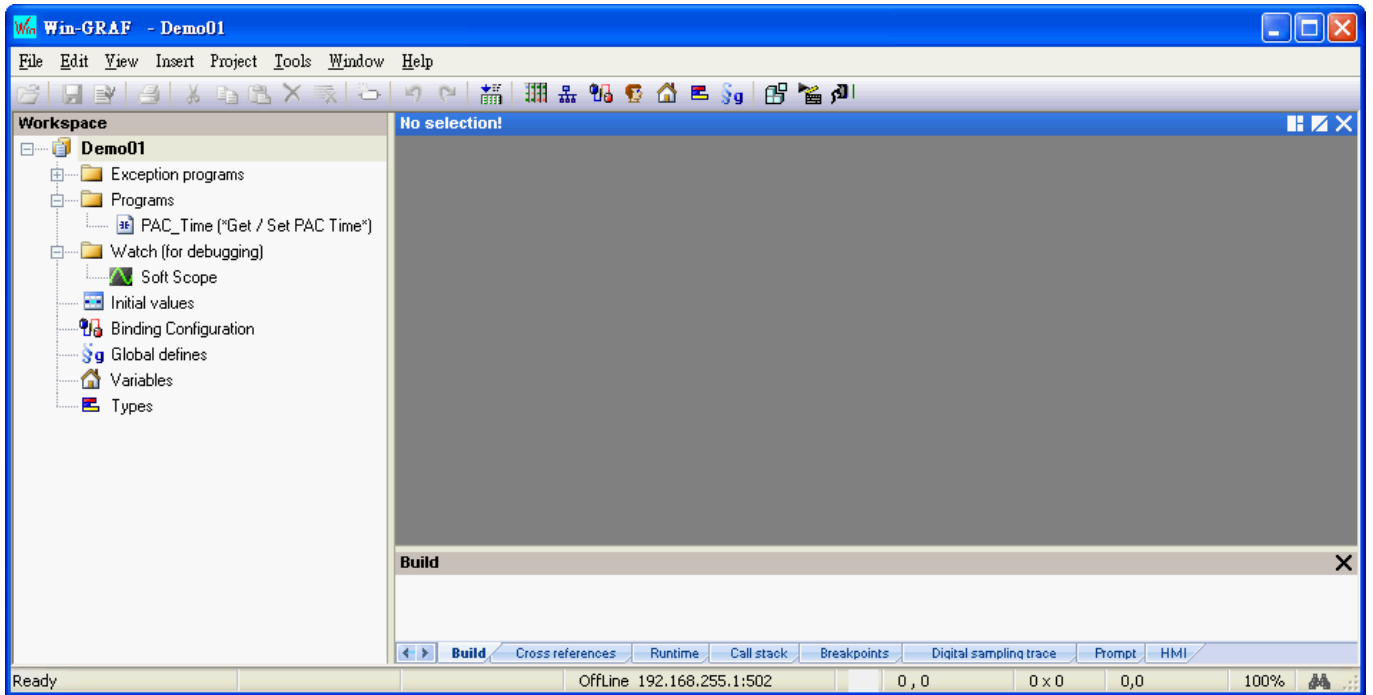
1. Run the Win-GRAF Workbench (refer [Section 1.2](#)), and click "File / Add New Project..." from the menu bar.



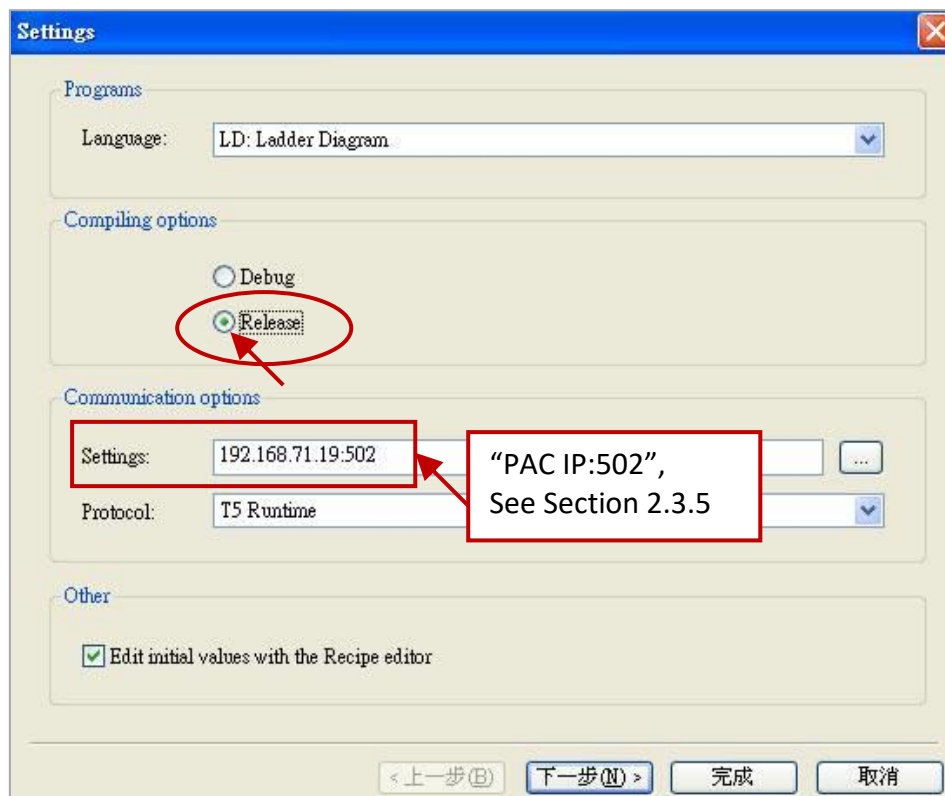
2. Click "From template" to create a project from a template, enter a project name (e.g., "Demo01") in the Name field and add a simple note in the Comment field, then click "Next". By default, it will show a "ICPDAS\_template" option provided by Win-GRAF Workbench, just click "Next" to continue.



3. Now, you have created the "Demo01" template project.



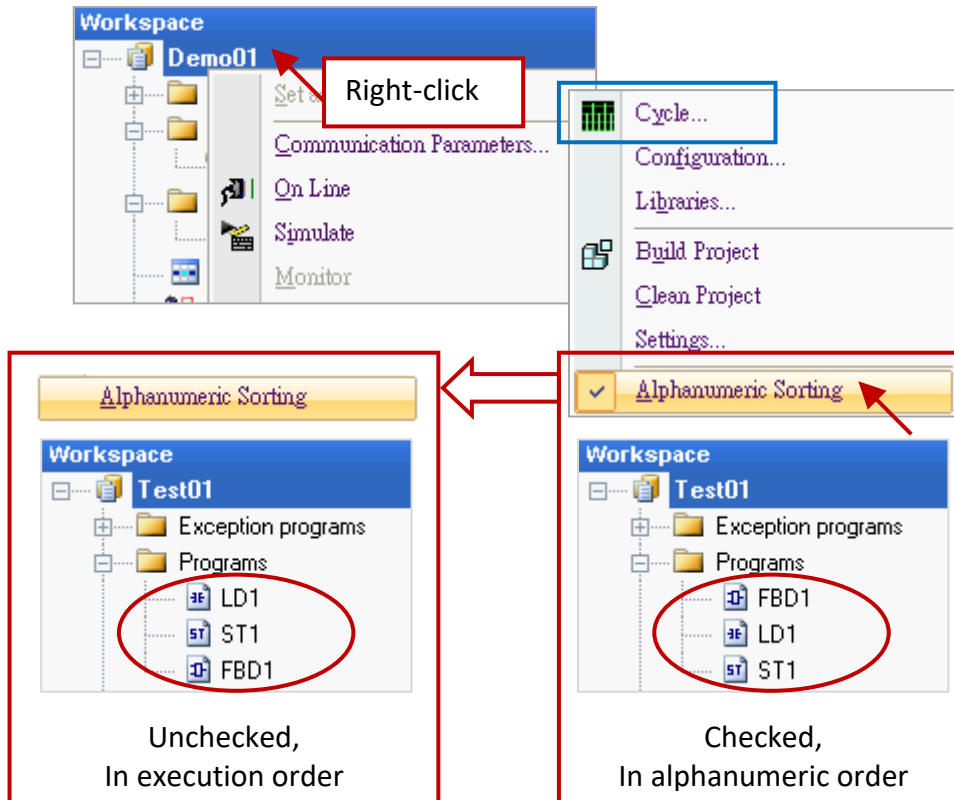
**Note:** In the demo01, we use a "From template" way to create this project. If you select "Project" in the step2, click the "Release" in the "Compiling options" setting. The others setting can be done in the following sections, just click "Next" and then "OK" button to end the settings.



## 2.1.2 Important project settings

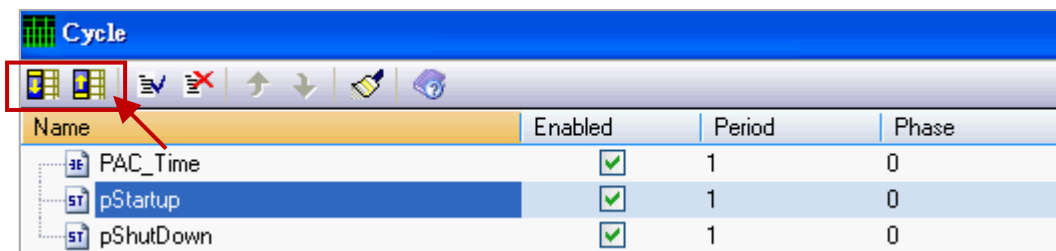
There are two important settings must be done after creating the project.

1. In the "Workspace", mouse right-click the project name (e.g., "Demo01") and then uncheck the "Alphanumeric Sorting" option (the last one). If unchecked, means the programs are in execution order ; If checked, means the programs are in alphanumeric order (e.g., FBD1, LD1, ST1).

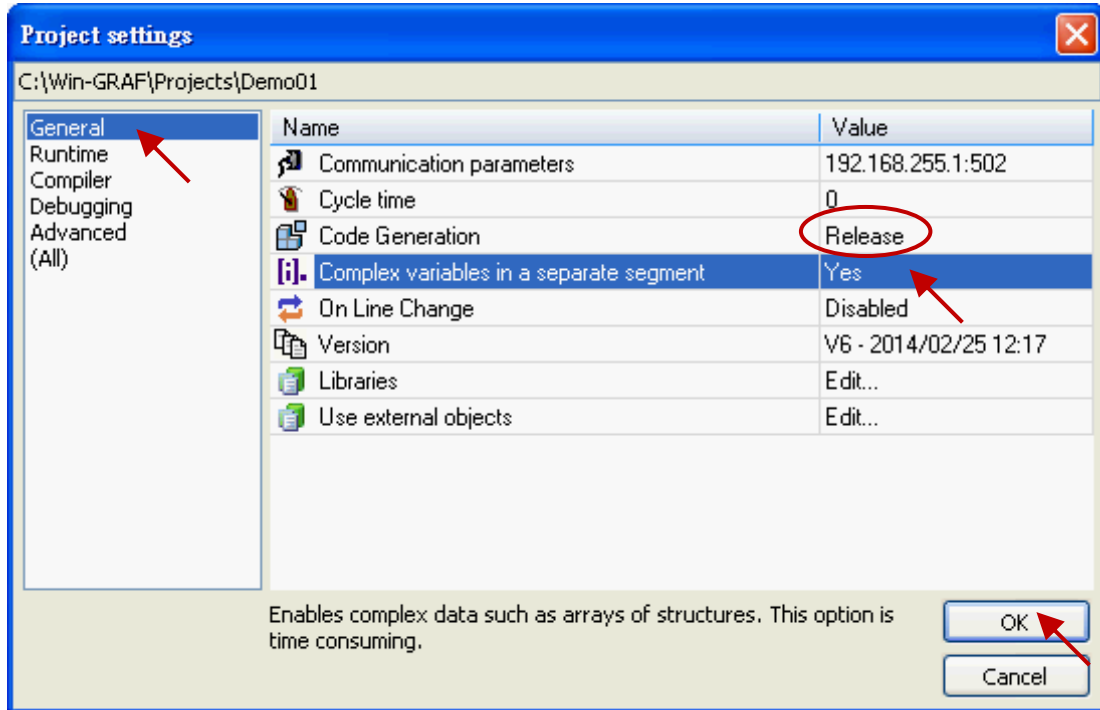
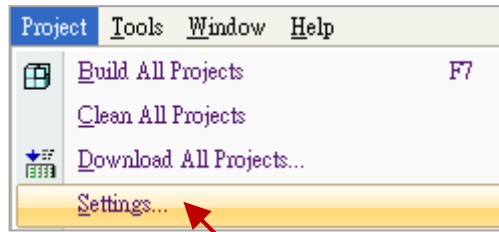


### Change the execution order of programs:

**Note:** If you want to change the execution order of programs, mouse right-click the project name (e.g., "Demo01") and click "Cycle" (as the screenshot above) to open the settings window, then click the "Move Up" or "Move Down" button to change the order.



2. If using the "Project" way to create a new project (in this example, we use the "From template" way, refer [Section 2.1.1](#) - Step 2), click the "Project" > "Settings..." from the menu bar to open the "Project settings" window. Click the "General" option and set the "Complex variables in a separate segment" to "Yes" to allow the using of complex data structures, such as arrays. Finally, click "OK" to exit the window. (**Note:** The "Code Generation" must be set to "Release".)

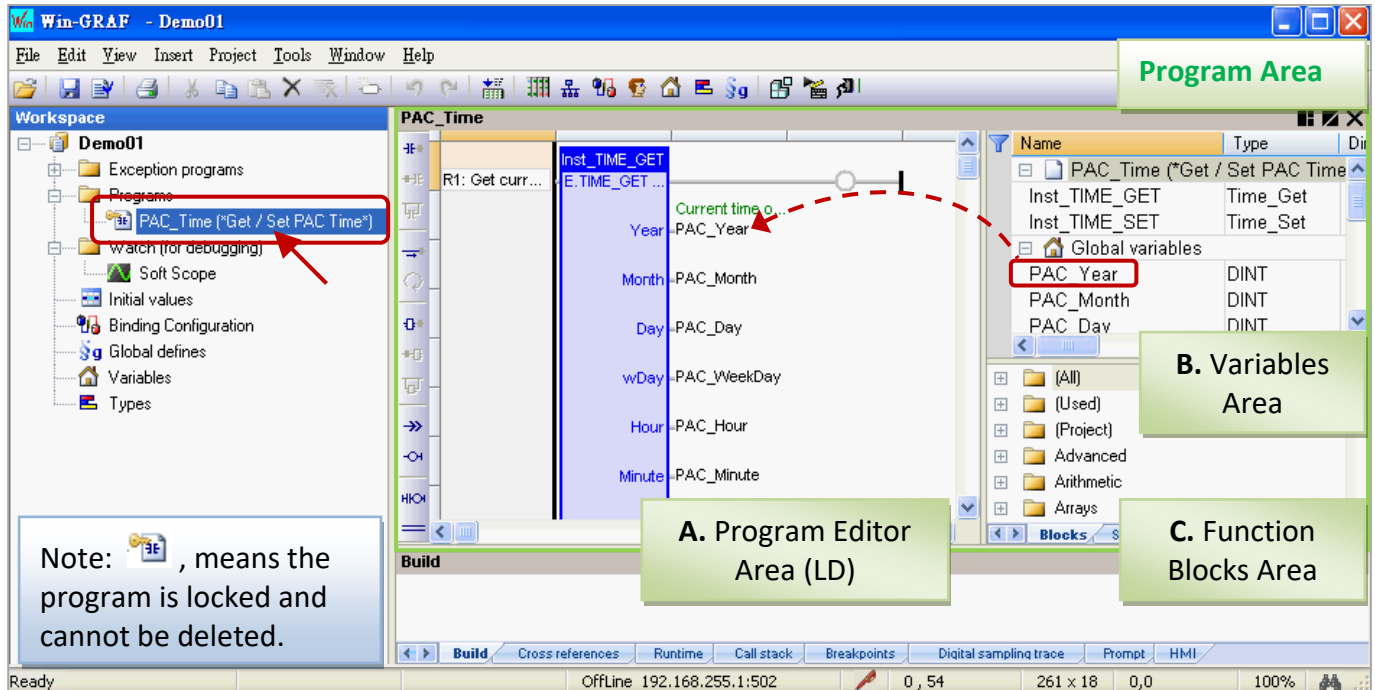


**(Note:** The "Code Generation" must be set to "Release".)

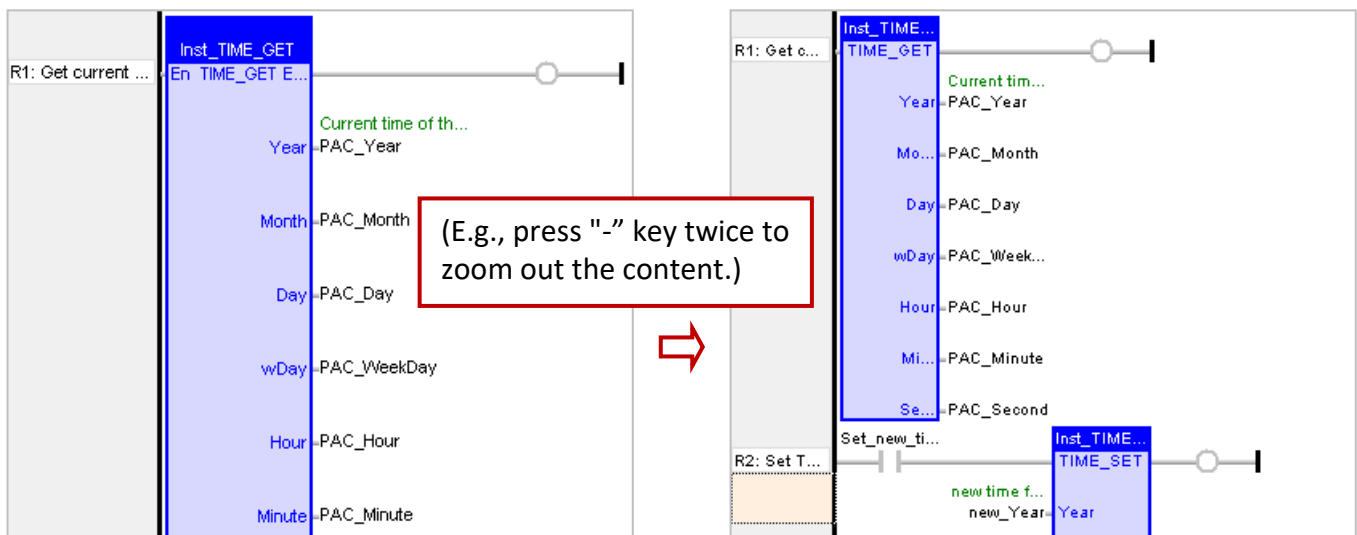
## 2.2 Introduction of the Project

### 2.2.1 Demo01 - LD Program

This program is used to read/write the Win-GRAF PAC's system time. In the Workspace, double-click the LD program name (i.e., "PAC\_Time") to open all relevant windows. As the screenshot below, the Program Area has three main parts:



**Tips:** Mouse click the Program Editor Area, and press the "+" or "-" key to zoom in or zoom out the content.

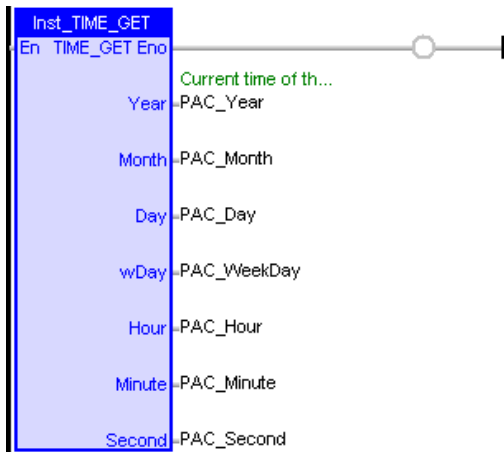


#### A. Program Editor Area (LD):

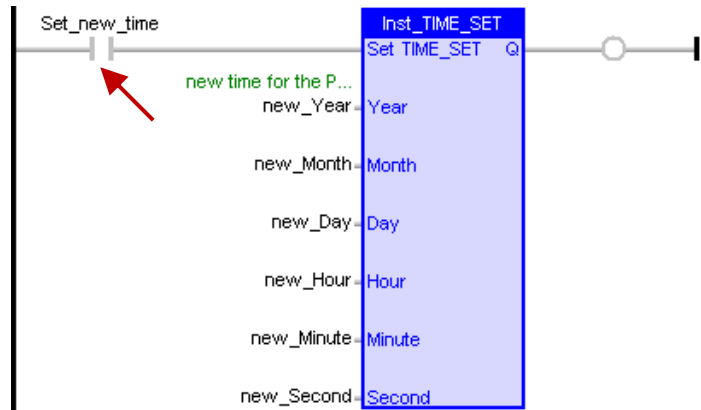
This area allows to edit or display this LD program, you can click the object button (on the left of Program Area) to add a program, and then drag-and-drop variables (in the Variables Area) onto the function block one-by-one.



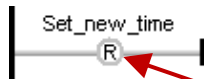
R1: Get current time of the PAC



R2: Set "Set\_new\_time" to "True" to set the new time



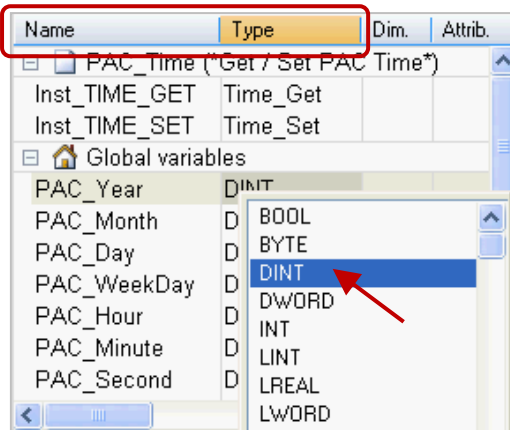
R3: Reset it to "False"



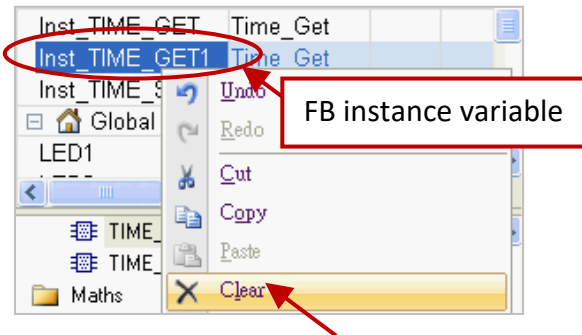
**Note:** You can press the SPACE bar to change its type (/, S, R), and press the F1 key for more details

**B. Variables Area:**

This area shows the function blocks and variables that used in this program. Mouse double-click the "Name" or "Type" item to modify its name or data type, then click "Enter" to complete the setting. (Refer [Section 2.3.1](#) for the details about variable declaration.)

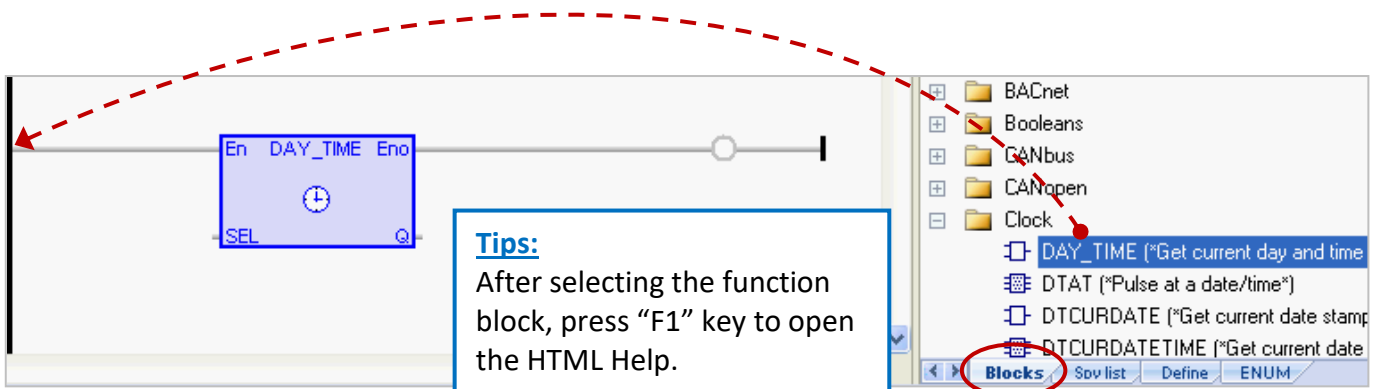


**Note:** For the function block can work correctly, the "Inst\_xxx.." FB instance variable will be automatically added when using one function block. For the safety reasons, this FB instance variable will not be automatically deleted even if the function block has been removed in the editor area. So, users can right-click the unwanted variable and select "Clear" to manually remove it.



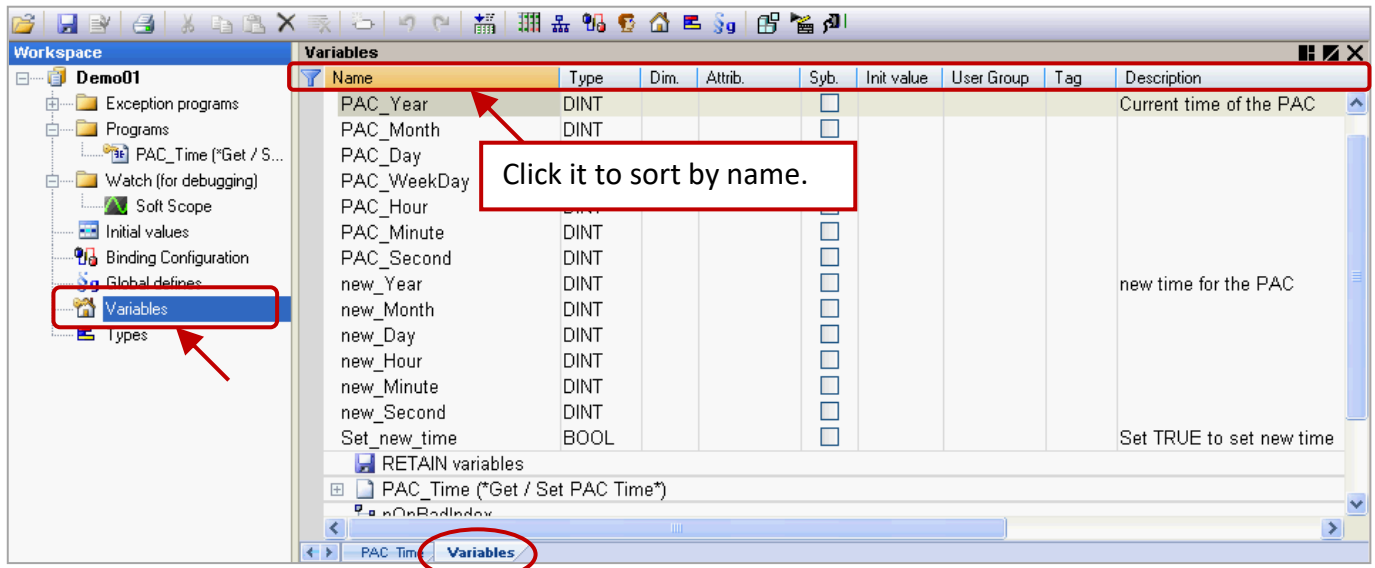
**C. Function Blocks Area:**

In the "Blocks" tab, it provides many types of the function block for users to drag and drop them to the editor area.



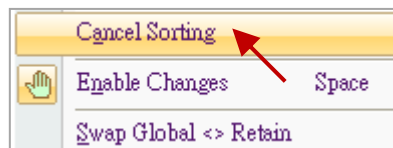
## 2.2.2 Demo01 - Variables

In the workspace, mouse double-click the “Variables” item to open the Variables window. The following screenshot shows all the needed and defined variables in this “Demo01” project.



**Tips:** In the Variables window, users can click any title field (e.g., “Name”) for sorting.

If you want to go back to the original sort order, mouse right-click anywhere and select the “Cancel Sorting” option.



**Field description:** (Press the “F1” key to look up the details)

Mouse double-click any field item to set or modify the data.

- Name:** A valid variable name starts with a letter (e.g., "A to Z" or "a to z") followed by any number of letters, numbers (e.g., "0 to 9"), or an underscore (i.e., "\_").
- Type:** Data type. (Refer [Appendix A](#) for the value range)
- Dim.:** To specify the range of an array.  
(E.g., enter “10”, means the use of the Counter [0] to [9]).
- Attrib.:** Double-click this field item to set it to “Read Only” that means users can only read this variable but cannot modify it.
- Syb.:** If checked, the variable name will also be downloaded into the PAC.
- Init value:** To set the initial value of the variable.
- User Group:** All the variables can be divided into some groups (e.g., “Group1”, “Group2”) and it is convenient for users to look up or search these variables.
- Tag:** To enter a nickname for the variable.
- Description:** To enter a simple note for the variable.


## 2.3 Give it a Try

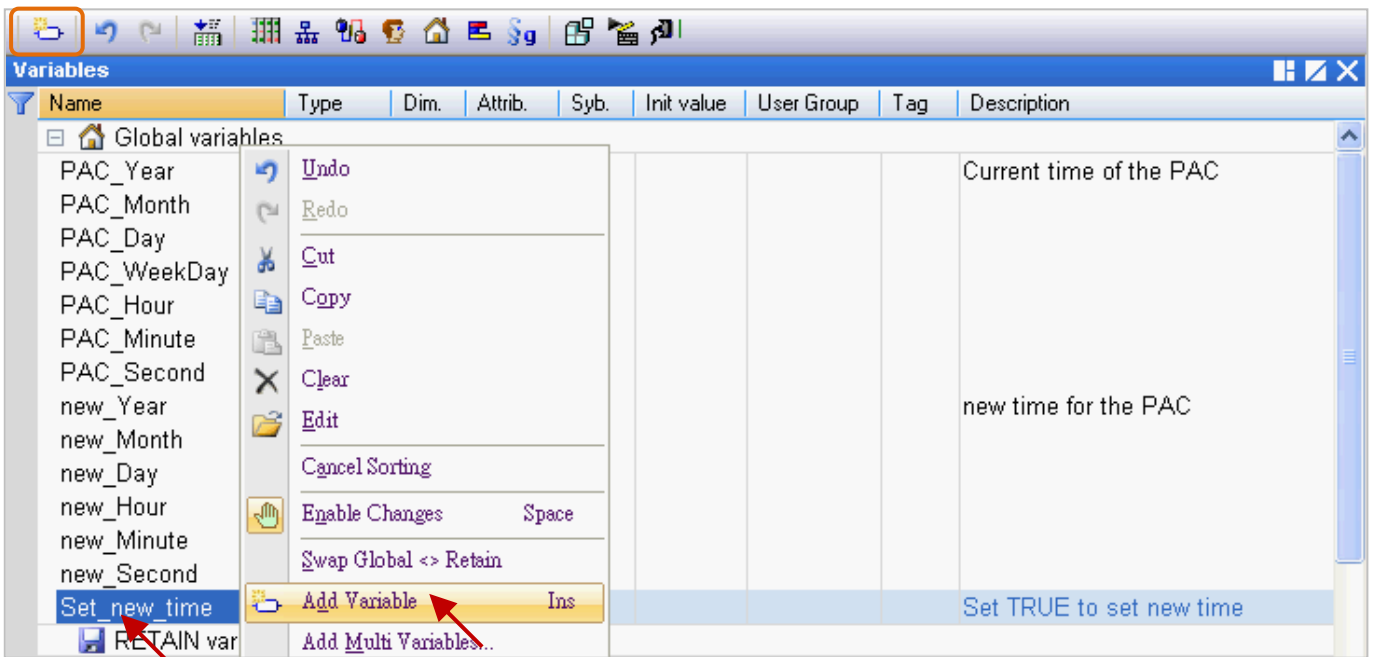
As mentioned before, we have described the LD program ([Section 2.2.1](#)) and variables ([Section 2.2.2](#)) in the "Demo01" project. The following sections will show you how to declare variables and add an LD program with the blinking function in this project.

**Note:** All the Win-GRAF PAC does not support the "ULINT" and "LWORD" data type.

### 2.3.1 Declaring the Win-GRAF Project Variables

First, we will declare two boolean variables (i.e., "LED1" and "LED2") that used in the program.

1. In the "Variables" window, mouse right-click any item in the "Name" field and select "Add Variable" (or press the "Ins" key or click the  tool button) to add a variable.



2. Double-click the new "NewVar" item and change its name to "LED1", then click "Enter" to finish the setting. In this case, the data type is "BOOL".

Name	Type	Dim.	Attrib.	Syb.	Init value	User Group	Tag	Description
Set_new_time	BOOL				<input type="checkbox"/>			Set TRUE to set new time
LED1	BOOL				<input type="checkbox"/>			

**Note:** The settings will be done only after clicking the "Enter" key.

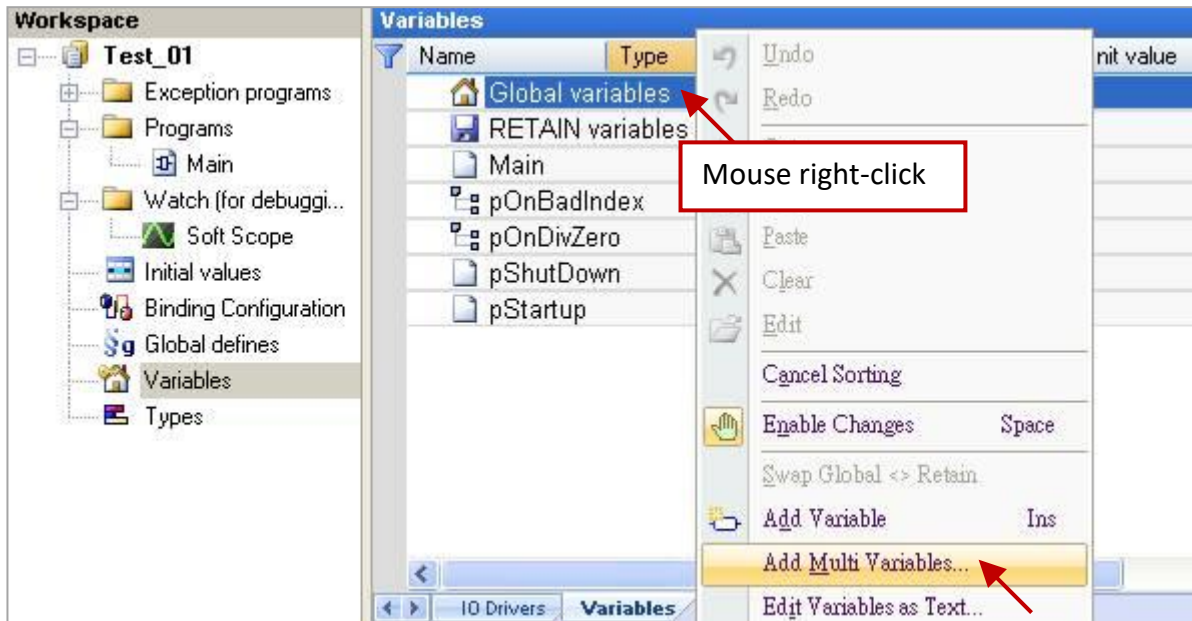
3. Follow the previous steps to add the "LED2" boolean variable.

Name	Type	Dim.	Attrib.	Syb.	Init value	User Group	Tag	Description
Set new time	BOOL				<input type="checkbox"/>			Set TRUE to set new time
LED1	BOOL				<input type="checkbox"/>			
LED2	BOOL				<input type="checkbox"/>			

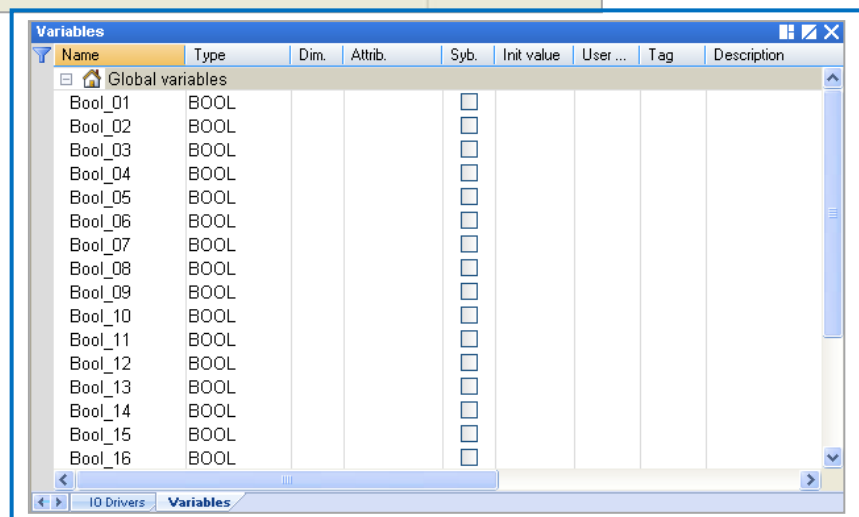
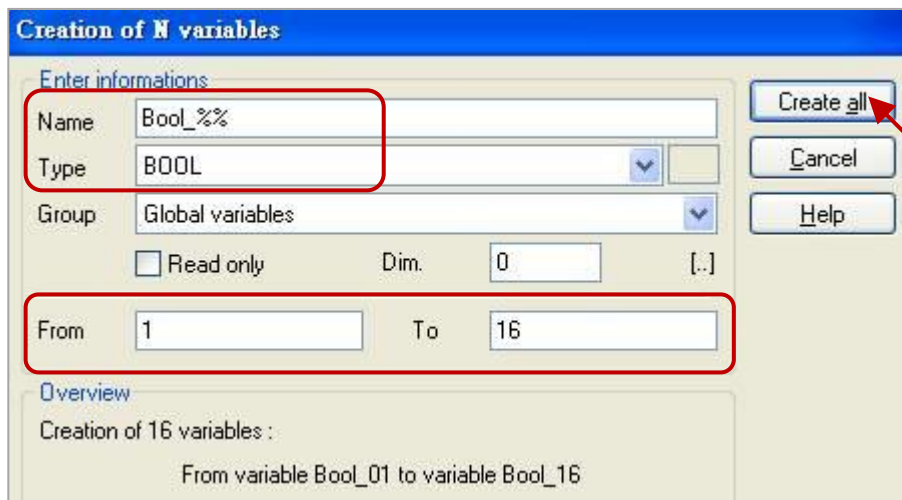
**Tips:** To set up multiple ordinal variables, enter the name "LED" (as the step2) and then press "Ctrl+C" and "Ctrl+V" twice to create "LED1" and "LED2" (auto sequential numbering), finally, delete the first variable (i.e., "LED").

## Tip #2:

1. If you need to add multiple variables (e.g., “Boo\_01 to Boo\_16”), simply right-click the “Global variables” and select the “Add Multi Variables”.



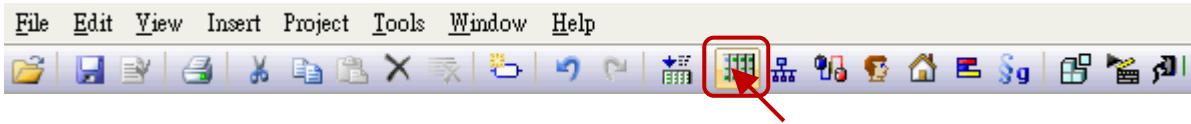
2. Follow the settings like the figure below (Name: “Bool\_%%”; Type: “BOOL”; From: 1; To: 16) to create Boolean variables (i.e., “Bool\_01” to “Boo\_16”) and then click “Create all” button to complete the settings.



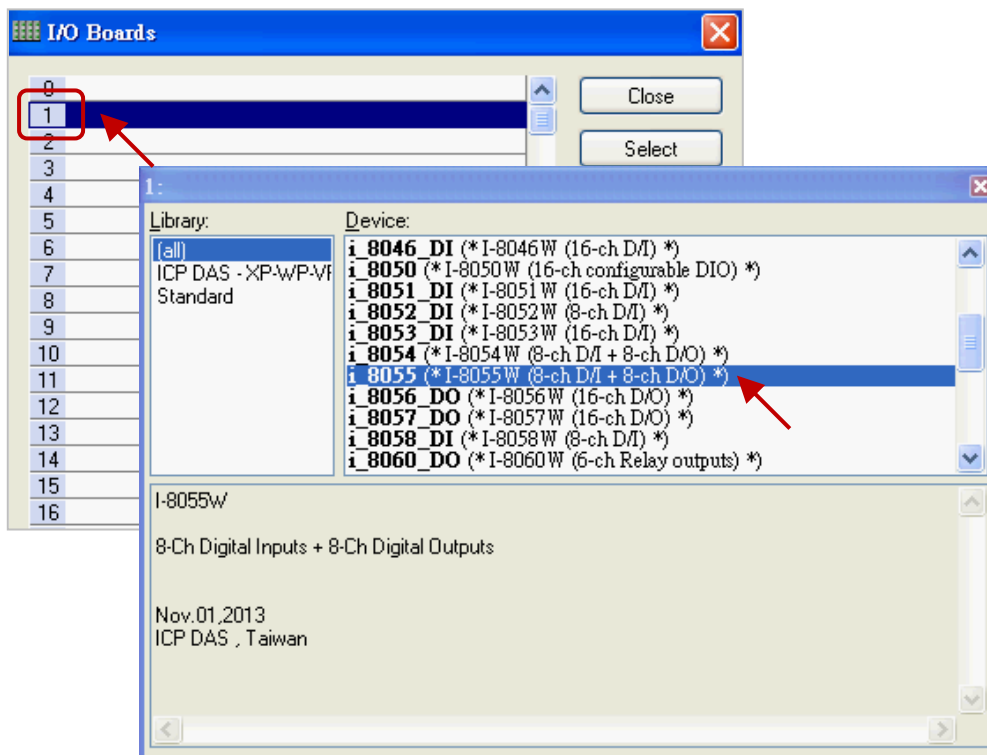
### 2.3.2 Declaring the I/O Variables

In this example, the I-8055W module that used to show the blinking feature must be plugged in the PAC's slot1. So, we need to add an I/O link to correspond to the real I/O module.

1. Click the "Open I/Os" tool button to add an I/O link.

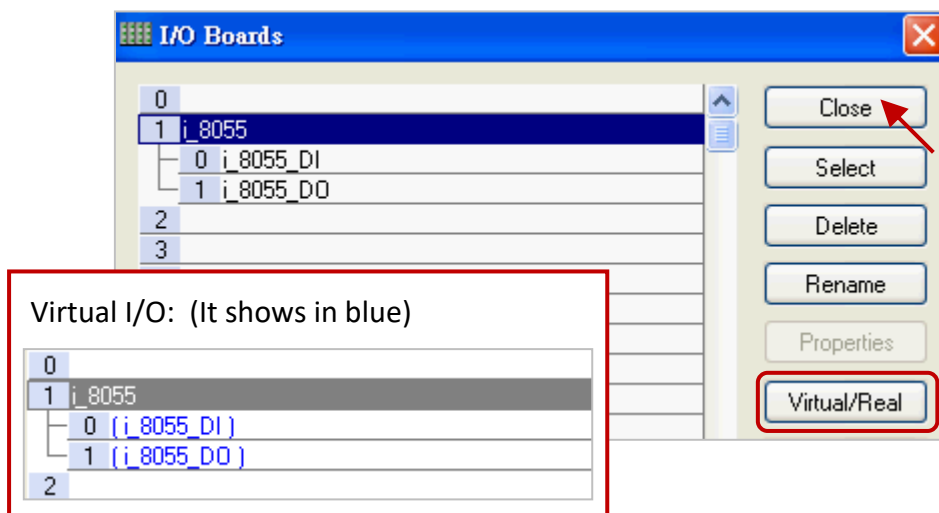


2. Mouse double-click on "Slot 1" and then double-click the "i\_8055" to select this I/O board.

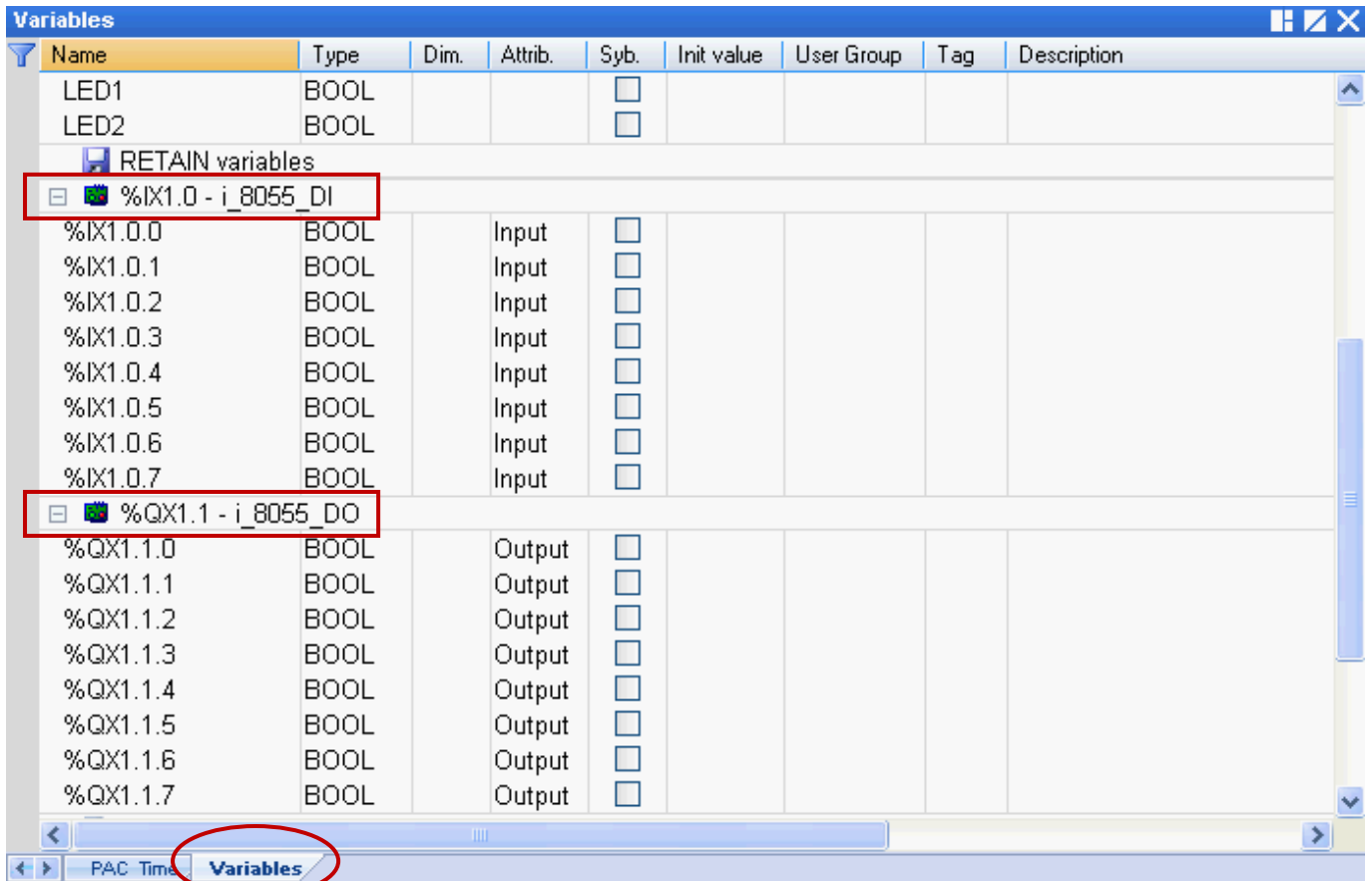


3. Click the "Close" button to exit the "I/O Boards" window.

**Note:** Click the "Virtual/Real" button to change to the Virtual I/O (for testing) or the Real I/O. (The Real I/O is used in this example).



After linking the “i\_8055” I/O board, it will automatically add 8 input & output variables in the “Variables” window.



### %IX1.0 – i\_8055\_DI

- “I” means “Input”
- “X” means “Boolean”
- “1” means “Slot 1”

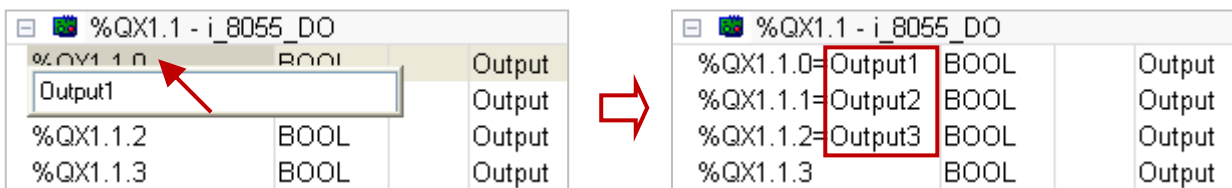
### %QX1.1 – i\_8055\_DO

- “Q” means “Output”
- “X” means “Boolean”
- “1” means “Slot 1”

### %ID or %QD

- “D” means “Integer/Real”

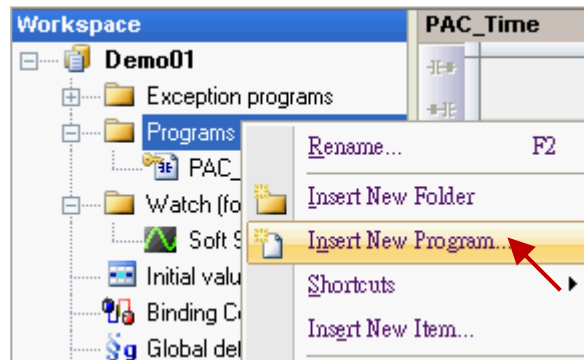
There are three output variables are used in this example, and you can modify the name for easy use. Mouse double-click the item and fill in a name, then press “Enter” key to finish the setting.



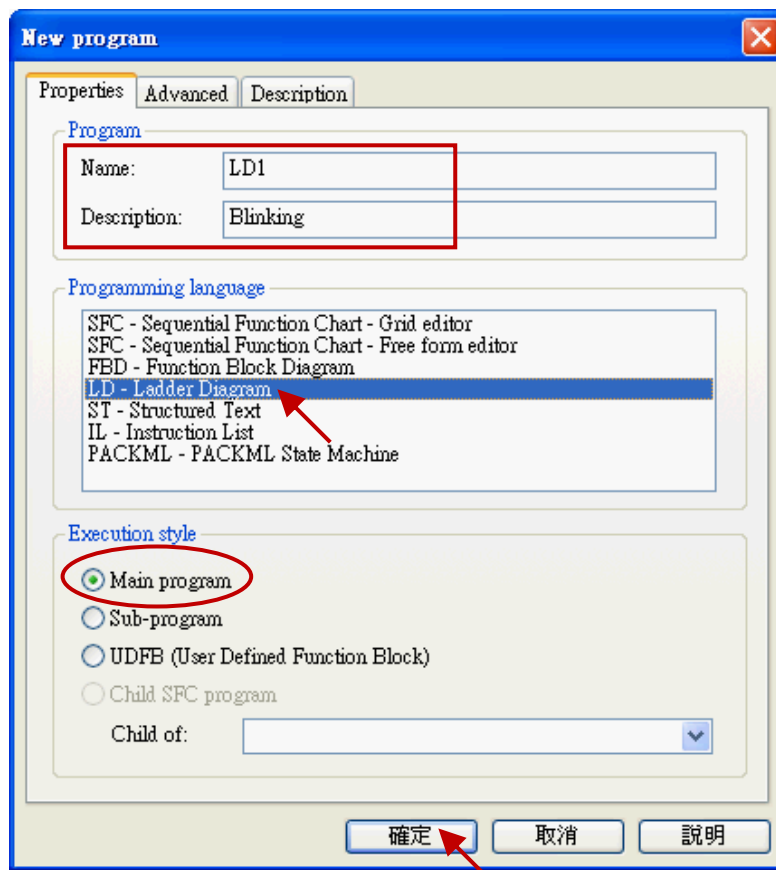
### 2.3.3 Creating an LD Program

In the “Demo01” project, we want to create a “LD1” program to show the blinking. To begin, follow these steps:

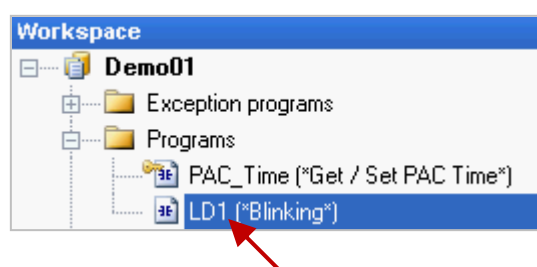
1. In the workspace, mouse right-click the “Programs” folder and select “Insert New Program...”.



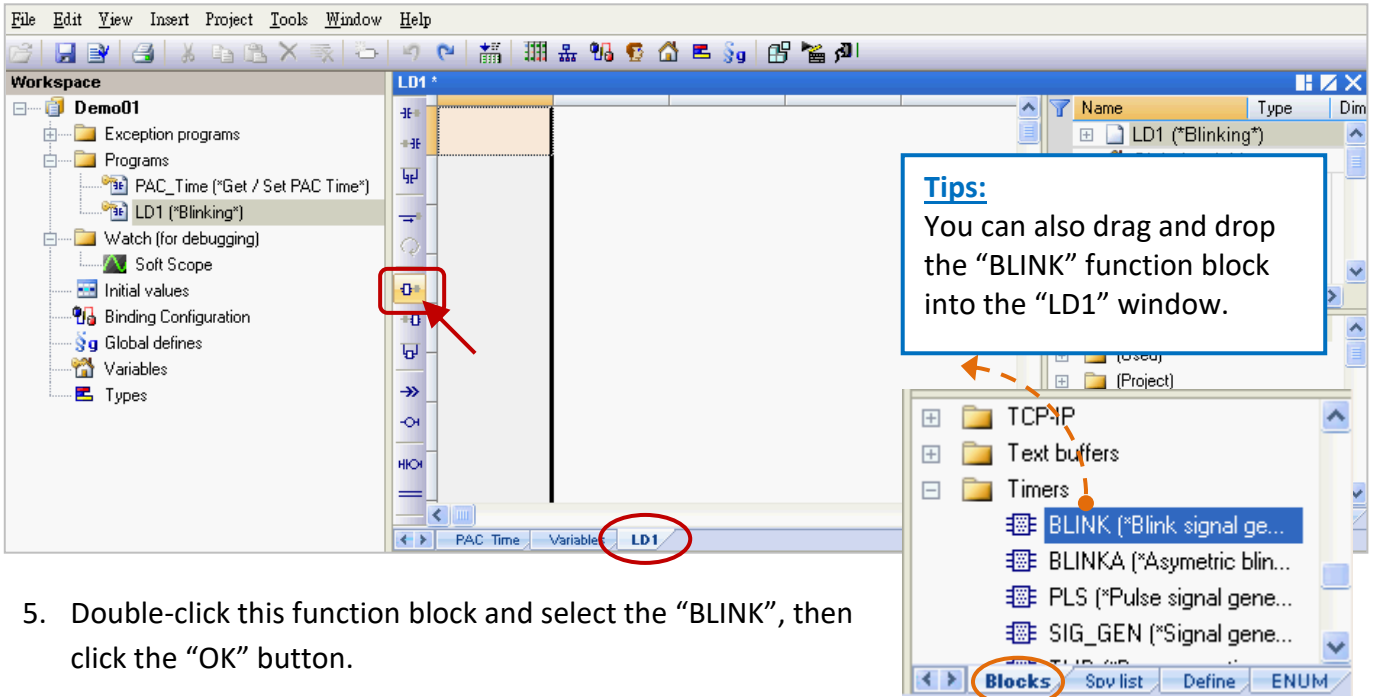
2. Fill in a program name in the “Name” field and enter a simple note in the “Description” field, and then select the “LD – Ladder Diagram” as the programming language and click the “OK” button.



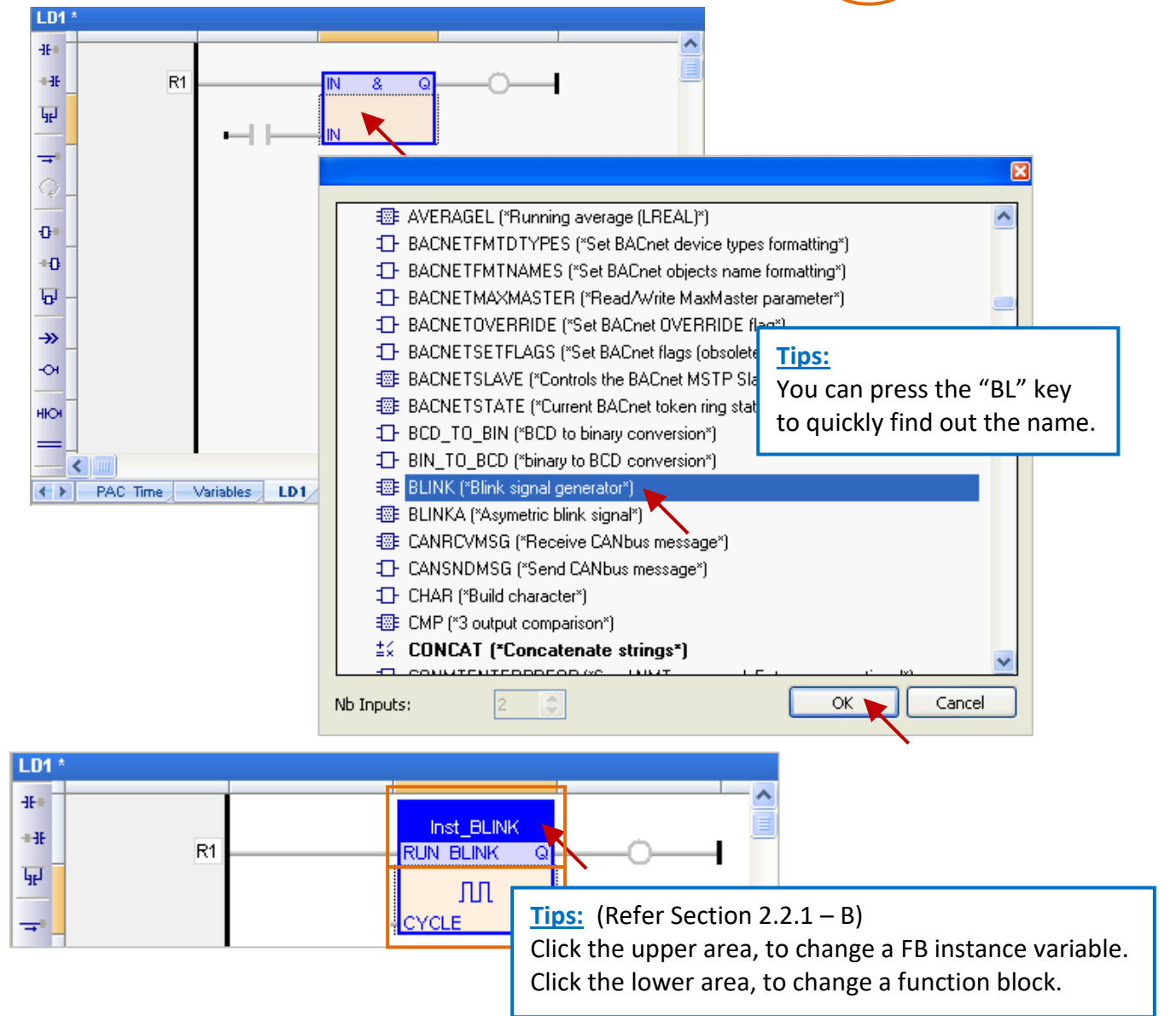
3. Double-click the “LD1” program to open the editor window.



4. Click the “Insert FB..” button on the left of the “LD1” window to add a function block.



5. Double-click this function block and select the “BLINK”, then click the “OK” button.




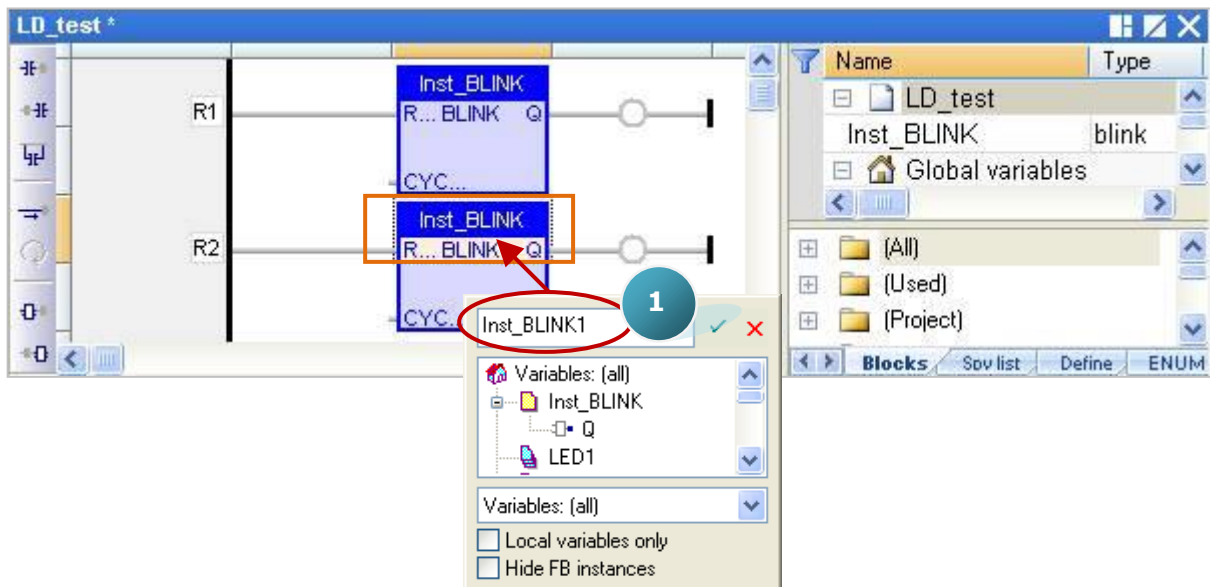




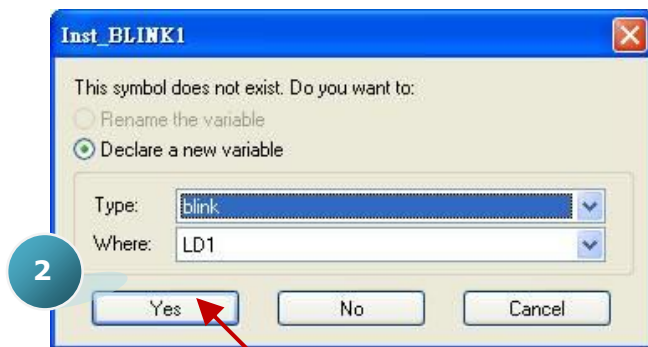
## Important Notice:

When programming, users may copy & paste an existing function block to create a new one. But, this way will cause a function exception due to the same function instances. Therefore, users must create a new name for the function instance.

1. Mouse double-click the function block and enter a new name (e.g., "Inst\_BLINK1"), then click the  button to complete the setting.



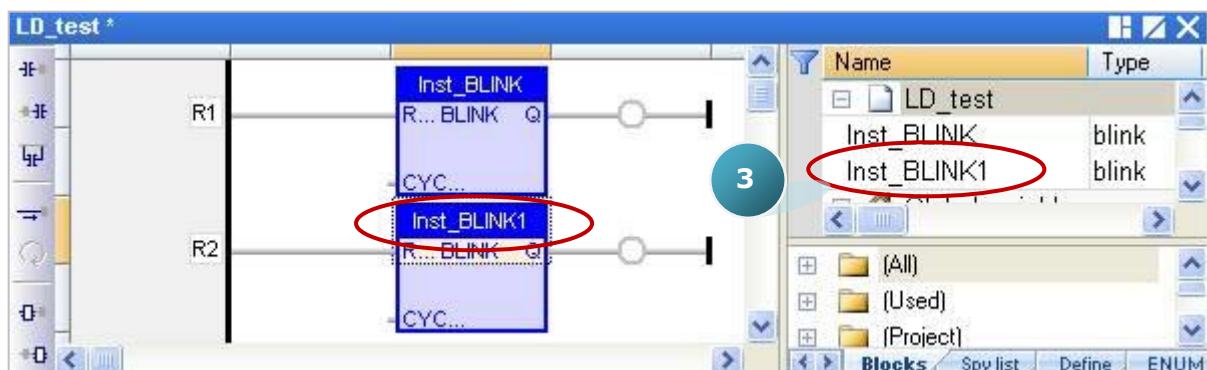
2. In the "Inst\_BLINK1" window, click "Yes" to create this function instance.



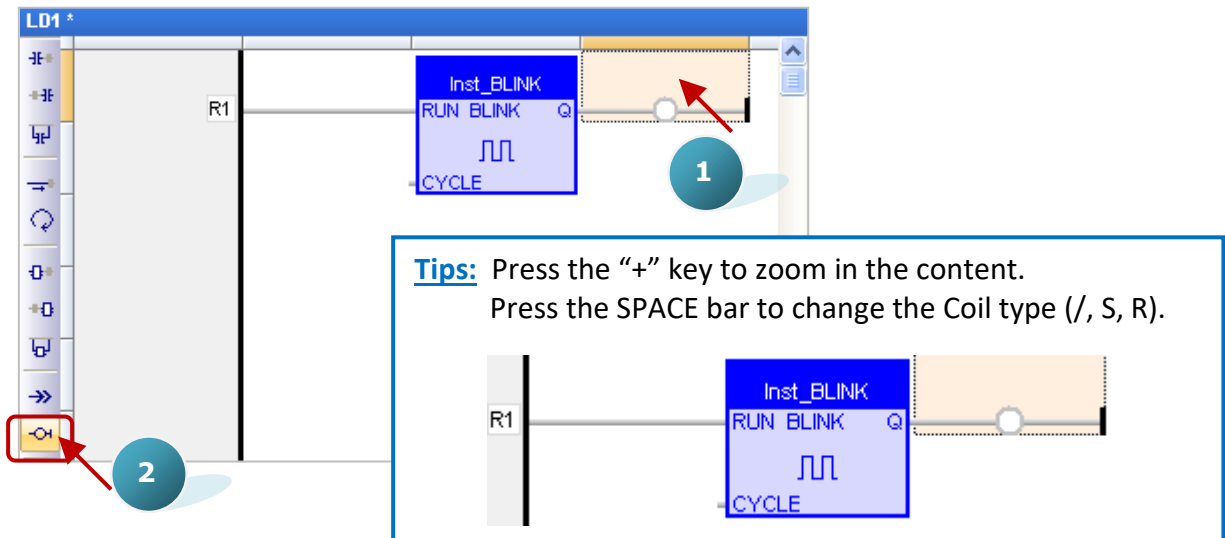
### Tips:

You can also use the same way to double-click on the right-side of the "Coil" to create or assign a variable. (See Step7)

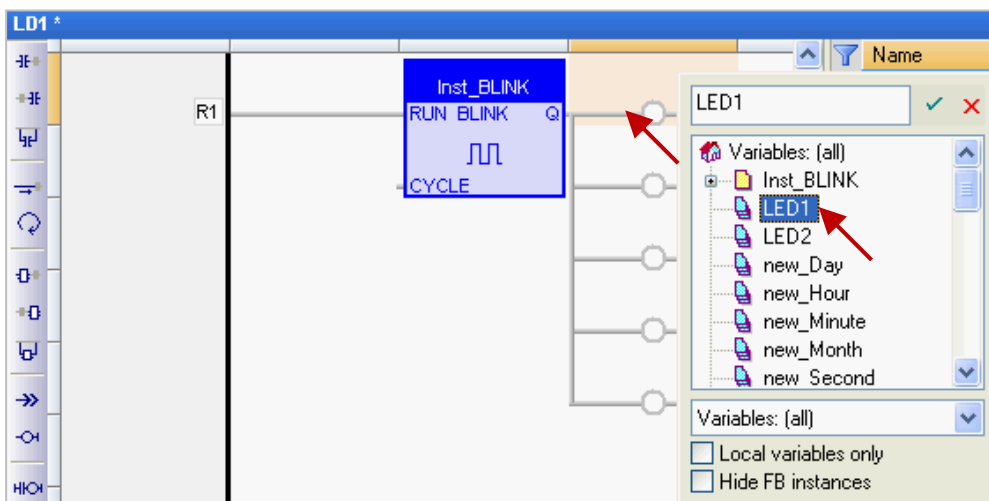
3. Now, there is an "Inst\_BLINK1" function instance added in the Variables Area.



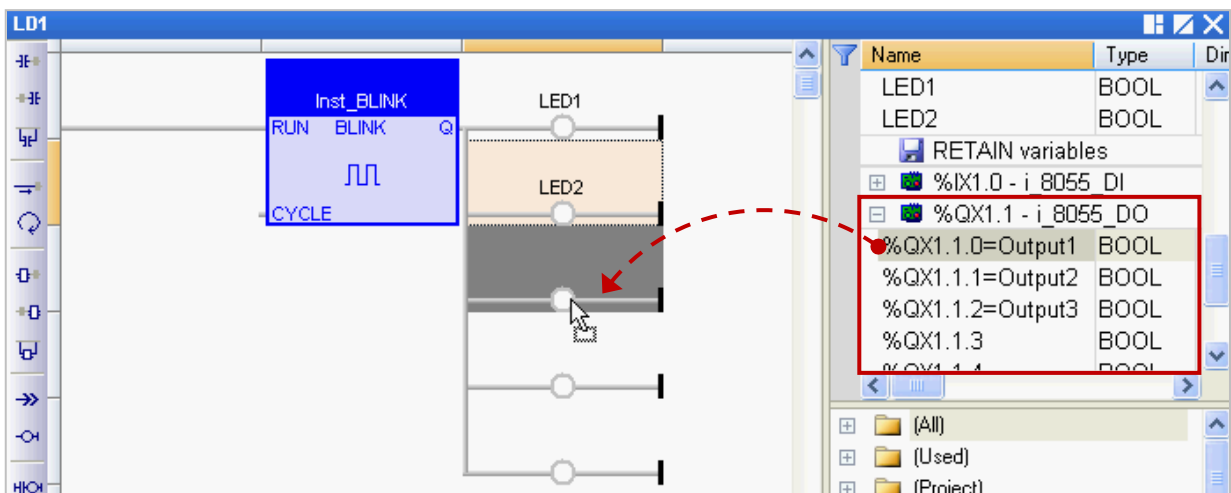
- Click the “Coil” on the right of the “BLINK” function block, and continuously click the “Insert Coil” button to add four “Coil”.




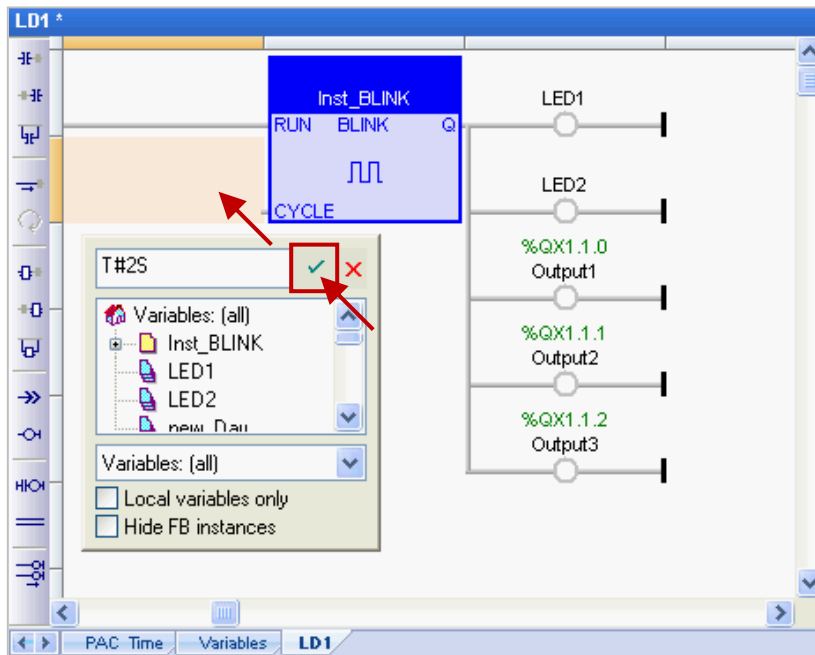
- Mouse double-click the first “Coil” and double-click “LED1” to assign it. Follow the same way to assign the “LED2” variable to the second “Coil”.



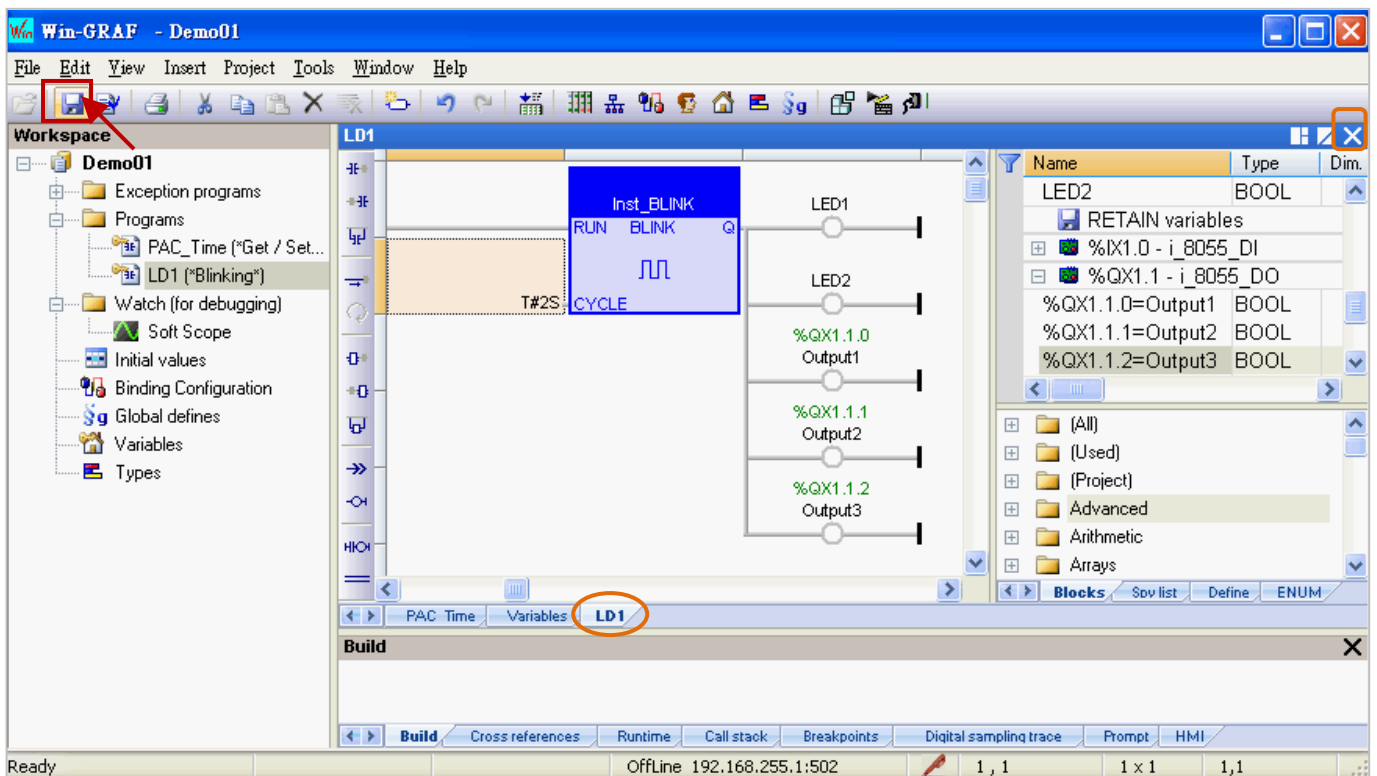
- As the screenshot below, mouse drag-and-drop the “Output1”, “Output2” and “Output3” variables to the 3th, 4th and 5th “Coil”.


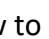


9. Mouse double-click on the left of the “CYCLE” and enter “T#2S” (to blink every two seconds), and then click  to finish the setting.



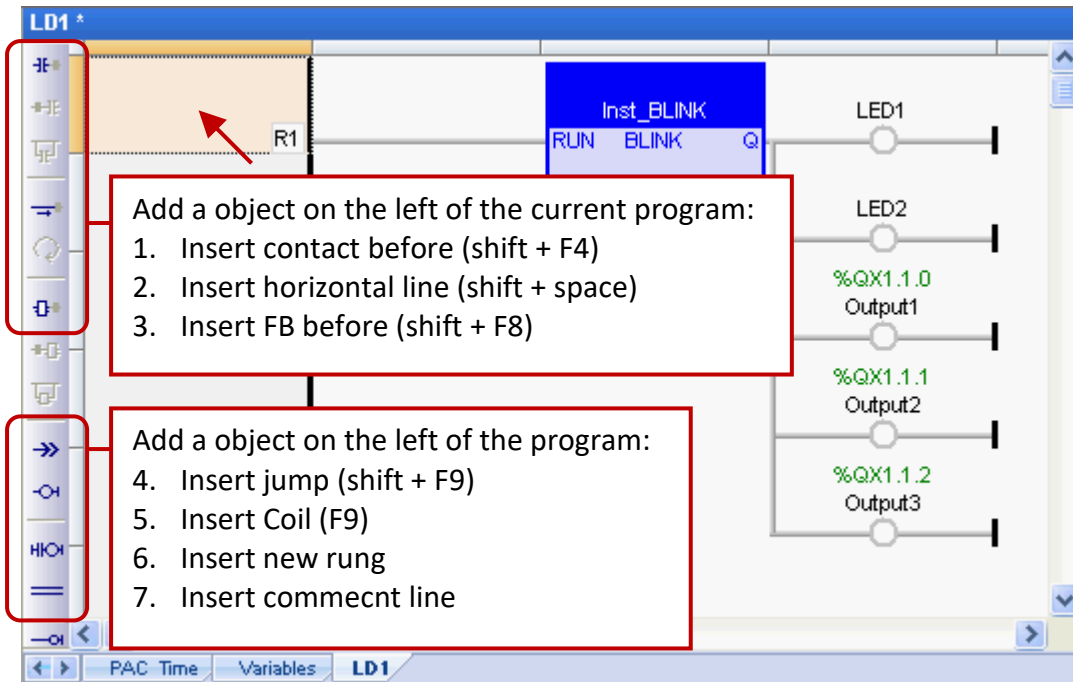
10. Finally, click the “Save” button to save the “LD1” program.



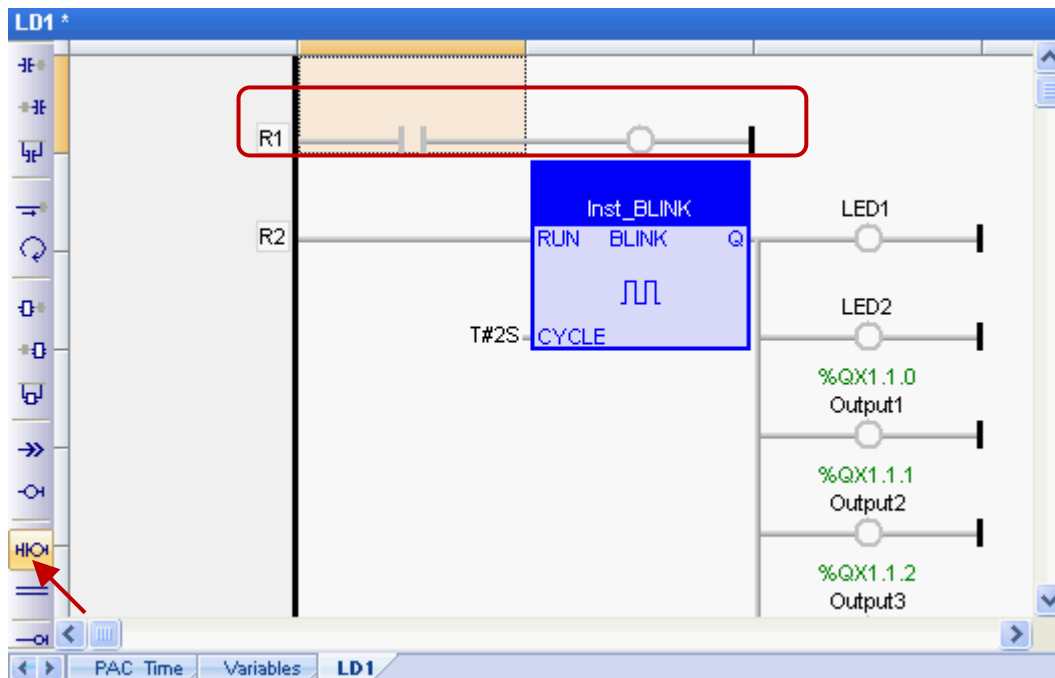
**Note:** “” means this program is opened (locked, cannot be deleted). Click the “X” in upper-right corner of window to close this program (un-locked, “”).

If you want to add a program to the first line after completing the programming, follow these steps:

1. Click the upper-left corner of the Program Editor Area, and you will see the selectable items on the Object bar. Select an object (4 to 7, as the screenshot below) to add a program to the first line.  
Note: You can also select an object (1 to 3) to add it on the left of the current program.



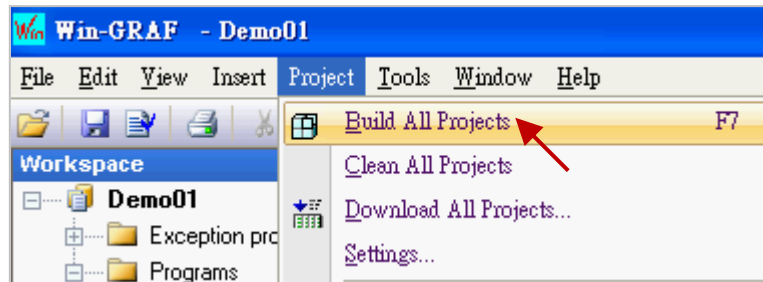
2. In this case, click "Insert new rung" to add it to the first line.



### 2.3.4 Compiling the Program

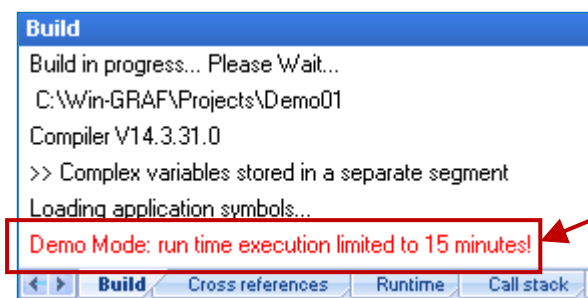
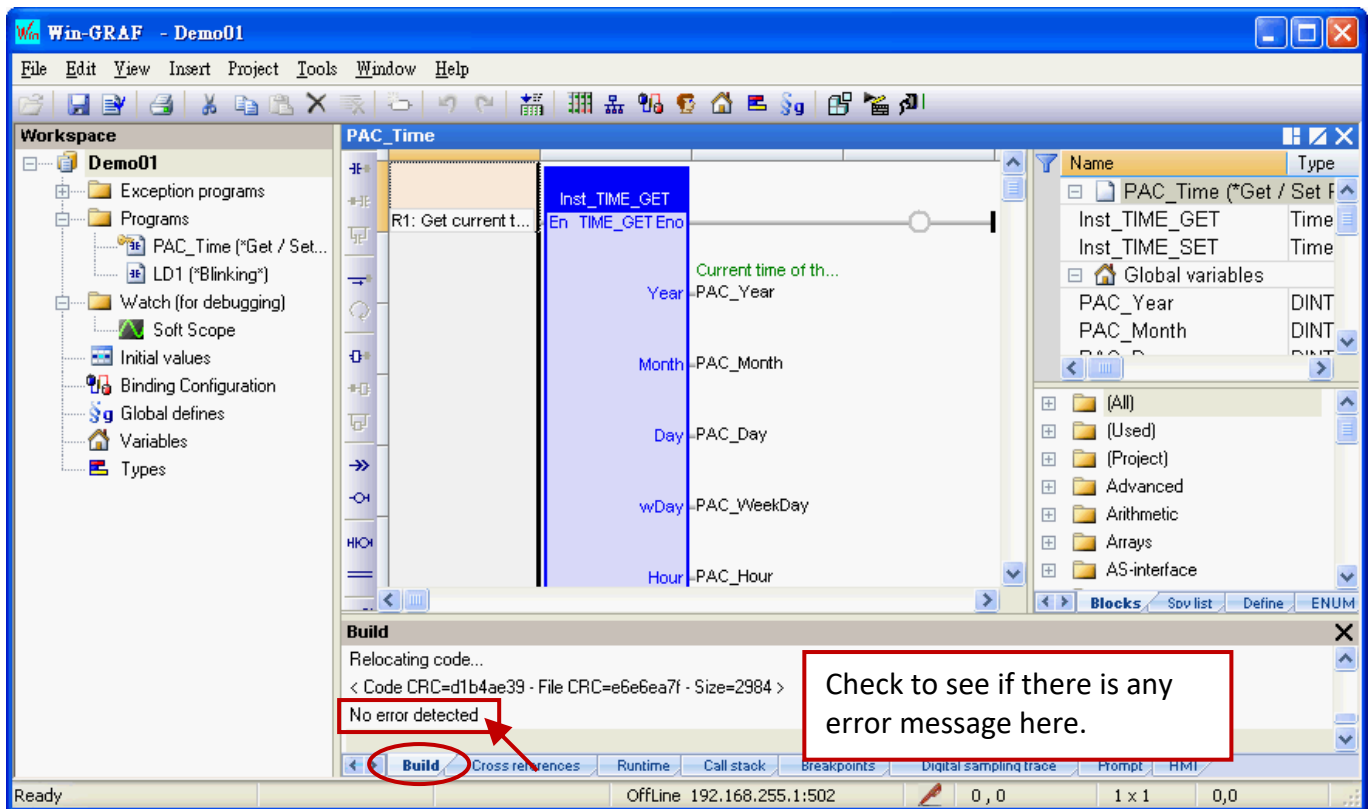
In the previous section, we have added and saved the LD program. For the Win-GRAF project can function properly in the PAC, we need to compile the programs. To begin, follow these steps:

1. On the menu bar, click “Project > Build All Projects” to compile all programs.



2. If a “No error detected” message is appear that means the project was successfully compiled.

**Note:** If you modify and save the program after compiling it, click the “Clean All Projects” to clean the previous results and then do the step1 again.

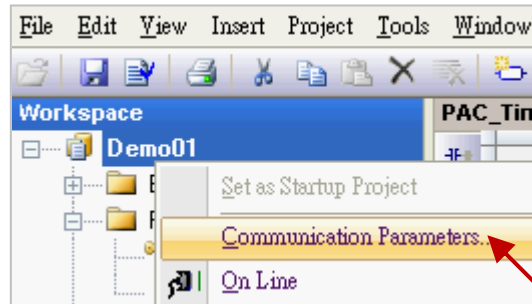


If the Win-GRAF is running in Demo Mode, this message means the Win-GRAF project can run for up to 15 minutes in the PAC.


### 2.3.5 Download the Program to PAC

Before downloading the program, you need to set up the communication parameters. (By now, it only supports the Ethernet TCP/IP).

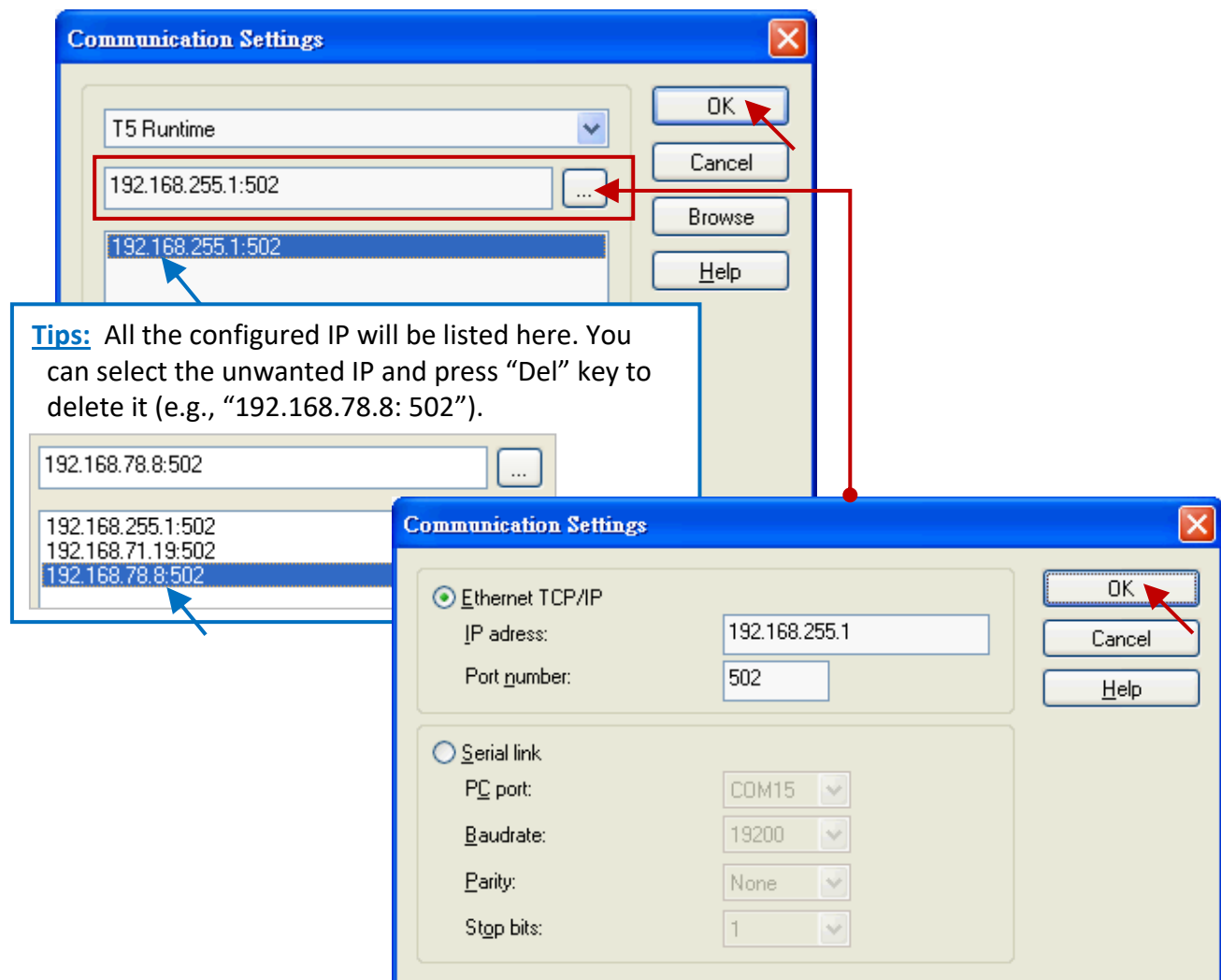
1. Mouse right-click the project name (i.e., "Demo01") and select "Communication Parameters..." to open the settings window.




2. Enter the "PAC IP:502" (e.g., "192.168.255.1:502") to add an IP address and then click "OK".

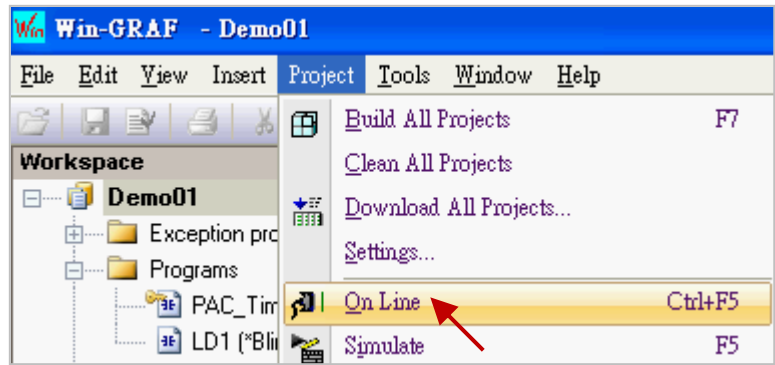
It can also click the  button to add/modify the IP address.

(Note: the default PAC IP is "192.168.255.1" and the fixed port number of Win-GRAF PAC is "502")



3. Before establishing a connection, make sure the PAC and the network are working properly.

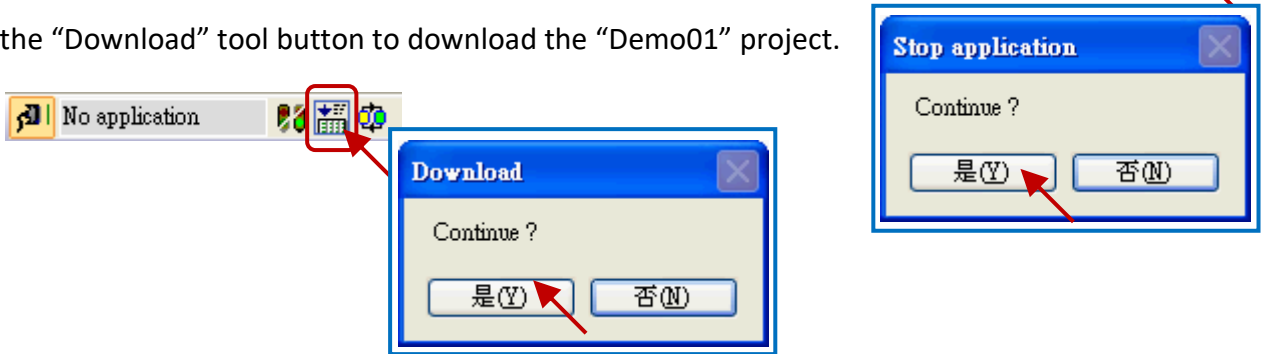
- Click the menu bar "Project" and select "On Line", or click the  tool button to establish a connection.



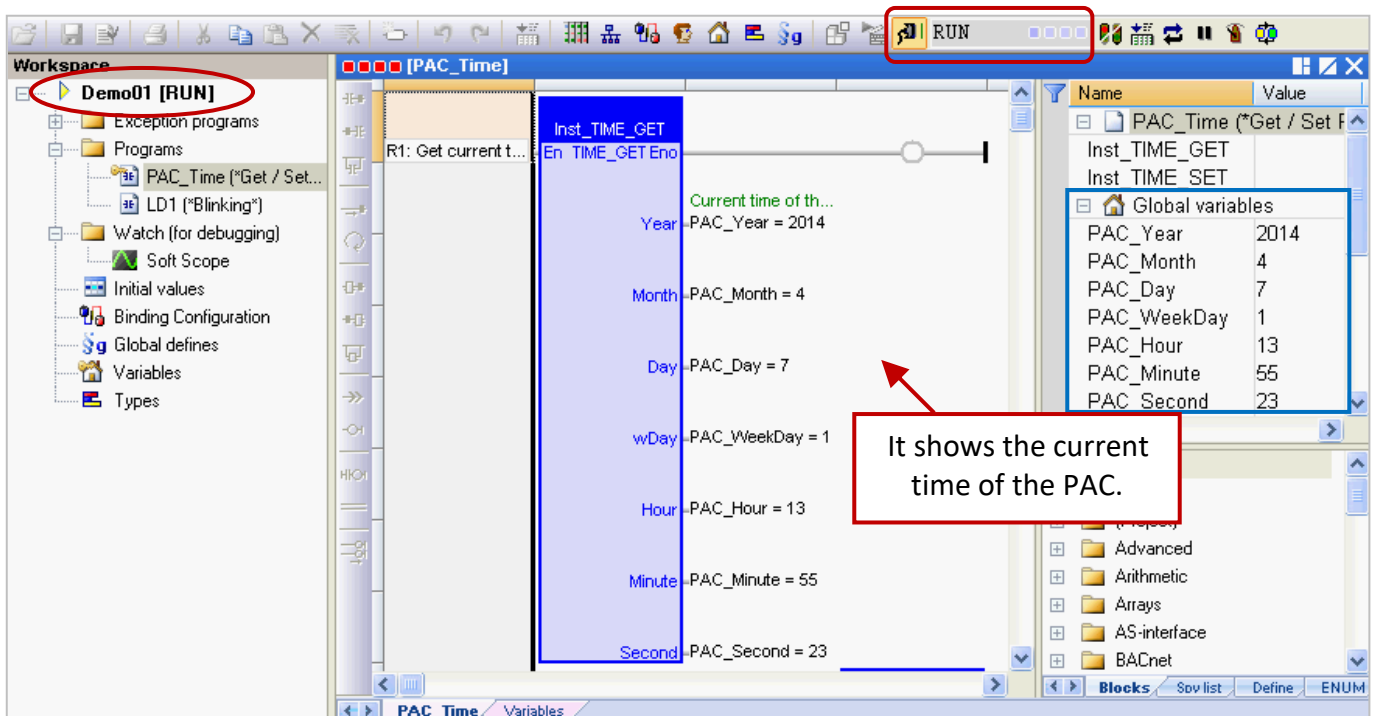
- As the screenshot, if it shows "App: TEST", different to the current project name (i.e., "Demo01"), that means there is a project (name: "TEST") running in the PAC. Click "Stop application" tool button to stop the "TEST" project.



- Click the "Download" tool button to download the "Demo01" project.



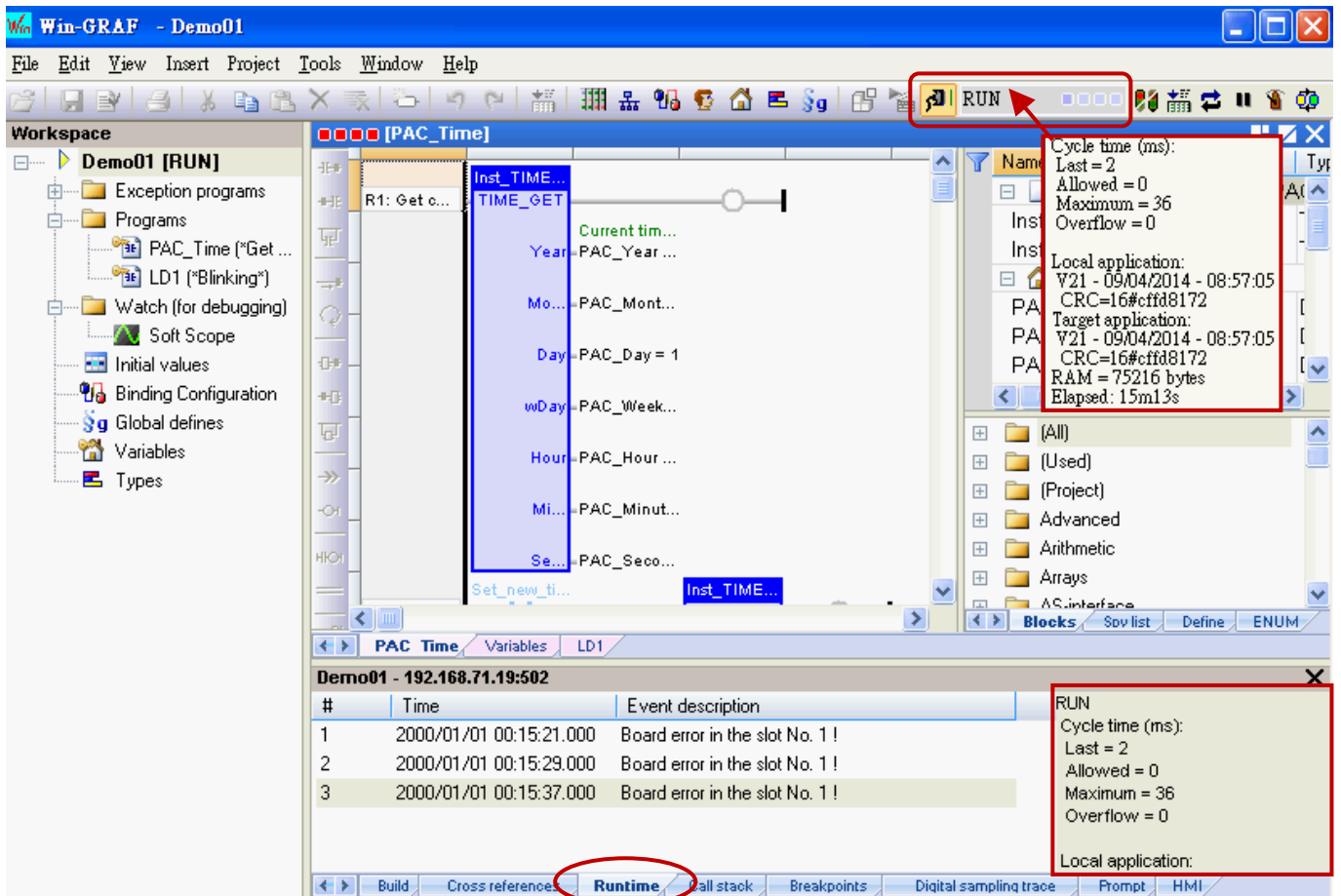
- If it shows "RUN" that means the "Demo01" project is successfully running in the PAC.

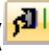



**Note:** If there is any error message show up during the download process, refer [Appendix B](#) to get the solution.

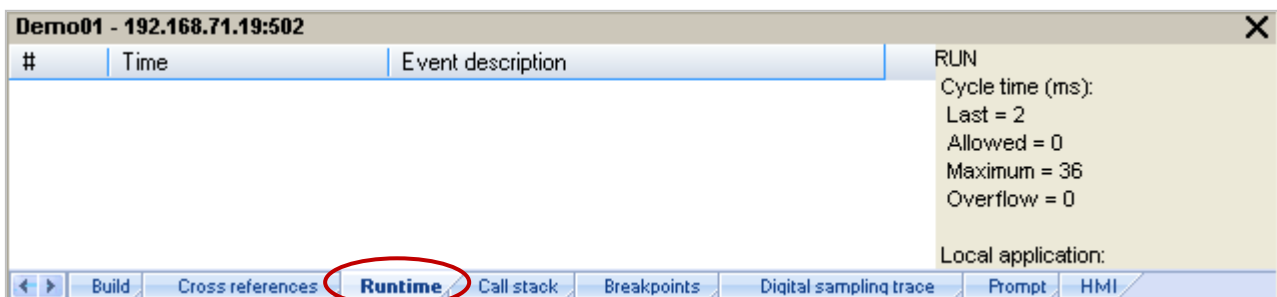
### Cycle time

When on-line with the PAC, move your mouse over the “RUN” position on the toolbar to view the current cycle time of the program in the PAC. You can also view the cycle time in the bottom-right corner of the message area.



When doing the “On Line” (  ) operation, it will automatically switch to the “Runtime” tab and you can see if there is any error message for the downloaded program. (E.g., in this example, we need to plug the I-8055W module in the Slot1 of the PAC, and the message “Board error in the slot No. 1 !” means there is no I/O module in the Slot1 or an I/O exception.)

**Shutting down the PAC,** and plug one I-8055W module in the PAC’s Slot1 then reboots. Then, click “On Line” (  ) button to connect to the PAC.



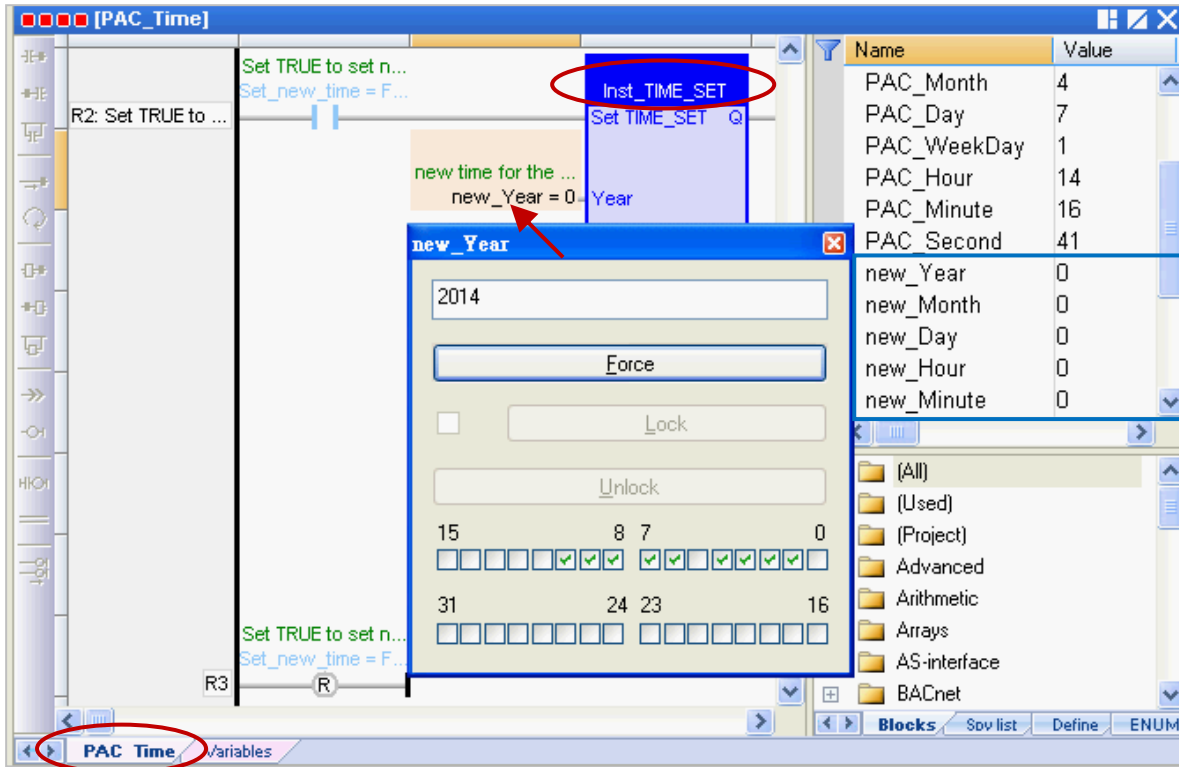


### 2.3.6 Testing the Program

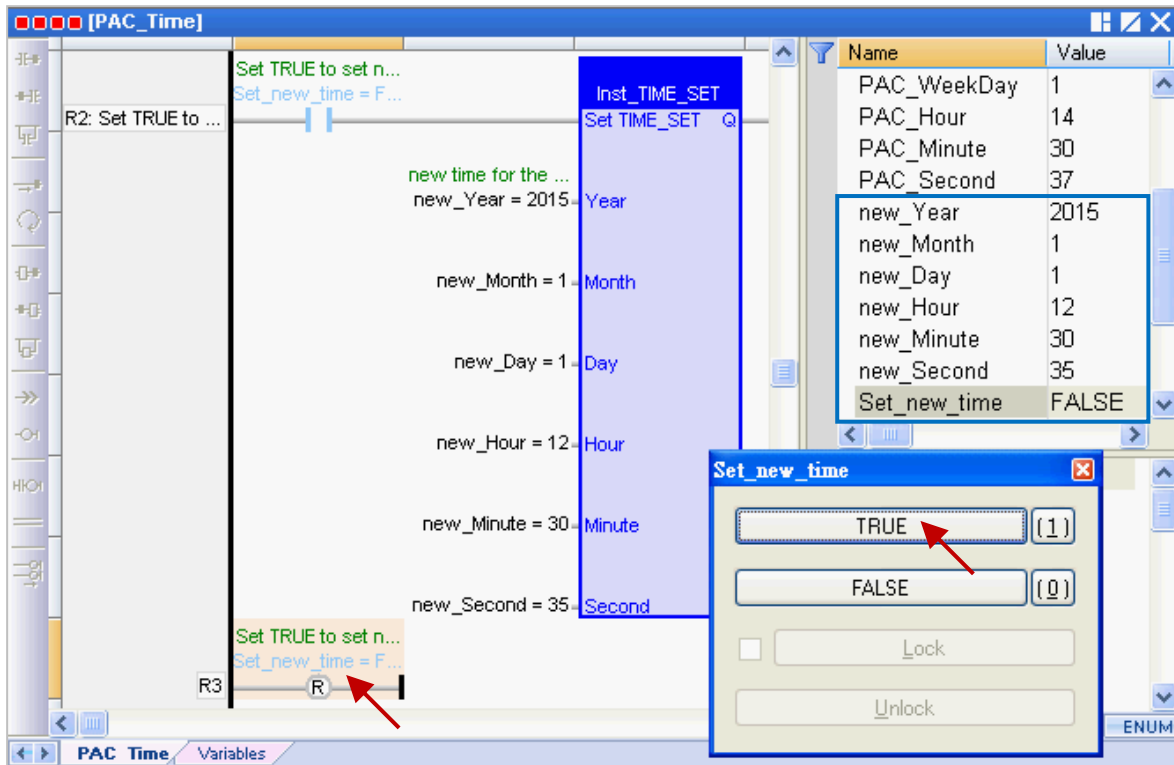
In the previous section, you have successfully downloaded the “Demo01” project and the following will describe how to test the program.

#### The “PAC\_Time” Program:

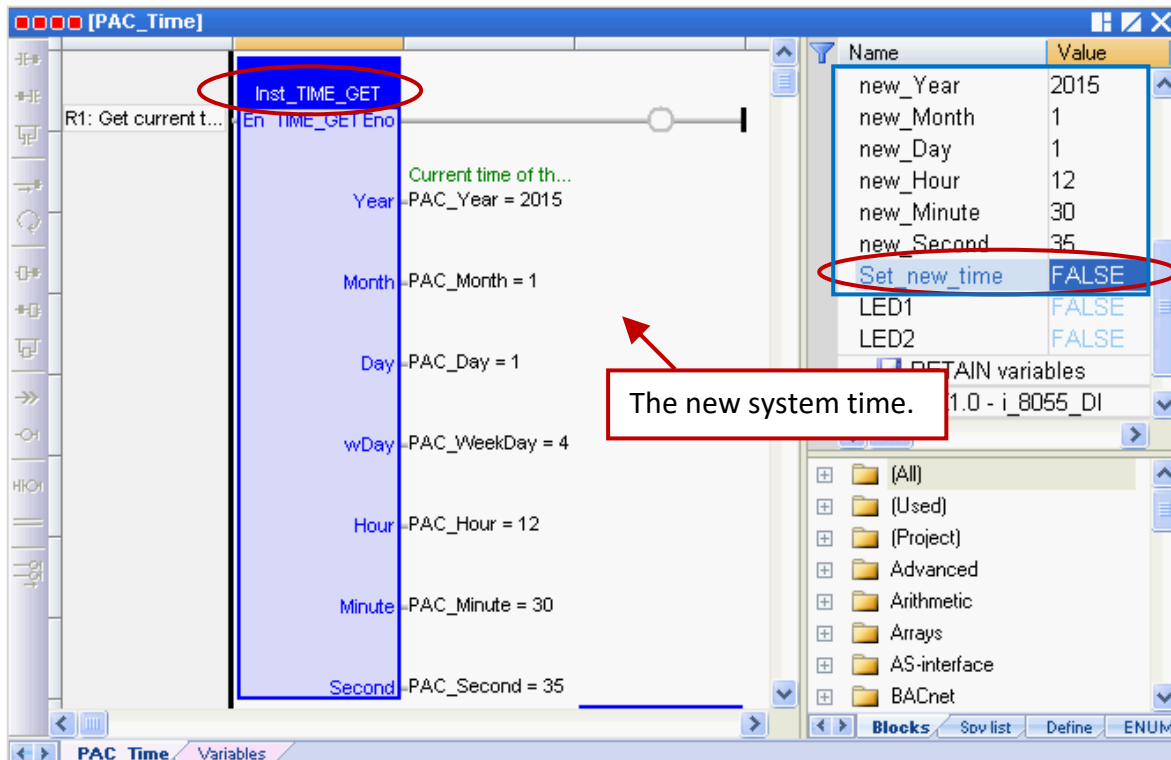
1. Mouse double-click the variable name (e.g., “new\_Year”) in the “TIME\_SET” function block (or the Variables Area) one-by-one to change the PAC’s system time (e.g., to change it as January 1, 2015 12:30:35).



2. Set the “Set\_new\_time” variable to “TRUE” to write the new system time.

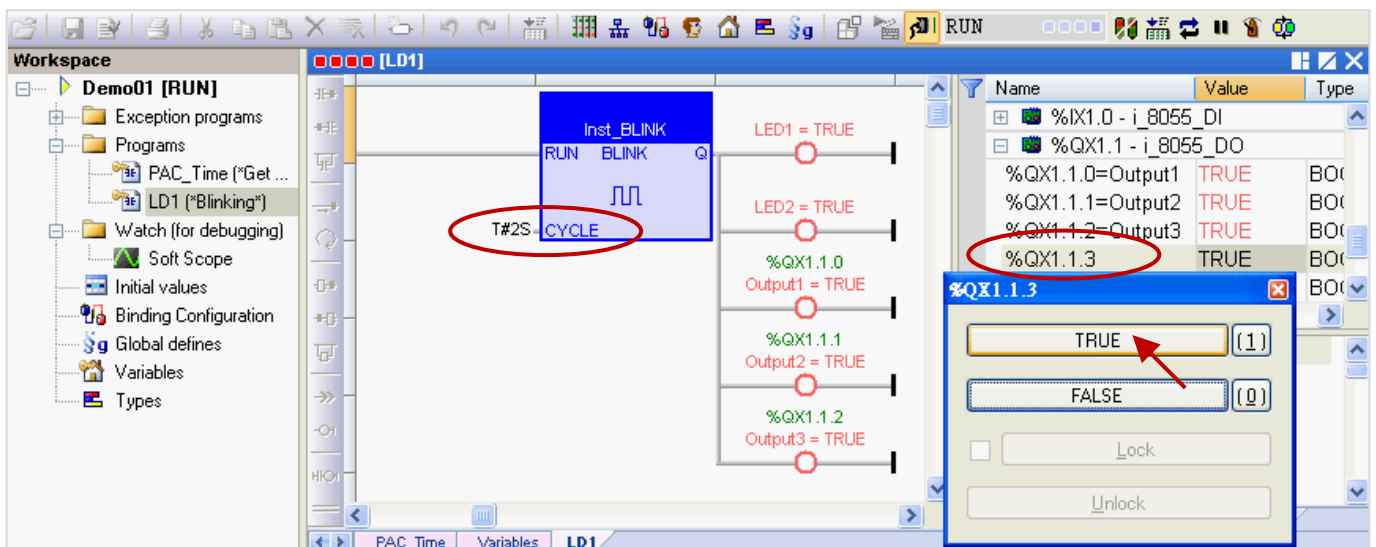


- Then, the new system time will show on the “TIME\_GET” function block (or the Variables Area), and the “Set\_new\_time” variable will be reset to “FALSE” automatically.



#### The “LD1” program:

- When the “Demo01” project is running, you can check to see if the DO0, DO1 and DO2 tags of the I-8055W I/O module that plugged in the slot1 of the PAC is blinking every two seconds (like the value “T#2S” we set before). You can also assign a “TIME” variable on the left side of the “CYCLE” for easier to change the time setting. Refer [Section 2.3.1](#) for the setting way.
- If the “%QX1.1.3” variable is set to “TURE” in the Variable Area, the LED4 (i.e., “DO3”, at the top of the I-8055W I/O module) will light up.



- Click the tool button again to cancel the PAC connection.

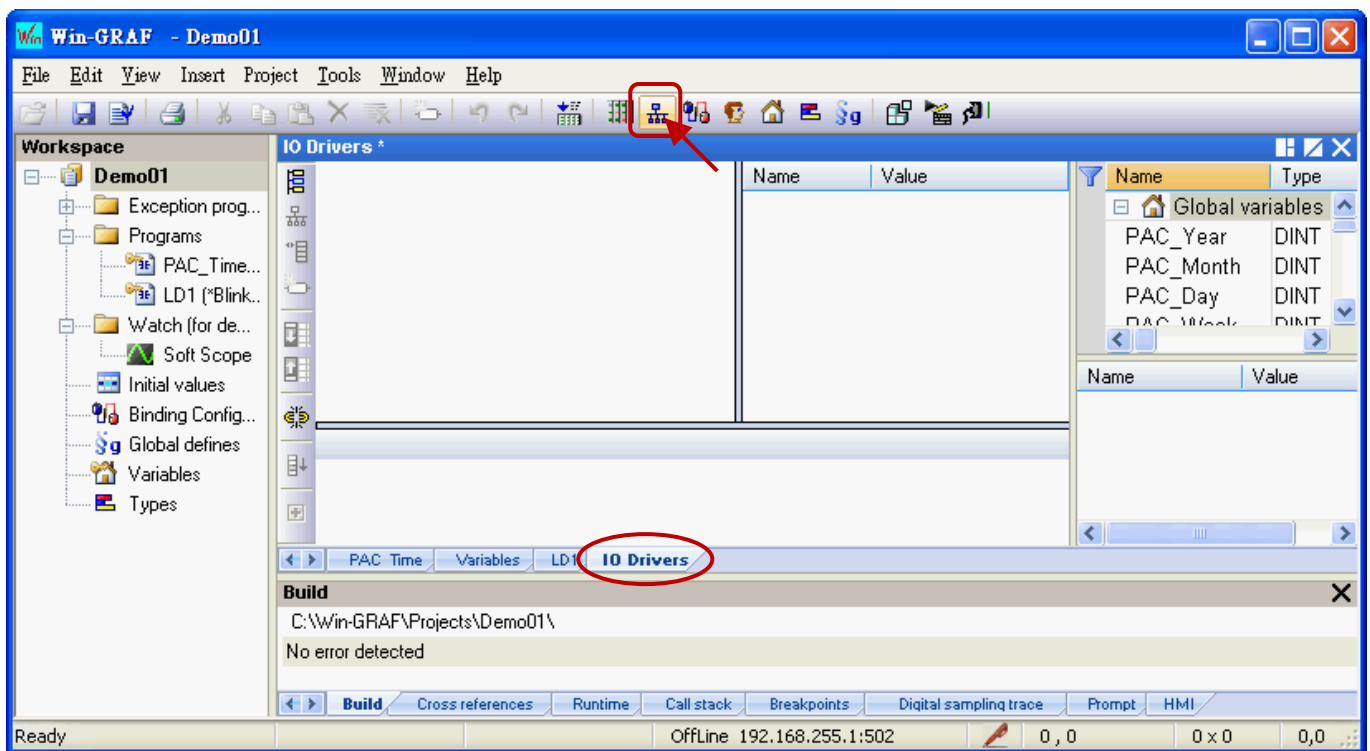
**Note:** Do NOT click the “Stop Application” button; it will stop the running project in the PAC.

## Chapter 3 Modbus Slave: Allowing the SCADA/HMI Software to Access Win-GRAF Variables

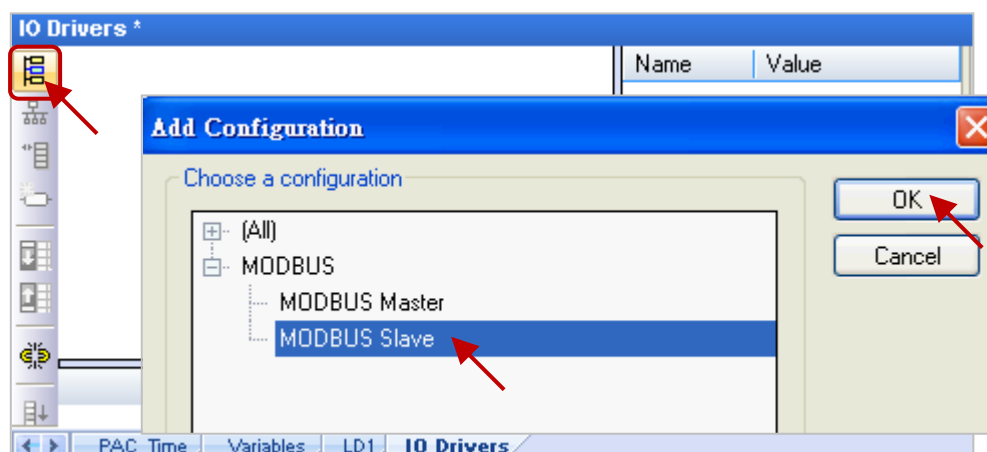
In Chapter 2, we have described how to get/set the PAC system time (i.e., the “PAC\_Time” program) and create a blinking function (i.e., the “LD1” program) in the “Demo01” project. The following sections describe how to allow the SCADA/HMI software (e.g., “[InduSoft](#)”) to access Win-GRAF variables that defined in the "Demo01" project. The Win-GRAF Workbench provides two ways to open the PAC data, one way is to enable the Win-GRAF PAC as a Modbus **TCP** Slave and the second way is to enable the Win-GRAF PAC as a Modbus **RTU** Slave (you must first complete all the Modbus Slave settings in Section 3.1, and then refer [Section 3.2](#)). To begin, follow these steps:

### 3.1 To Enable the Win-GRAF PAC as a Modbus TCP Slave

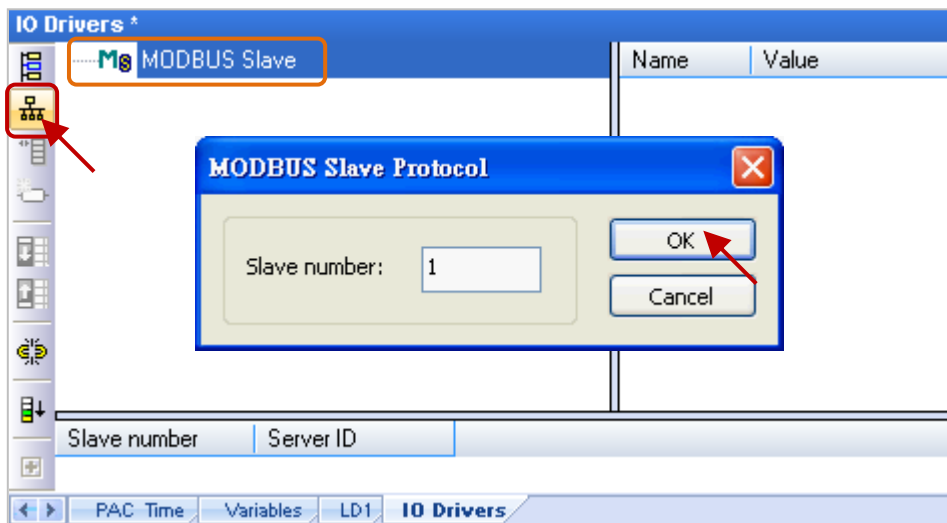
1. Click the “Open Fieldbus Configuration” tool button to open the “I/O Drivers” window.



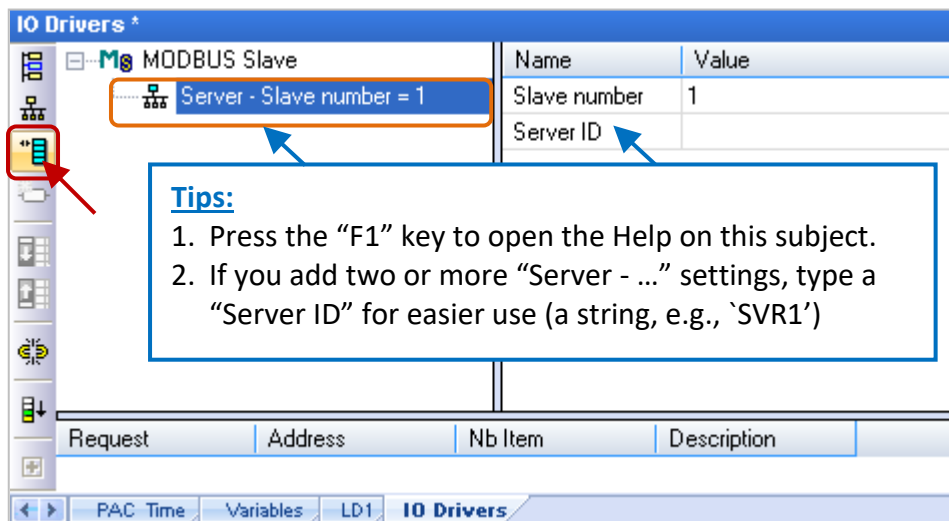
2. Click the “Insert Configuration” button on the left side of the “I/O Drivers” window and then select the “MODBUS Slave” and click “OK” to enable a Modbus TCP Slave.



3. Click the “Insert Master/Port” button on the left side to set the “Slave number” (In this case, the value is “1”), and click the “OK” button.



4. Click the “Insert Slave/Data Block” button on the left side to open the “MODBUS Slave Request” window.



5. Enter a simple note in the “Description” field and then click the “Input Registers” option.

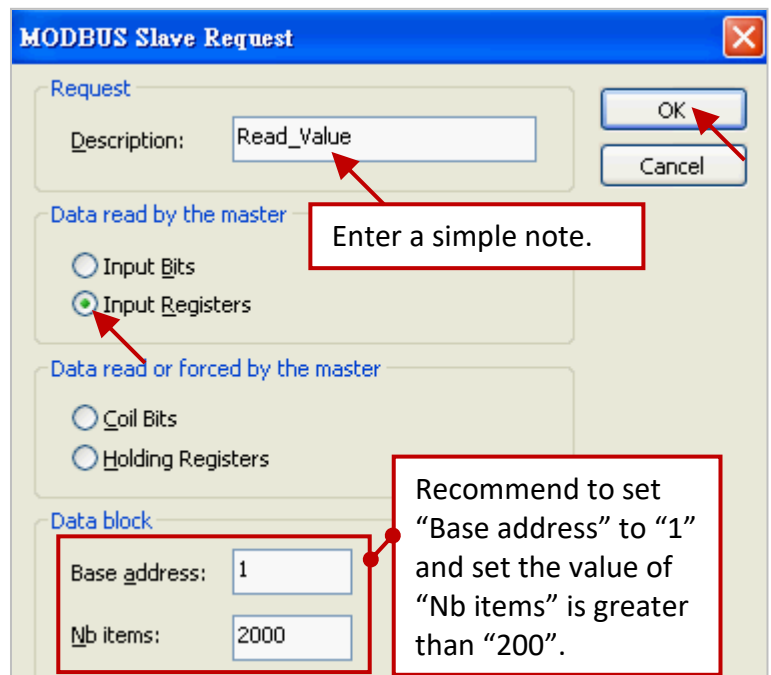
**For Modbus Master to Read data:**

Options	Data Types
Input Bits	BOOL
<b>Input Registers</b>	BYTE, INT, DINT, REAL, etc.

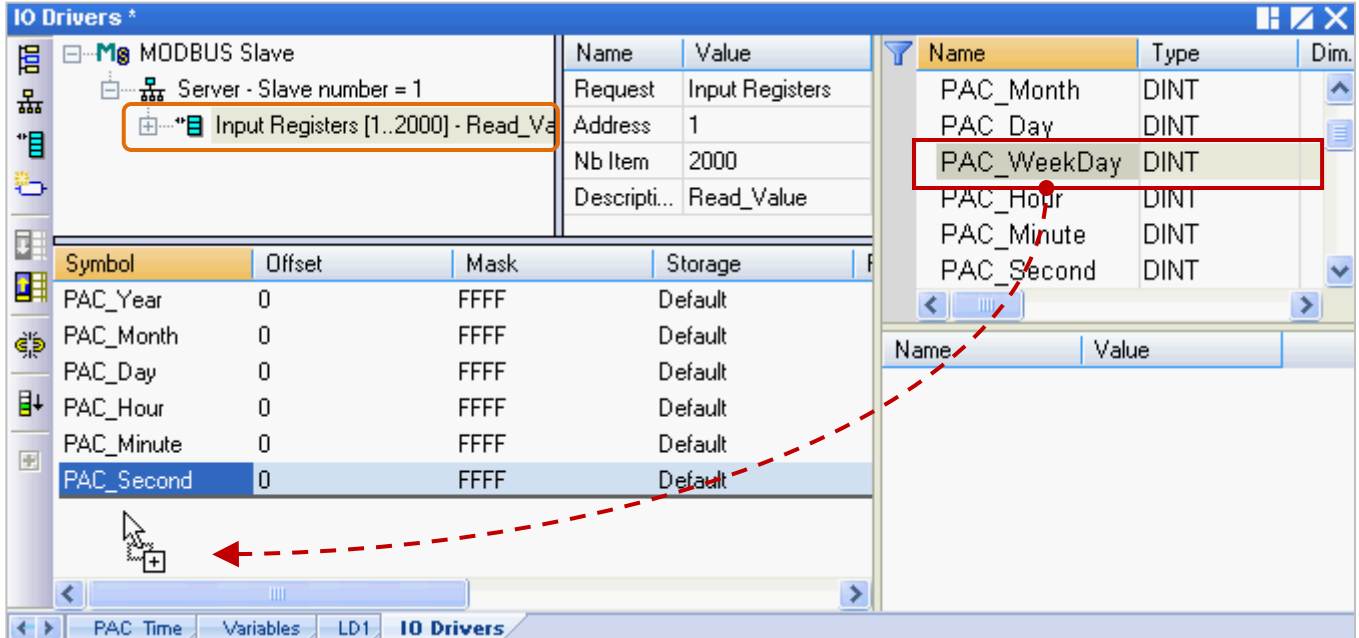
**For Modbus Master to Write data:**

Options	Data Types
Coil Bits	BOOL
Holding Registers	BYTE, INT, DINT, REAL, etc.

(Refer [Appendix A](#) to see more data type)



- As the screenshot above, it's recommended to set the "Base address" to "1" and the "Nb items" refers to how much variable data can be provided by one "Data block". If the data address requested from the Modbus Master (e.g., the SCADA software) is greater than this value (in this example, the value is "2000"), the Modbus Slave (i.e., Win-GRAF PAC) will not respond.
- Mouse drags all the needed variables (e.g., "PAC\_xxx", data type: "DINT") one-by-one from the Variables area and then drop it to the "Symbol" field.



- Mouse double-click the "Offset" field and fill in a value, then press "Enter" key to finish the setting.

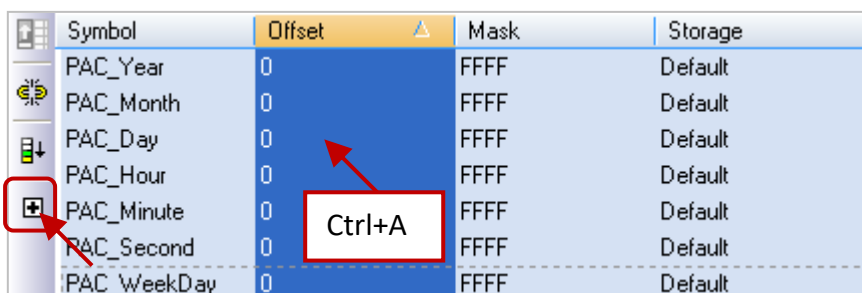
**Note:** (1) The "Offset" value starts at "0" and the Modbus address of variable is equal to this value plus 1 (Base address).  
 (2) If using a 32-bits (or more than 32-bits) data type (e.g., "DINT", refer [Appendix A](#)), it requires two Modbus addresses, as the table below, the "Offset" values are 0, 2, 4, 6, and so on.

Symbol	Offset	Mask	Storage
PAC_Year	0	FFFF	Default
PAC_Month	2	FFFF	Default
PAC_Day	4	FFFF	Default
PAC_Hour	6	FFFF	Default
PAC_Minute	0	FFFF	Default
PAC_Second	0	FFFF	Default
PAC_WeekDay	0	FFFF	Default

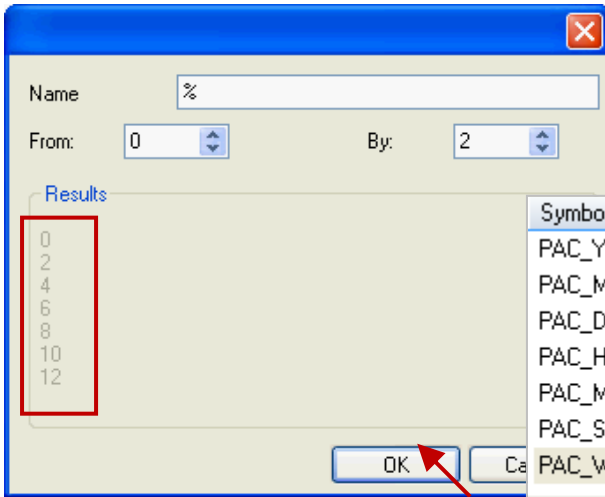
The 'Offset' field for 'PAC\_Minute' is shown with a value of '8' and a red arrow pointing to it. Below the table, a red box contains the text 'Enter' with a red arrow pointing to the 'Offset' column.

**Tips:**

Mouse click the "Offset" field and press the keyboard "Ctrl+A" to select all items, and then click the "Iterate Property" button at the left-side to open the settings window.



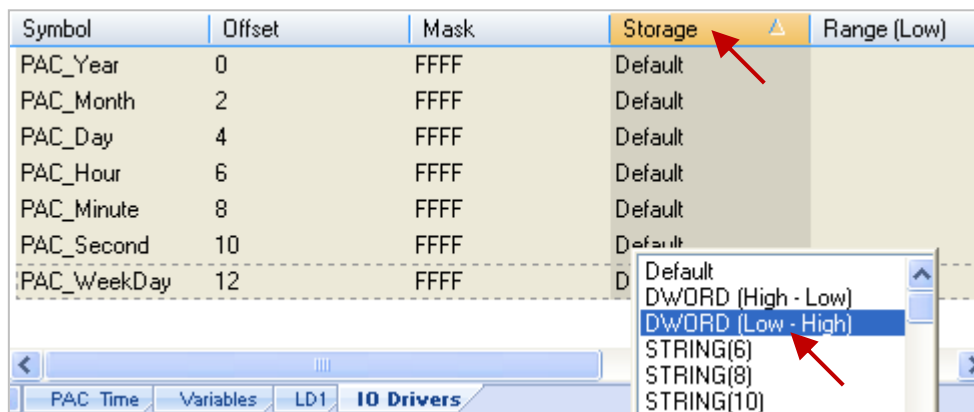
Keep the “Name” setting, enter “0” into “From” field and enter “2” into “By” field, then click “OK”.



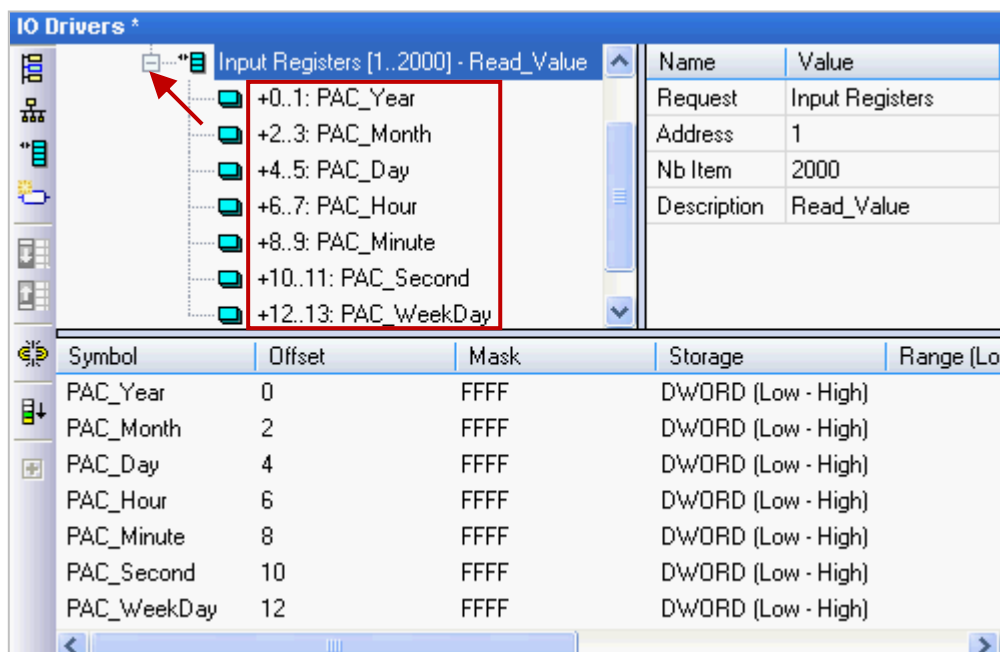
(If the “Name” is set to “%%”, it will show “00, 22, 44, 66, 88, 1010, 1212” in this example. The user can modify it depends on the needed settings and then check the value in the “Results” area.)

Symbol	Offset	Mask	Storage
PAC_Year	0	FFFF	Default
PAC_Month	2	FFFF	Default
PAC_Day	4	FFFF	Default
PAC_Hour	6	FFFF	Default
PAC_Minute	8	FFFF	Default
PAC_Second	10	FFFF	Default
PAC_WeekDay	12	FFFF	Default

- Click “Storage” to select entire columns and then press “Enter” key to display a drop-down menu. Then, select “DWORD (Low – High)” and press “Enter” key to complete the setting. (If using a 16-bits or below, it’s no need to set the “Storage” item.)



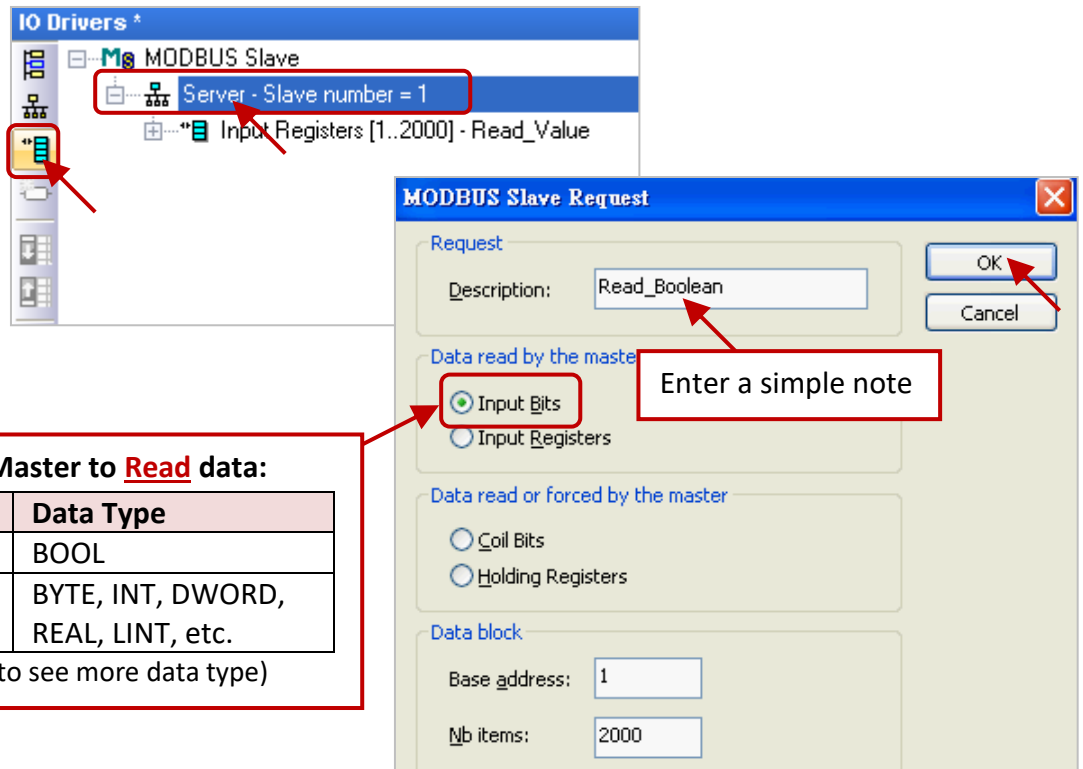
To expand this “Data Block” and you can see the Modbus addresses of all variables. It equals to the “Offset” value plus 1 (Base address).



10. Then, we need to add the second “Data Block” for the Modbus Master to read the Boolean data.

This configure way is similar to the step 4 to 8:

- (1) Click the “Server - ...” item and click the “Insert Slave/Data Block” button at the left side to open the settings window.
- (2) In the “MODBUS Slave Request” window, enter a simple note and select the “Input Bits” option, then set “Base address” to “1” and set “Nb items” to “2000”.

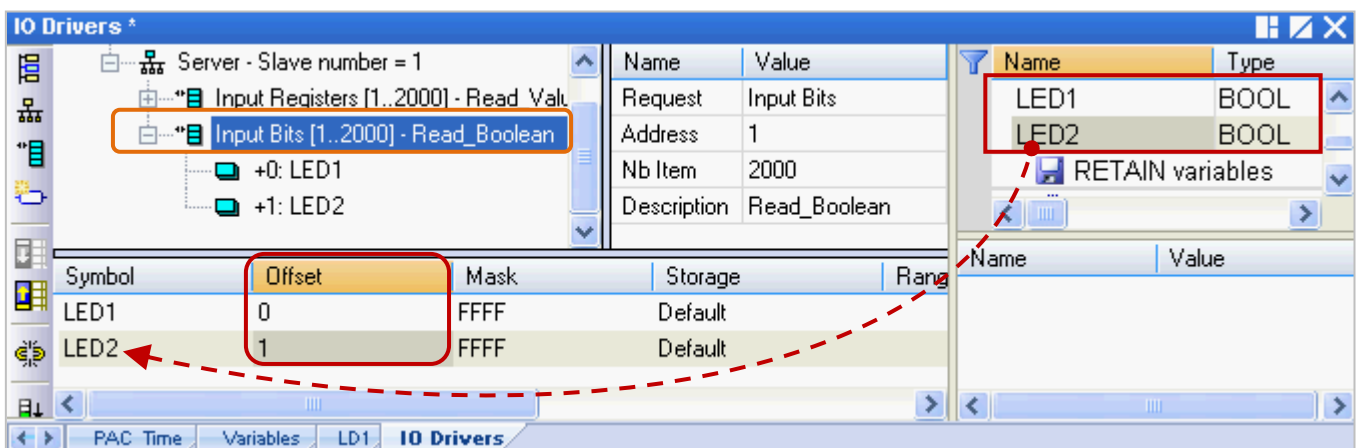


**For the Modbus Master to Read data:**

Option	Data Type
<b>Input Bits</b>	BOOL
Input Registers	BYTE, INT, DWORD, REAL, LINT, etc.

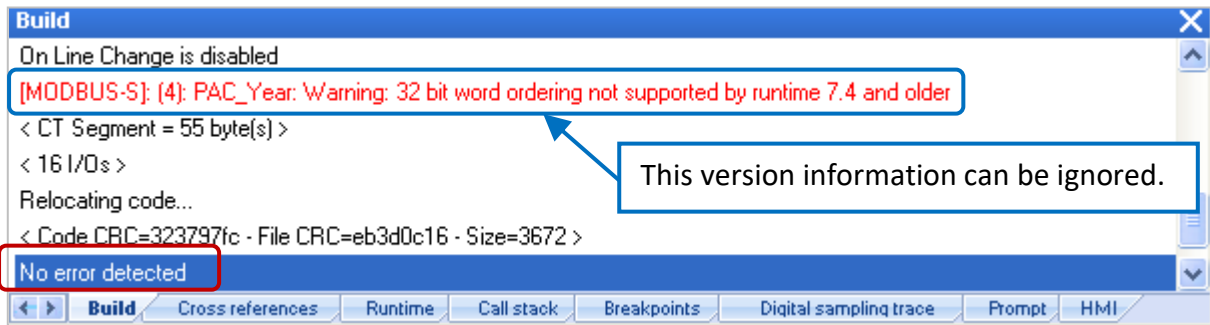
(Refer [Appendix A](#) to see more data type)


- (3) Mouse drags the Boolean variables (i.e., “LED1”, “LED2”; data type: BOOL) one-by-one and drop them to the “Symbol” area, and then set the “Offset” to “0” and to “1”.

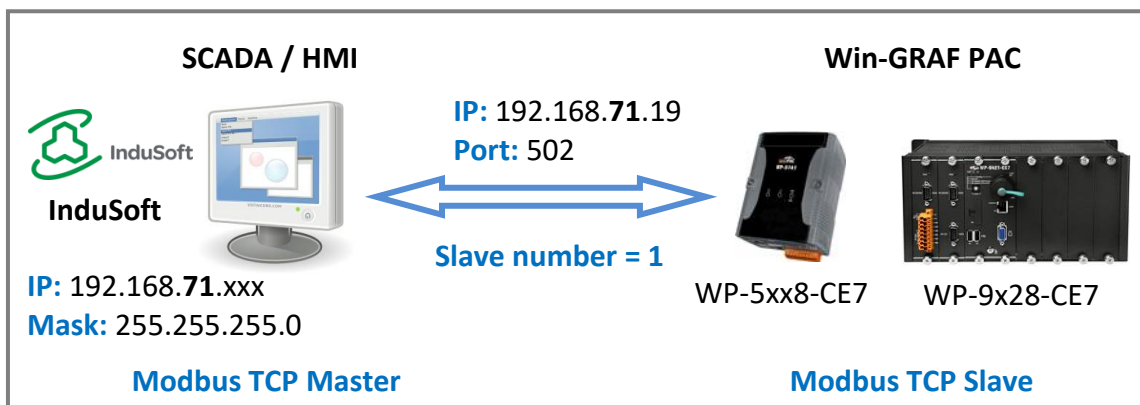
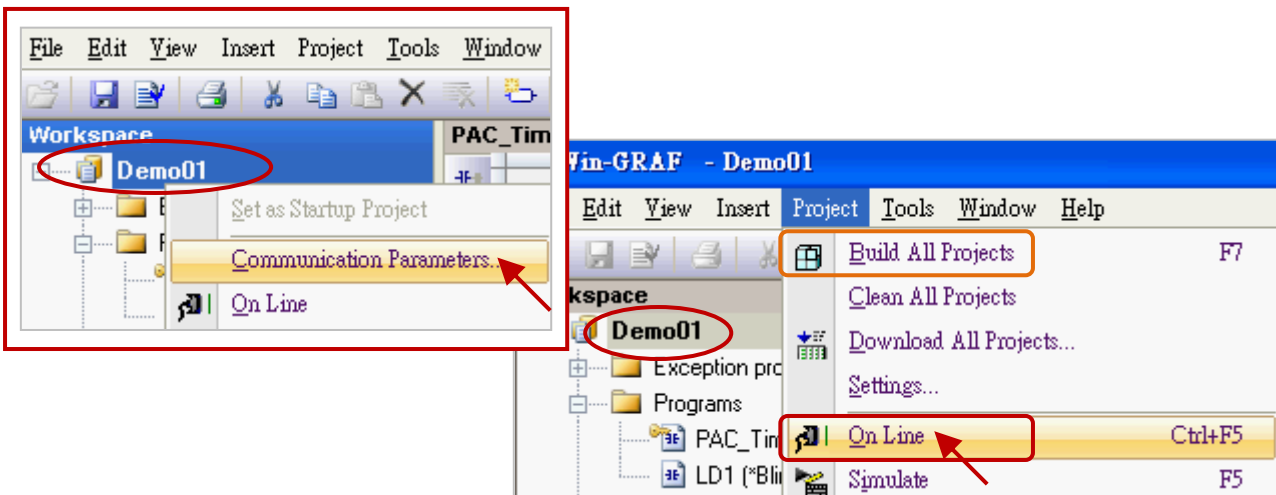


You have completed the settings for the Modbus Slave. Finally, follow the way below to re-compile the program and download it to the Win-GRAF PAC.

11. Click the menu bar “Project” > “Build All Projects” to compile this program again (refer [Section 2.3.4](#)). If a message informs you “No error detected” that means this process is successful.



12. Mouse right-click the project name (i.e., “Demo01”) and select the “Communication Parameters...” to set the PAC IP (e.g., “192.168.71.19:502”) and then click the menu bar “Project” > “On Line” (or ) to establish a connection and download this project to the Win-GRAP PAC. (Refer [Section 2.3.5](#)).



(Refer to [P1](#) to view all PAC models)

After completing all the steps, the HMI/SCADA software can access to all the Win-GRAP variables listed above via Modbus TCP protocol.

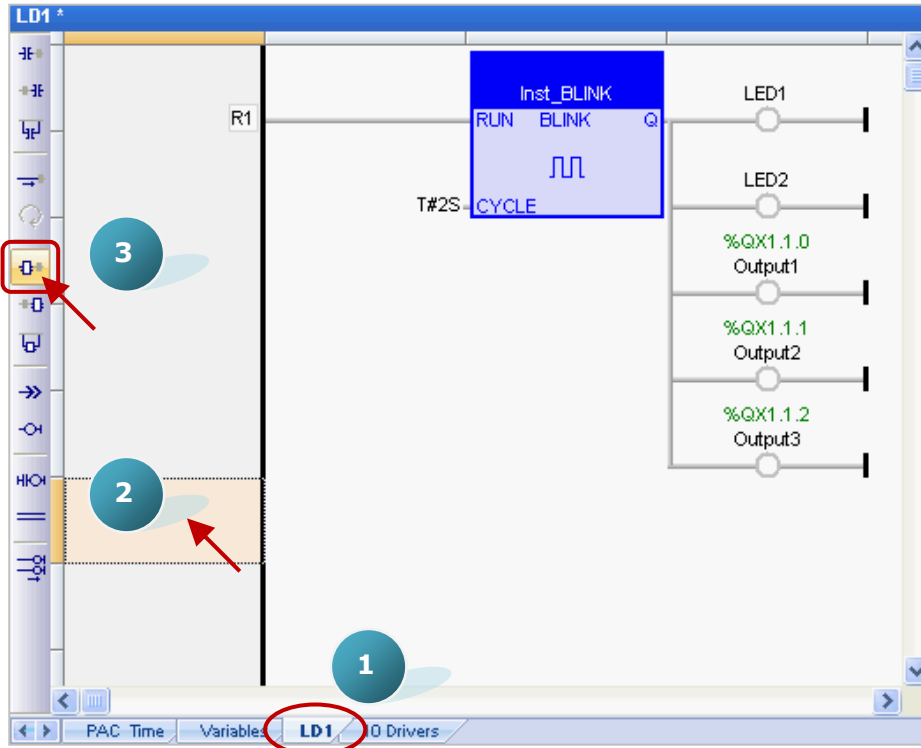


### 3.2 To Enable the Win-GRAF PAC as a Modbus RTU Slave

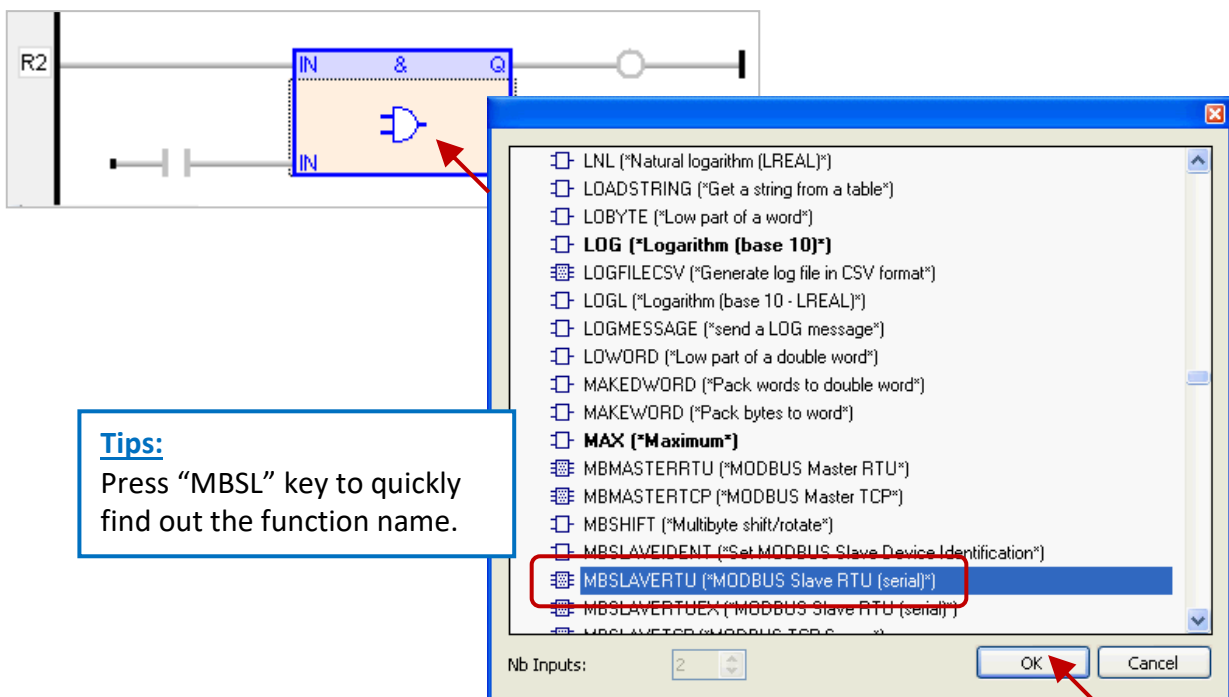
Before doing this, you must complete all the content that described in [Section 3.1](#) to open the Modbus Slave data. The way to enable the Win-GRAF PAC as the Modbus RTU Slave is to add the “MBSLAVERTU” or the “MBSLAVERTUEX” function block in the program. To begin, follow these steps:

#### Add the “MBSLAVERTU” function block

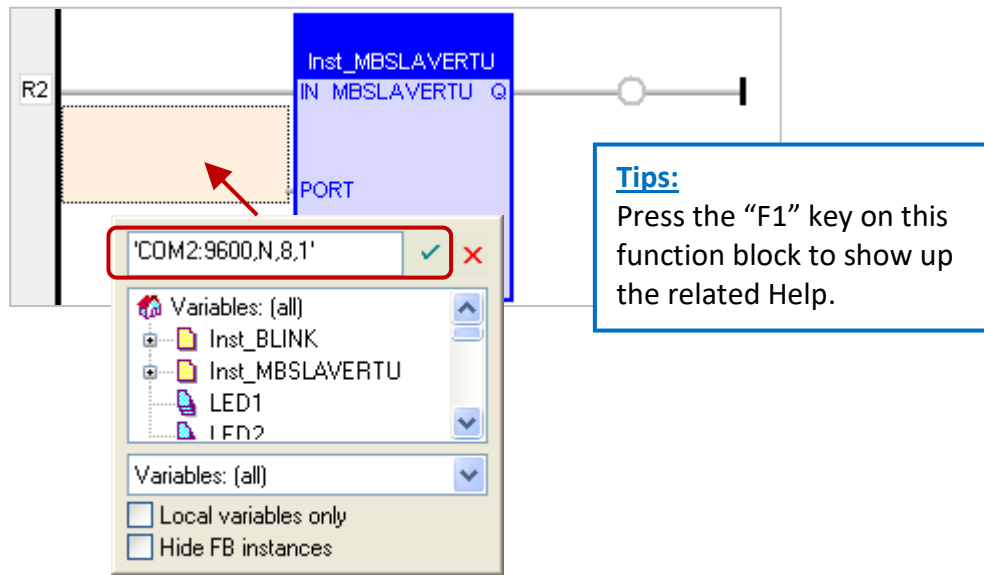
1. In the “LD1” window, mouse click the place where you want to add this function block and then click the “Insert FB..” button on the left side of the window.



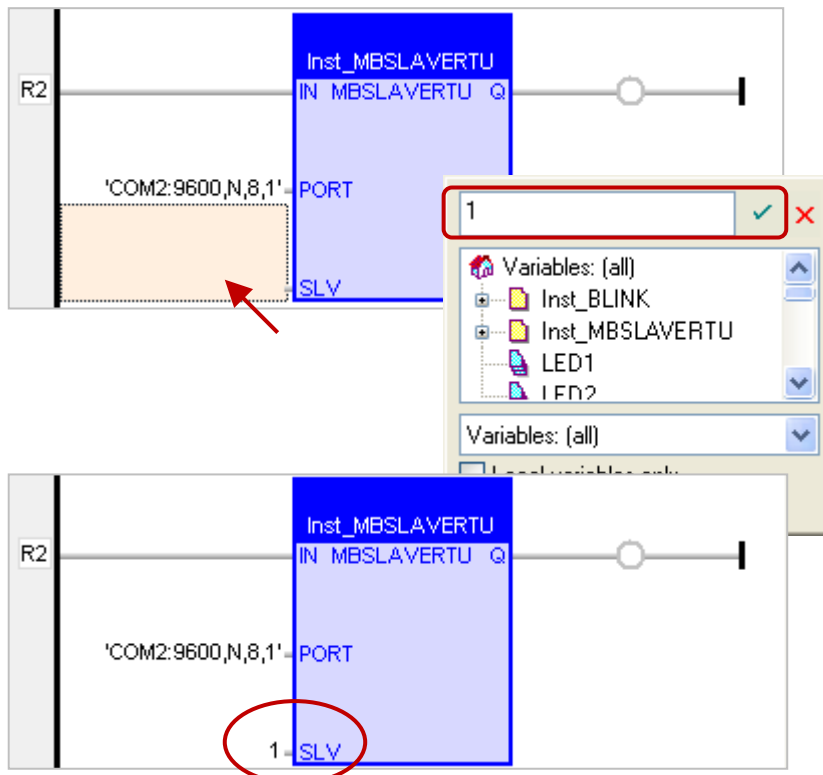
2. Double-click on this function block and select the name “MBSLAVERTU”, then click “OK”.



- In the "MBSLAVERTU" function block, mouse double-click the left side of the "PORT" and enter a string 'COM2:9600,N,8,1' (it means using the Win-GRAF PAC's COM2 to communication with the Modbus Master) and then click  to complete the settings.



- Double-click the left side of the "SLV" and then enter "1" (the value set in the [Section 3.1](#) - Step 3), then click  to finish the setting.



Now, you have completed the setting of the "MBSLAVERTU" function block, then re-compile the program and download it to the Win-GRAF PAC. (Refer [Section 2.3.4](#), [Section 2.3.5](#))

**Note:** Users can enable multiple Modbus RTU Slave in one PAC (recommend not over 16 Ports), the way is to add multiple "MBSLAVERTU" function blocks and set the different "Port" value.

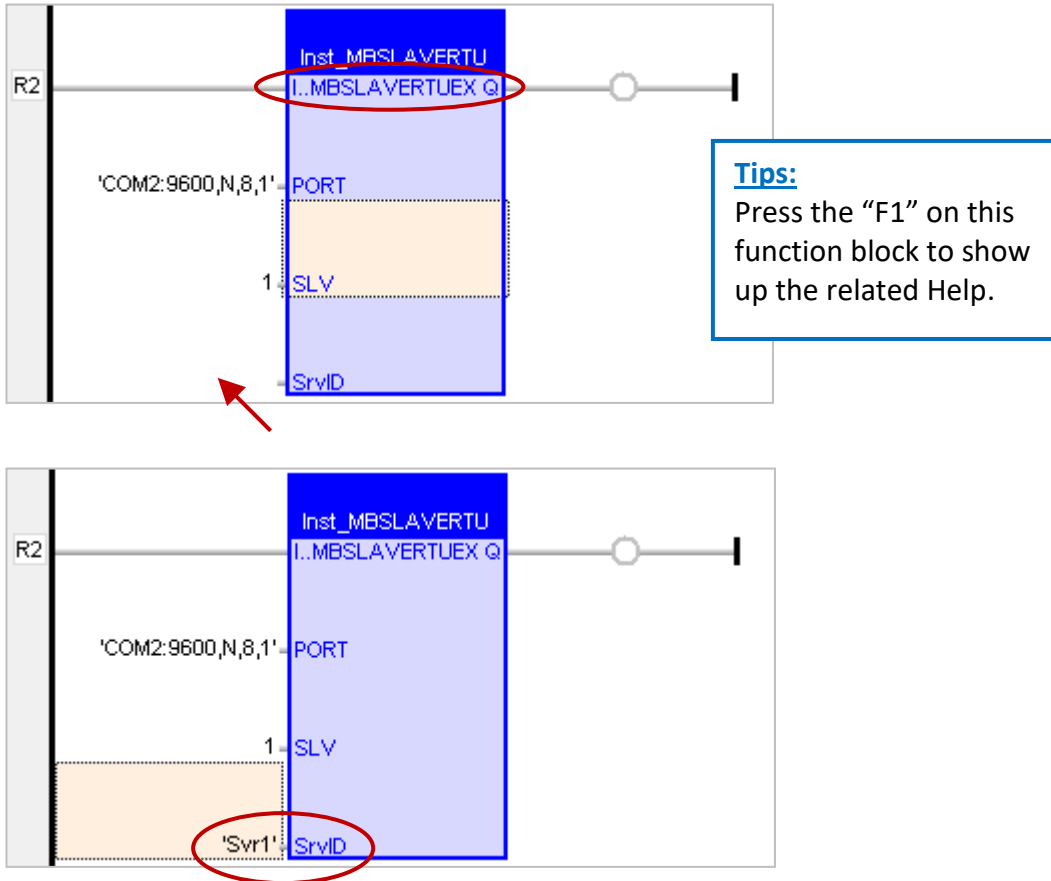


2. The “MBSLAVERTUEX” has a “SrvID” setting. Mouse double-click the left side of the “SrvID” and enter a required “Server ID” (using a string format, e.g., ‘Svr1’).

**Note:**

If using the “MBSLAVERTU” function block, the first Modbus Slave settings will be used.

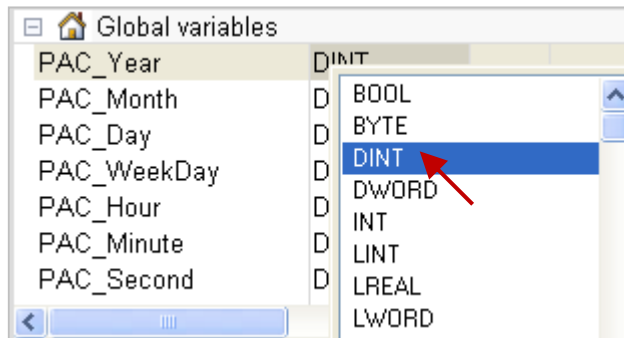
If using the “MBSLAVERTUEX” function block, it depends on the “Server ID” in the Modbus Slave settings.



You have finished the settings for the “MBSLAVERTUEX” function block and then re-compile the program and download it to the Win-GRAP PAC. (Refer [Section 2.3.4](#), [Section 2.3.5](#))

## Appendix A Data Types and Ranges

Users can specify the data type of variables in the Variables Area (refer [Section 2.2.1](#)) or in the Variables window (refer [Section 2.2.2](#)).



Below are the available basic data types and ranges:

(\*) stands for the commonly used data type.

Data types	Size in-bits		Range of Values
BOOL (*)	Boolean		TRUE or FALSE
STRING (*)	Character string		A max. of 255 characters
SINT	8-bit	Signed small integer	-128 to +127
USINT		Unsigned small integer	0 to +255
BYTE			
INT	16-bit	Signed integer	-32768 to +32767
UINT		Unsigned integer	0 to +65535
WORD			
DINT (*)	32-bit	Signed double integer	-2147483648 to +2147483647
UDINT		Unsigned double integer	0 to +4294967295
DWORD			
REAL (*)		Floating point	$\pm 3.4 \times 10^{-38}$ to $\pm 3.4 \times 10^{38}$
TIME (*)		Time of day	T#0ms to T#23h59m59s999ms
LINT	64-bit	Signed long integer	$-2^{63}$ to $+(2^{63}-1)$
LREAL		Floating point	$\pm 1.7 \times 10^{-308}$ to $\pm 1.7 \times 10^{308}$
ULINT		Unsigned long integer	0 to $+(2^{64}-1)$
LWORD			
<b>Note: "ULINT" and "LWORD" are not supported for Win-GRAF PAC.</b>			

# Appendix B Troubleshooting while On-Line the PAC

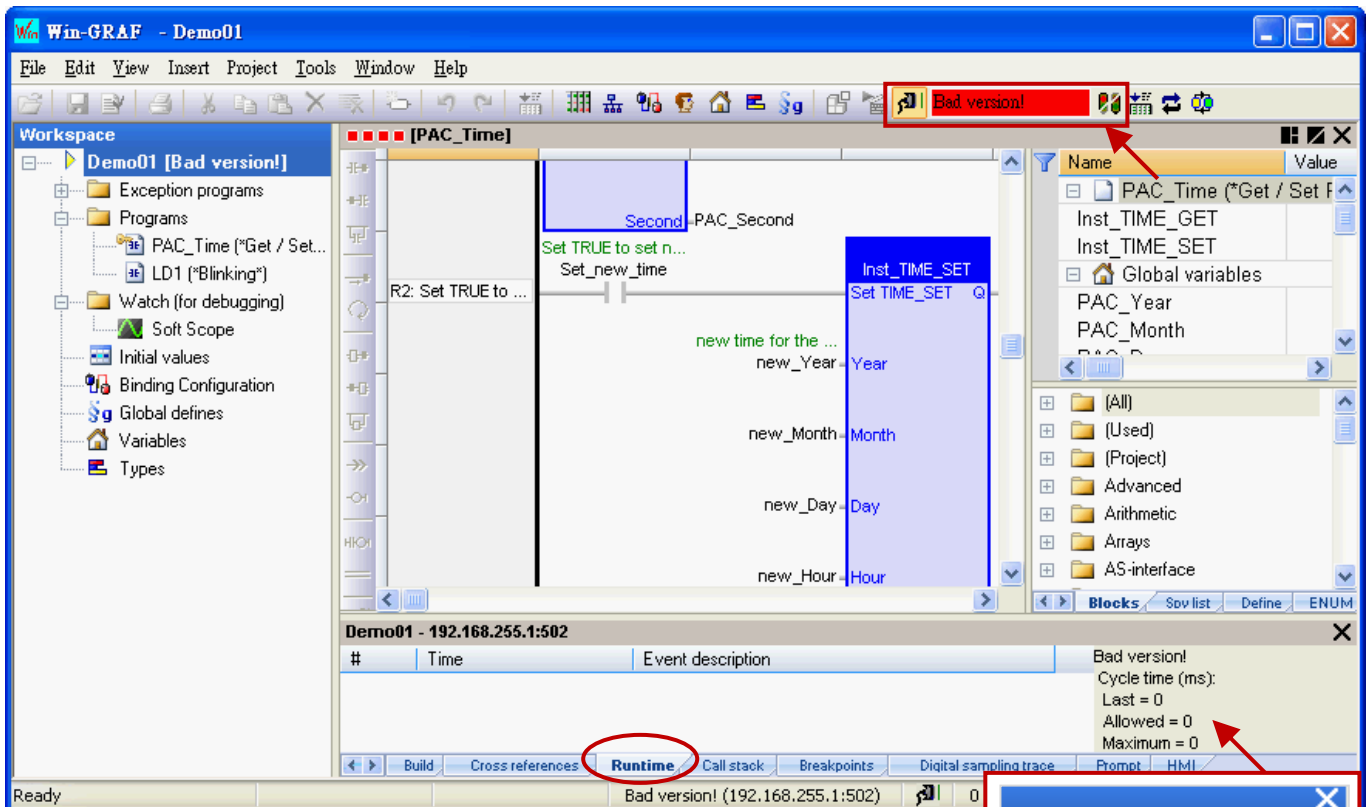
If the error message is showing up (as the screenshot below) after connecting to the Win-GRAF PAC, refer the following content to solve the problem.

- **The “Bad version!” error message:**

It means that the compiled version between the PC and the PAC is different. The most common reason is that users have modified and re-compiled the program.

### To solve the problem

1. Click the “Stop application” button to stop the running program.



2. Click the “Download” button to download the program again.

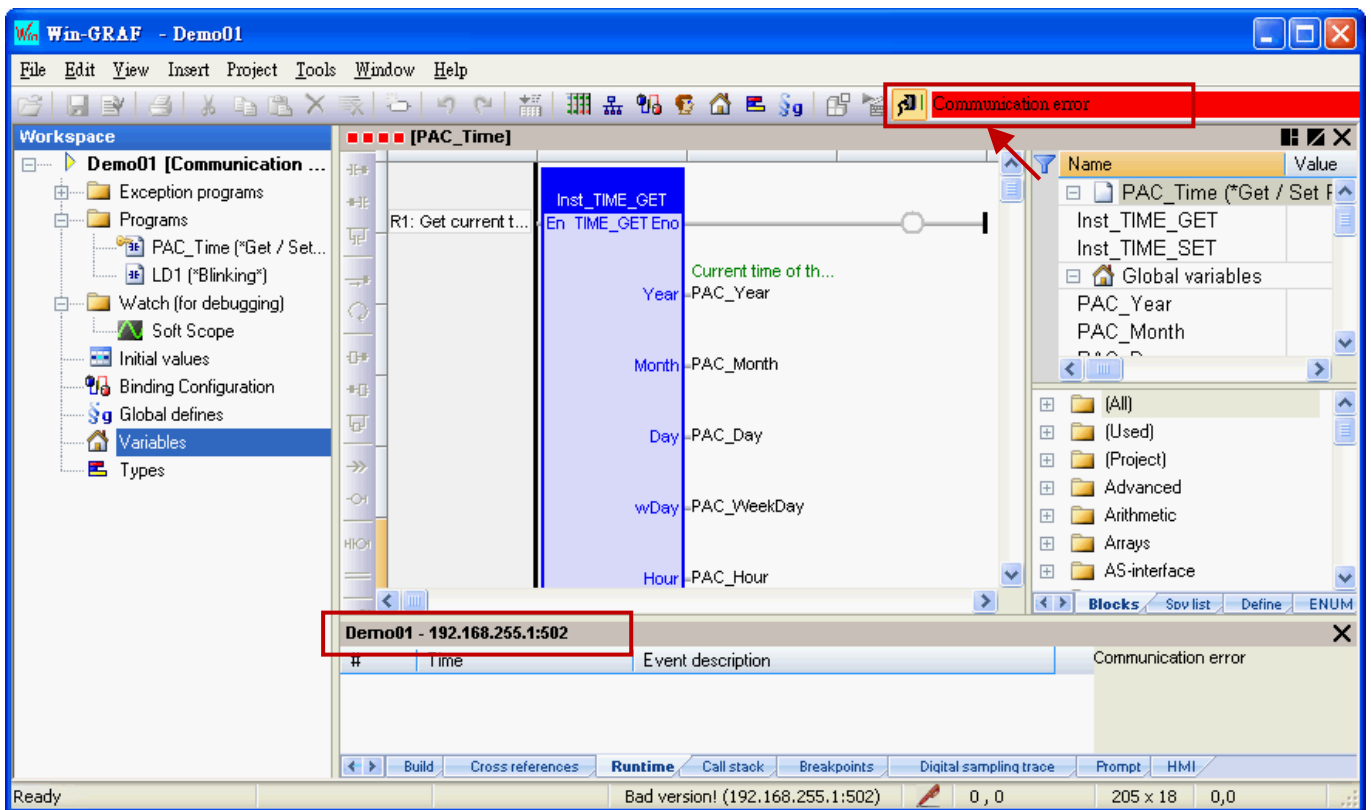


3. The “RUN” message means that the program is working properly.



- The “Communication error” error message:

A communications failure has occurred between the PC and the PAC.



### To solve the problem

1. Make sure your Win-GRAF PAC is started, and the network communication between the PC and the PAC is functioning properly.
2. Make sure the IP setting of the Win-GRAF project is the same as the PAC IP (Refer [Section 2.3.5](#), in this example, the IP address is “192.168.255.1:502”).
3. Make sure the network communication of your PC is working.