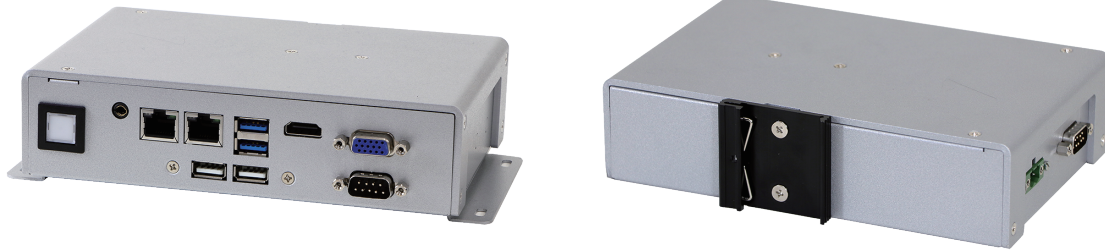


BPC-3025

Ultra Compact IoT Gateway Solution
Fanless Embedded Box PC with Intel® Apollo Lake Processor



Key Features

- Power Efficient Intel® Pentium® / Celeron® Processors
- 1x SIM Card Socket for Cellular Connections
- 1x Full-size Mini-PCIe for Wi-Fi or Bluetooth Modules
- 2x Intel® GbE Ports
- Comprehensive I/O Set for Multiple Device Connections

Applications

- IoT Gateway
- Factory Automation
- Devices Monitoring
- Intelligent Transportation Systems

➔ Ordering Information

Part No.	Description
BPC-3025-1A1	Intel® Pentium® N4200 2.5GHz Quad-core CPU, 2x USB3.0, 2x USB2.0, 1x RS-232, 1x RS-232/422/485, 2x GbE, 1x HDMI, 1x VGA, Line Out, DC 9~36V, Phoenix Connector, DIN Rail
BPC-3025-2A1	Intel® Celeron® N3350 2.4GHz Dual-core CPU, 2x USB3.0, 2x USB2.0, 1x RS-232, 1x RS-232/422/485, 2x GbE, 1x HDMI, 1x VGA, Line Out, DC 9~36V, Phoenix Connector, DIN Rail

➔ Packing List

Description
1 x BPC-3025
1 x Power Adaptor
1 x Power Cord
1 x DIN Rail Kits

➔ Optional Items

Part No.	Description
AWD-4G003	4G(LTE) EG25-G + 2 Antennas, Full Size (for Global)
AWD-WF001	Wi-Fi 802.11 b/g/n (1T1R) + 1 Antenna, Half Size
AWD-WF003	Wi-Fi 802.11 a/b/g/n/ac/BT4.0 (2T2R) + 2 Antennas (Dual Band), Half Size

➔ Specifications

Model		BPC-3025-1A1	BPC-3025-2A1
Processor System	CPU	Intel® Pentium® N4200	Intel® Celeron® N3350
	Frequency	Quad Core, 1.1GHz, up to 2.5GHz	Dual Core, 1.1GHz up to 2.4GHz
	System Chipset	N/A	
	Cache	2 GB	
	BIOS	UEFI	
Memory	Technology	Dual Channel DDR3L 1866 MHz SDRAM	
	Max. Capacity	8 GB	
	Type	2x 204-pin SO-DIMM	
Display	Graphics Engine	Intel® HD Graphics 500	
	HDMI	1x HDMI 1.4, up to 3840 x 2160 @ 30 Hz	
	DP	N/A	
	VGA	1x VGA, up to 1920 x 1200 @ 60 Hz	
	DVI	N/A	
Front I/O Interface	USB	2x USB 3.0, 2x USB 2.0	
	Serial Port	1x RS-232, 1x RS-232/422/485	
	Ethernet	2x GbE (LAN 1/2: Intel® i211AT)	
	Audio	Line Out	
	GPIO / DIO	1x 8-bit GPIO (Optional)	
	Antenna Hole	3	
	Others	N/A	
Rear I/O Interface	USB	N/A	
	Serial Port	N/A	
	Ethernet	N/A	
	Audio	N/A	
	GPIO / DIO	N/A	
	Antenna Hole	N/A	
	Others	N/A	
Storage	2.5" HDD / SSD	N/A	
	M.2	1x M.2 2242 M Key (SATA 6 Gb/s)	
	mSATA	N/A	
	RAID	N/A	
Expansion	Mini PCIe	1x Full-size (PCIe x1, USB 2.0)	
	M.2	N/A	
	PCI / PCIe	N/A	
	SIM Holder	1	
Power	Power Mode	AT / ATX	
	Power Supply Voltage	9-36V DC Input, 6.7-1.7A	
	Power Connector Type	Phoenix Connector	
	Power Consumption (Typical)	0.69A @ 12 V (8.3 W)	
Mounting	Type	Wall Mount / DIN Rail	
Environment	Operating Temperature	-20~60°C (-4~140° F) (Humidity: 60° C @ 80% RH Non-condensing) w/ Extended Temp. RAM & M.2 SSD	
	Storage Temperature	-40~85°C (-40~185° F) (Humidity: 60° C @ 95% RH Non-condensing)	
	Humidity	5~95% @ 40° C, Non-condensing	
	Vibration	1 Grms, IEC 60068-2-64, Random, 5~500 Hz, 1 Oct/min., 1hr/axis, x, y, z 3 axes	
	Shock	20 G, IEC 60068-2-27, Half-sine, 11 ms Duration	
General	Certification	CE, FCC Class A	
	Thermal Dissipation	Fanless	
	Material	Extruded Aluminum	
	Dimensions (W x H x D)	180 x 50 x 115 mm (7.09" x 1.97" x 4.53")	
	Net Weight	0.77 kg (1.7 lb)	
	Operating System	Windows 10 (IoT/Professional), Linux	

BPC-3025

→ Dimensions

