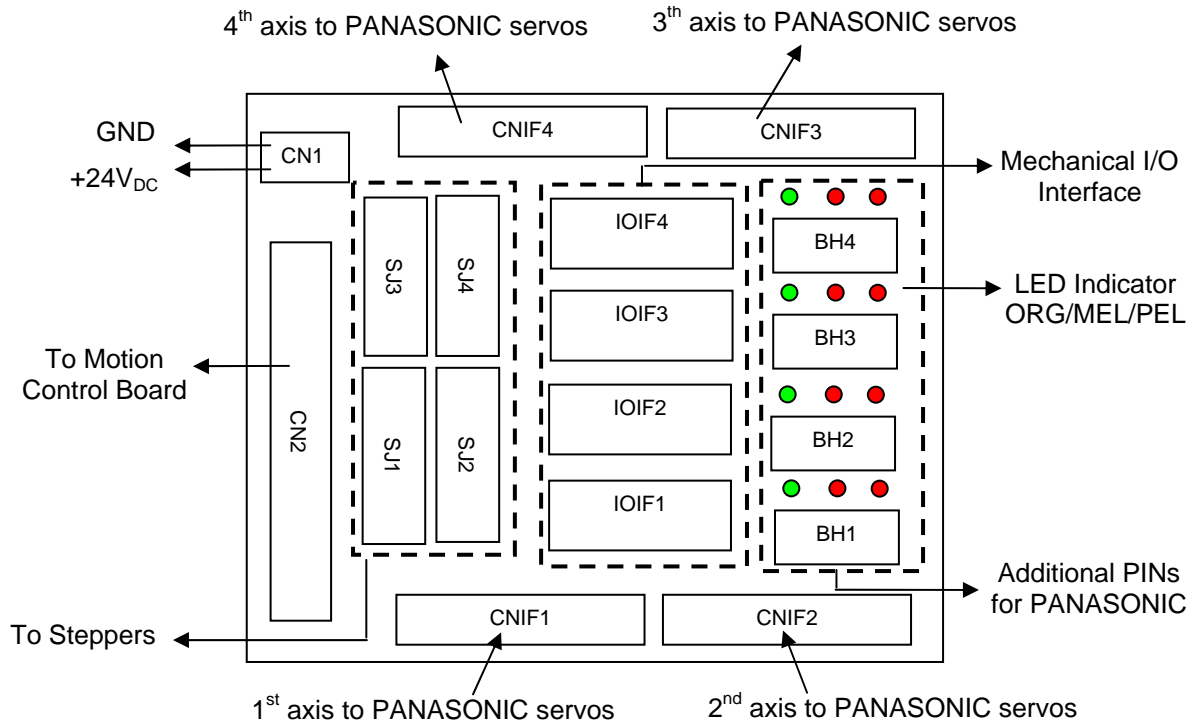


DIN-814P-A4 User Guide

Notice

The DIN-814P-A4 is used for wiring between **PANASONIC** series servo drivers / stepper with pulse trains input driver and **ADLINK PCI-8134, PCI-8164, PXI-8164, MPC-8164 and PCI-8158** motion controller card **ONLY**. Never use this terminal board with any other servo driver or cards.



Note:

- Servo & Stepper:** The DIN-814P-A4 provides 1 connection methods for each axis: CNIF# connectors for PANASONIC series servo drivers, and SJ# connectors for stepping drivers. DO NOT use both connectors at the same time.
- PSD Signal:** The PSD signal on the IOIF# connector has different functions depending on different motion cards. If using PCI-8134, PSD is used as a positive slow down signal. If using PCI-8164/PXI-8164/MPC-8164, PSD 1/2 of Axis0/Axis1 and PSD 3/4 is for LTC 3/4 of Axis3/Axis4.
- BH# Connector:** For additional pin definition made by PANASONIC, users can use BH# connector for wiring. The LED nearby BH# shows the indication of PEL, MEL and ORG.
- CNIF# Cables:** One pin-to-pin 50-PIN cables are required for connection between the CNIF# and the PANASONIC driver. It is available from ADLINK, or users may contact the local dealer or distributor to get cable information.
- JP#:** Pulse speed selection. Pin 1-3 and 2-4 short means the board link PANASONIC series servo drivers 500Kpps pin. Pin 3-5 and 4-6 short means the board link PANASONIC series servo drivers 2Mpps pin.

● PIN Assignments:

1. CNIF1~CNIF4 (PANASONIC AC Servo Driver)

No.	Name	I/O	Function	No.	Name	I/O	Function
1	OPC1	I	Operation Pulse Signal (-)	2	OPC2	I	Operation Pulse Signal (+)
3	OUT-_500K	O	500K Pulse Signal (-)	4	OUT+_500K	O	500K Pulse Signal (+)
5	DIR-_500K	O	500K Direction Signal (-)	6	DIR+_500K	O	500K Direction Signal (+)
7	I24V	I	+24V Voltage Input	8	IGND	--	Isolated Ground
9	IGND	--	Isolated Ground	10	BRK-OFF-	O	Electromagnetic Brake (-)
11	BRK-OFF+	O	Electromagnetic Brake (+)	12	ZSP	O	Zero Speed Signal
13	IGND	--	Isolated Ground	14	SPR	I	Speed Command
15	IGND	--	Isolated Ground	16	CCWTL	I	CCW Torque Limit
17	IGND	--	Isolated Ground	18	CWTL	I	CW Torque Limit
19	CZ	O	Z-phase Output	20	X		
21	EA+	I	Encoder A-phase (+)	22	EA-	I	Encoder A-phase (-)
23	EZ+	I	Encoder Z-phase (+)	24	EZ-	I	Encoder Z-phase (-)
25	IGND	--	Isolated Ground	26	VS-SEL	I	VS Select
27	TL-SEL	I	Torque Limit Select	28	DIV	I	Electronic Gear Select
29	SVON	I	Servo ON	30	ERC	I	Dev. ctr, clr. Signal
31	RES	I	Reset Signal	32	C-Mode	I	Control Mode Select
33	IGND	--	Isolated Ground	34	IGND	--	Isolated Ground
35	RDY	O	Servo Ready Signal	36	IGND	--	Isolated Ground
37	ALM	O	Alarm Signal	38	IGND	--	Isolated Ground
39	INP	O	In-position Signal	40	TLC	O	Torque Limit Command
41	IGND	--	Isolated Ground	42	IM	O	Torque Limit Monitor
43	SP	O	Speed Monitor	44	OUT-_2M	O	2M Pulse Signal (-)
45	OUT+_2M	O	2M Pulse Signal (+)	46	DIR-_2M	O	2M Direction Signal (-)
47	DIR+_2M	O	2M Direction Signal (+)	48	EB+	I	Encoder B-phase (+)
49	EB-	I	Encoder B-phase (-)	50	IGND	--	Isolated Ground

2. BH1~BH4 (PANASONIC Input/Output Signal Interface)

No.	Name	I/O	Function	No.	Name	I/O	Function
1	BRK-OFF+	O	Electromagnetic Brake (+)	4	IM	O	Torque Limit Monitor
2	BRK-OFF-	O	Electromagnetic Brake (-)	5	SP	O	Speed Monitor
3	CZ	O	Z-phase Output	6	IGND	--	Isolated Ground

3. IOIF1~IOIF4 (External Motion Input Signal Interface)

No.	Name	I/O	Function	No.	Name	I/O	Function
1	+24V	O	Voltage output	6	MSD	I	Negative Slow Switch(+)
2	IGND	--	Isolated Ground	7	ORG	I	Origin Signal
3	PEL	I	Positive Limit (+)	8	RES	I	Reset Signal
4	MEL	I	Positive Limit (-)	9	IGND	--	Isolated Ground
5	PSD	I	Positive Slow Switch (+)				

4. SJ1~SJ4 (Stepping Motor Control Interface)

No.	Name	I/O	Function	No.	Name	I/O	Function
1	OUT+	O	Pulse Signal (+)	6	ALM	I	Servo Alarm
2	OUT-	O	Pulse Signal (-)	7	+5V	O	Voltage output
3	DIR+	O	Direction Signal (+)	8	SVON	O	Servo ON
4	DIR-	O	Direction Signal (-)	9	+5V	O	Voltage output
5	EZ+	I	Index Signal	10	IGND	--	Isolated Ground

5. CN1 (External +24VDC Input Connector)

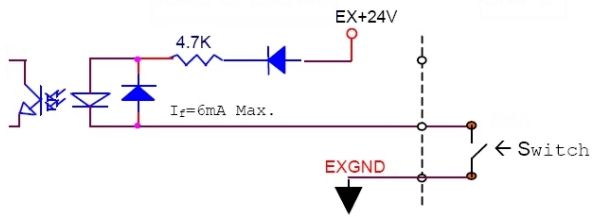
No.	Name	I/O	Function
1	EX GND	--	External Power Supply Ground
2	EX +24V	I	External Power Supply Input (+24V DC+5%)

6. JP1~JP4 (Setting for PANASONIC series servo drivers)

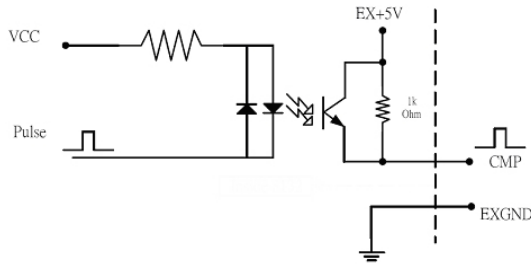
1-3 and 2-4	500Kpps
3-5 and 4-6	2Mpps

- Signal Connections of Interface Circuit

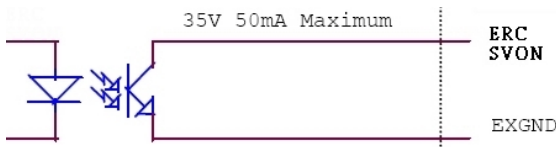
1. PEL、MEL、ORG、INP、ALM、RDY



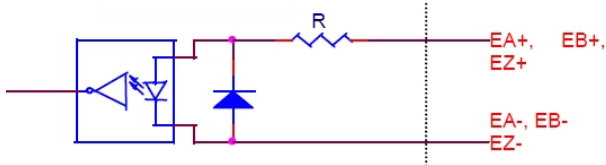
2. CMP



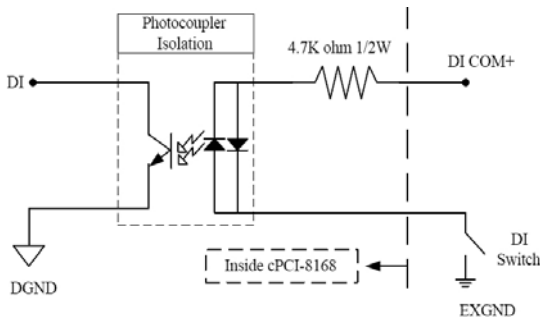
3. ERC、SVON



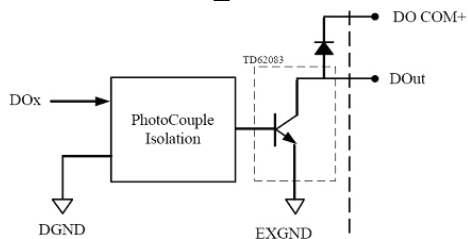
4. EA+、EB+、EZ+、EA-、EB-、EZ-



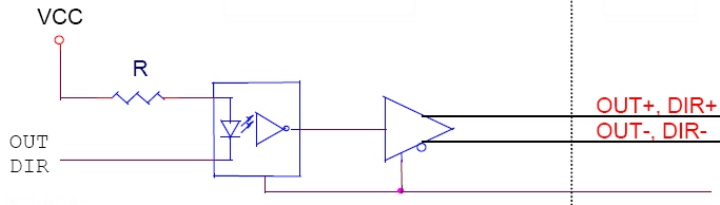
5. DIN、DI_COM



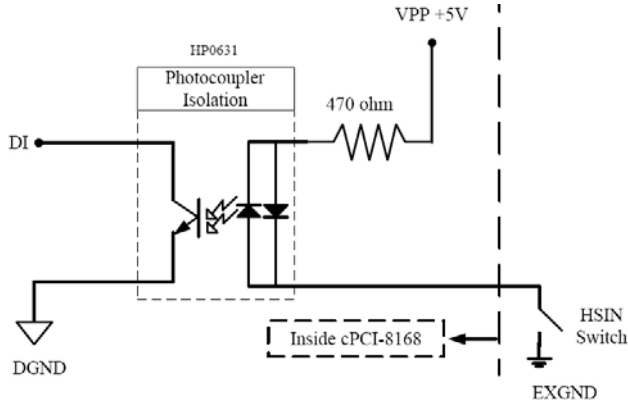
6. DOUT、DO_COM



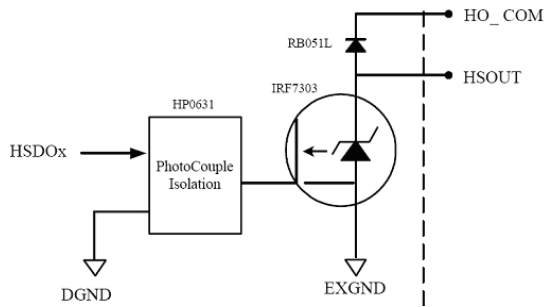
7. DIR+、OUT+、DIR-、OUT-



8. HSIN



9. HSOUT、HO_COM



Mechanical Dimensions:

