

IWS PAC



IWS-2201-CE7/IWS-4201-CE7/IWS-6201-CE7

Features

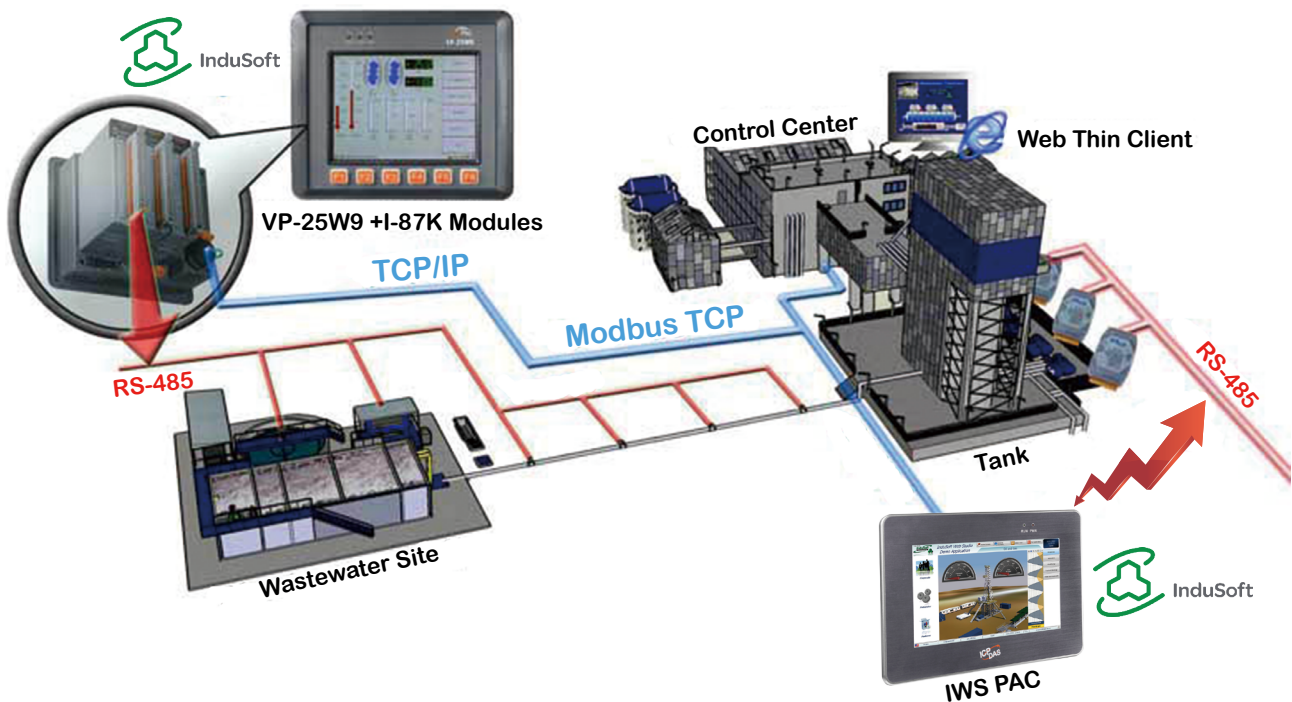
- InduSoft Web Studio Runtime
- Support Modbus, OPC, TCP/IP Client/Server
- DCON Driver for ICP DAS I/O modules
- Makes connectivity for the "internet of things" and mobile devices easily.
- 7"/10.4"/15" LCD
- Resolution: 800 x 480 ~ 1024 x 768
- Resistive Touch Panel
- AM335x (1 GHz or 720 MHz) CPU
- Windows CE 7.0
- NEMA 4/IP65 Compliant Front Panel
- Operating Temperature: -10 ~ +60°C



Introduction

The **IWS PAC** series is the new generation WinCE 7.0 based InduSoft PAC of ICP DAS. It combines a RISC-based CPU board, TFT LCD touch screen to create a ruggedized, flat panel computer perfect for a variety of control and HMI applications. It provides a variety of connectives including Gigabit Ethernet, USB port, RS-232 and RS-485. The operating system is pre-installed in the on-board Flash memory. Remote I/O expansion is available using our Ethernet I/O modules, RS-485 I/O modules, Wi-Fi and ZigBee wireless I/O modules. Designed for panel mount installation, the front panel is NEMA 4/IP6 5 rated and can withstand sprayed water, humidity and extreme dust. Designed to operate over a wide -10°C ~ 60°C ambient temperature range, the fanless design offers the ultimate in reliability with no moving parts.

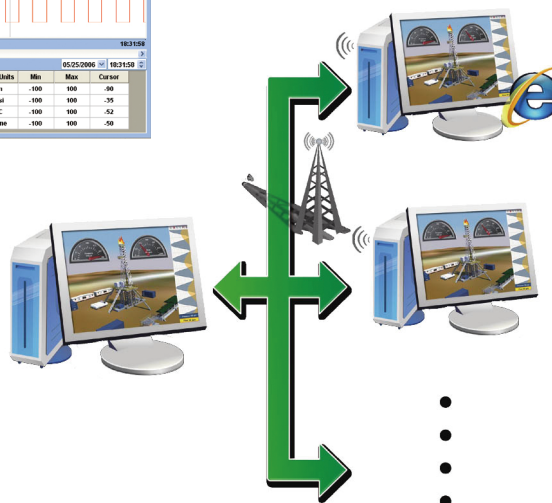
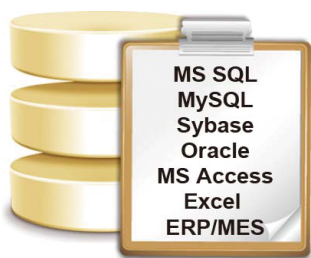
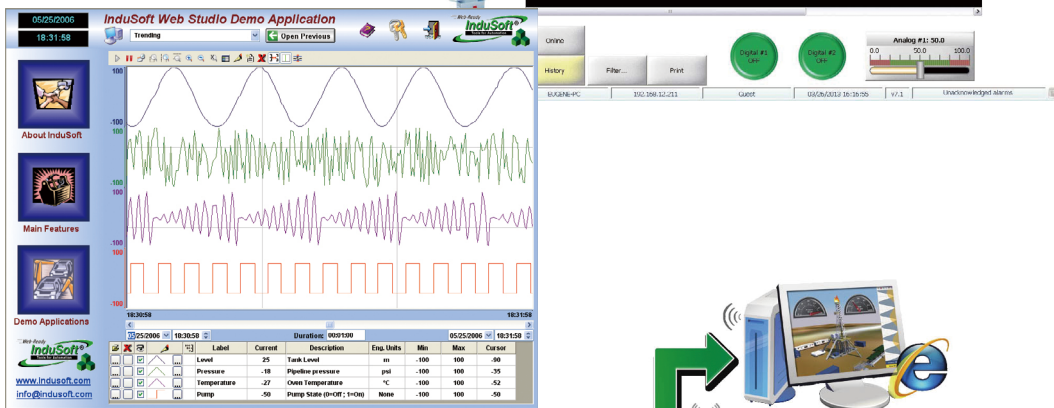
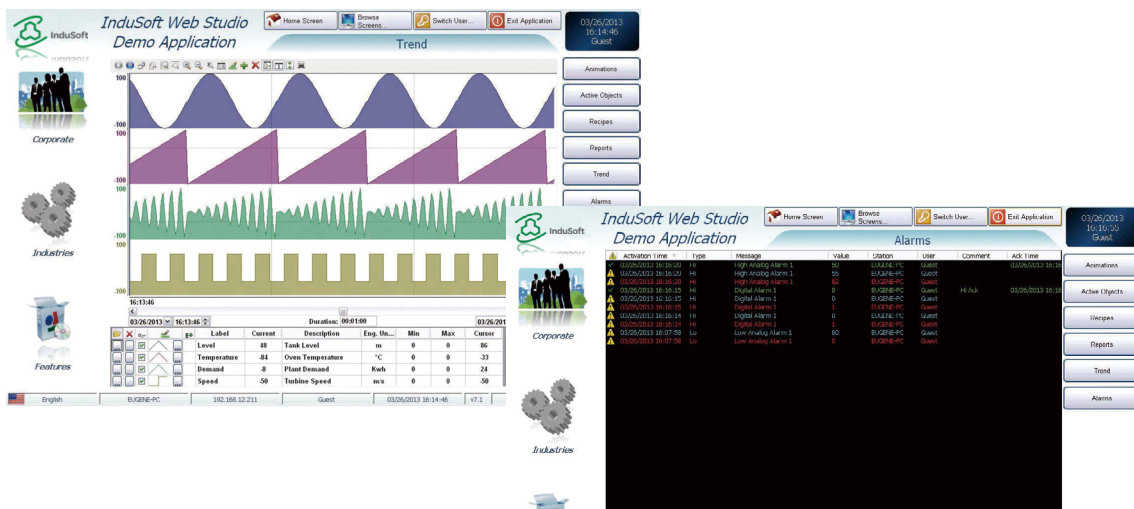
Applications



InduSoft Features

IWS applications run on microcomputers connected in real-time to machines or processors through WinPAC programmable controllers, remote I/O devices, and other data acquisition equipment. These applications consist of animated operator-interface screens, rollable I/O devices, an application tags database, and optional modules such as alarm monitors, trend charts, recipes, schedulers, and a security system.

- Intuitive script language with more than 100 standard functions is provided.
- Conform to industry standards such as Microsoft.NET, OPC, DDE, ODBC, XML.
- Full-Featured WinCE-based run-time environment (CE View).
- Dynamic library of symbols - customizable.
- ActiveX container (Windows NT/CE).
- Automatic e-mail (SMTP) and dial-up connection interface supported.
- Provide multi-level security for applications, including the Internet and Intranet.



Specifications

Models	IWS-2201-CE7	IWS-4201-CE7	IWS-6201-CE7
LCD Display			
Size	7" (16:9)	10.4" (4:3)	15" (4:3)
Resolution	800 x 480	800 x 600	1024 x 768
Brightness (cd/m ²)	400		350
Contrast Ratio	500 : 1		
LED Backlight Life (hrs)	20,000	50,000	
Touch Panel	4-wire, resistive type; light transmission: 80%	5-wire, resistive type; light transmission: 80%	
LED Indicator	2 (PWR, Run)		
Development Software			
InduSoft Software	InduSoft Web Studio Runtime		
CPU Module			
CPU	AM3352 (720 MHz)	AM3354 (1 GHz)	
SDRAM	256 MB		
MRAM	128 KB		
Flash	256 MB		
EEPROM	16 KB		
RTC (Real Time Clock)	Yes		
Hardware Serial Number	Yes, 64-bit Hardware Serial Number		
Rotary Switch	Yes (0~9)		
Yes (0~9)Audio	Earphone-out		
Communication Interface			
Ethernet	1 x RJ-45, 10/100/1000 BaseTX		
USB 2.0 (host)	2		
COM 1	RS-232/485 (DB9 connector); 2500 VDC isolated		
COM 2	RS-232/485 (DB9 connector); 2500 VDC isolated		
COM 3	-	RS-485 (Terminal Block, Data+, Data-); 2500 VDC isolated	
Mechanical			
Dimensions (W x L x H)	213 x 148 x 44 mm	293 x 231 x 54 mm	381 x 305 x 65 mm
Installation	Panel Mounting		
Ingress Protection	Front Panel: NEMA 4 / IP65		
Environmental			
Operating Temperature	-10 ~ +60°C		
Storage Temperature	-20 ~ +70°C		
Ambient Relative Humidity	10 ~ 90% RH (non-condensing)		
Power			
Power from terminal block	Yes, 12~48 VDC		
Power form PoE	Yes, IEEE 802.3at		
Isolation	-	1 kV	
Consumption	0.25A @ 24 VDC	0.45A @ 24 VDC	0.65A @ 24 VDC

Ordering Information

IWS-2201-CE7	InduSoft based PAC with 7" LCD (WinCE7 OS)
IWS-4201-CE7	InduSoft based PAC with 10.4" LCD (WinCE7 OS)
IWS-6201-CE7	InduSoft based PAC with 15" LCD (WinCE7 OS)

Windows Embedded CE Runtime

InduSoft-CE1500R	CEView Standard for Windows CE Run-time (1,500 Tags and 3 Drivers)
-------------------------	--

Additional Package

InduSoft-Web Upgrade	4 (default), 8
InduSoft-SV Upgrade	1 (default), 2, 4, 8

InduSoft Resources

InduSoft (ICP DAS)	http://www.icpdas.com/products/Software/InduSoft/indusoft.htm
InduSoft (Original)	http://www.indusoft.com/

Option Accessories

DIN-KA52F	24 V/1.04 A, 25 W Power Supply with DIN-Rail Mounting
MDR-20-24	24 V/1 A, 24 W Power Supply with DIN-Rail Mounting
CA-0950-3W	5.0 M 3-Pin Male to Female D-sub RS-232 Cable w/Ferrite Core