

EAC mini (EACIL20) is an industrial IoT gateway with low power consuming Intel® Apollo Lake N3350 1.1 GHz processor and excellent expansion possibilities. Expansion module offers rich options from additional serial interfaces, CANBus, DIDO to Wi-Fi and 4G LTE. Wireless connectivity and all necessary connectors allow the EAC mini (EACIL20) to send data from manufacturing facilities directly to cloud server. Compact size and rich expansions make EAC mini to be suitable for IoT, smart factory and machine automation applications.

Product Features

- Intel® Apollo Lake N3350 1.1 GHz
- Fanless cooling system
- Compact size 100 x 70 x 31 mm (w/o mounting bracket)
- Expansion module design
- Various mounting options: desk, wall, VESA, DIN-Rail
- Suitable for smart factory applications



Optional Configuration

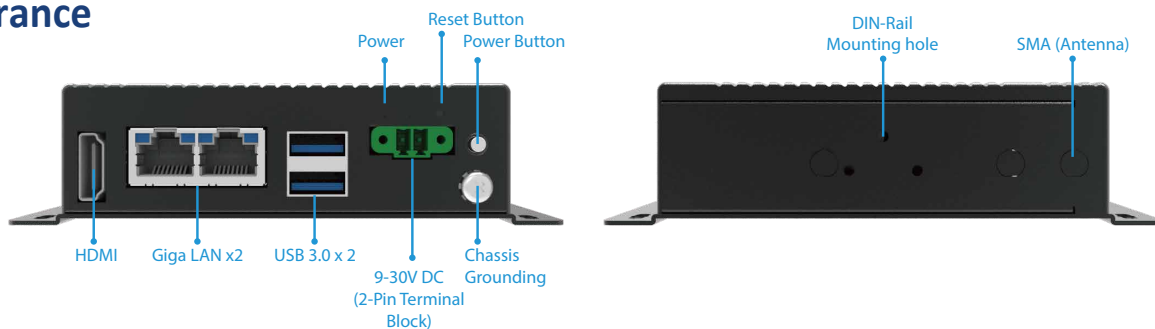
- **Optional Storage**
32GB mSATA
64GB mSATA
- **Optional Mounting**
VESA Mounting
DIN-Rail Mounting

Optional Expansion Module

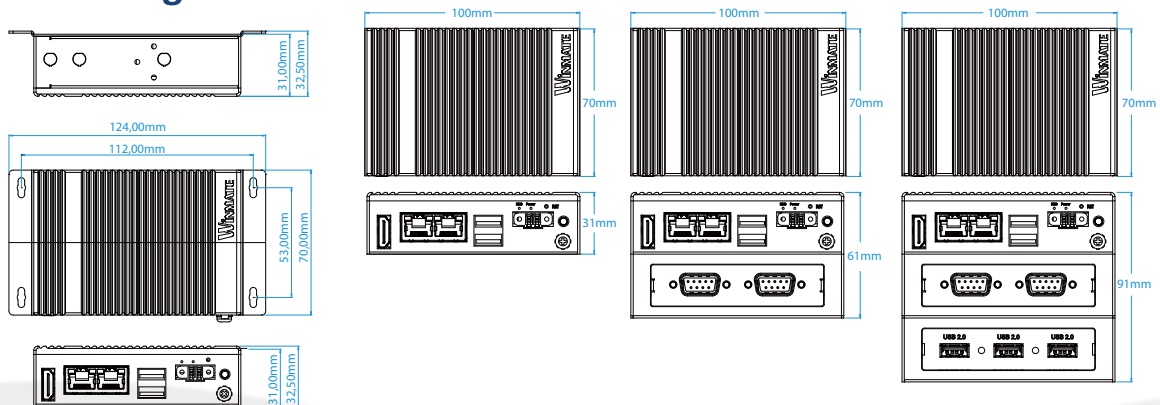
EACWSLT-222	4G
EACWSLT-223	3G
EACWSLT-231	3-port RS232/422/485 w/ isolation
EACWSLT-232	24-Channel Digital I/O w/ isolation
EACWSLT-233	2-port CANBUS w/ isolation
EACWLST-234	2-port USB 2.0 x 3
EACWLST-235	2-port RS232/422/485 w/ isolation



Appearance



Mechanical Drawing



Product Specifications

System Specification		Certificate	
CPU	Intel® Apollo Lake N3350 1.1 GHz	EMC & Safety	CE, FCC
Graphics Engine	Intel® HD Graphics	Operating System (Optional)	
BIOS	Insyde UEFI	OS	Windows® 10 IoT Enterprise Linux Ubuntu
Watchdog Timer	Programmable 256 levels, timer interval 1 to 255 sec.	Ordering information	
Technology	4GB LPDDR3 1866MHz	EACIL20-100-A432	Intel N3350, 4G RAM, 32GB eMMC, 2 x USB 3.0, 2 x GbE LAN, 1 x HDMI
Storage		EACIL20-100-A432W10	Intel N3350, 4G RAM, 32GB eMMC, 2 x USB 3.0, 2 x GbE LAN, 1 x HDMI, Windows 10
eMMC	Onboard 32 GB (default), up to 128GB	EACIL20-101-A432	Intel N3350, 4G RAM, 32GB eMMC, 2 x USB 3.0, 2 x GbE LAN, 1 x HDMI, Wi-Fi(Client)
mSATA	up to 1TGB (Option)	EACIL20-102-A432	Intel N3350, 4G RAM, 32GB eMMC, 2 x USB 3.0, 2 x GbE LAN, 1 x HDMI, 4G
Expansion		EACIL20-103-A432	Intel N3350, 4G RAM, 32GB eMMC, 2 x USB 3.0, 2 x GbE LAN, 1 x HDMI, 3G
mPCIe	1 x Full-size mPCIe slot	EACIL20-104-A432	Intel N3350, 4G RAM, 32GB eMMC, 2 x USB 3.0, 2 x GbE LAN, 1 x HDMI, Access Point
USB Wafer	2 x USB Wafer	EACIL20-100-A464	Intel N3350, 4G RAM, 64GB eMMC, 2 x USB 3.0, 2 x GbE LAN, 1 x HDMI,
External I/O		EACIL20-100-A464W10	Intel N3350, 4G RAM, 64GB eMMC, 2 x USB 3.0, 2 x GbE LAN, 1 x HDMI, Windows 10
USB	2 x USB3.0	EACIL20-119-A432	Intel N3350, 4G RAM, 32GB eMMC, 2 x USB 3.0, 2 x GbE LAN, 1 x HDMI, mSATA expansion
Ethernet	2 x Giga LAN RJ45 Connector	Expansion Module (Optional)	
HDMI	1 x HDMI, supports 1920 x 1080@60 Hz	EACWSLT-222	4G
Buttons and LED Indicators		EACWSLT-223	3G
LED Indicator	1 x Power	EACWSLT-231	3-port RS232/422/485 w/ isolation
Button	1 x Power Button 1 x Reset Button	EACWSLT-232	24-Channel Digital I/O w/ isolation
Power Management		EACWSLT-233	2-port CANBUS w/ isolation
Power Supply	9V to 36V DC, 2-Pin Terminal Block	EACWLST-234	2-port USB 2.0 x 3
Grounding Protection	Chassis Grounding	EACWLST-235	2-port RS232/422/485 w/ isolation
Mechanical Specification		Accessories	
Dimensions	100 (W) x 70 (H) x 31(D) mm(One layer) 100 (W) x 70 (H) x 61(D) mm(Double layer)	Standard	<ul style="list-style-type: none"> Quick Start Guide (P/N #915211101025) Driver CD(P/N #917111101000) Terminal Block 2 pin to 2.5Ø Female Adapter Cable (P/N #94J602G020K2)
Weight	0.6 kg (One layer), 0.7 kg (double layer)	Optional	<ul style="list-style-type: none"> WLAN External Antenna (P/N #397SM0000002) WWAN External Antenna (P/N #39700000000H) AC Adapter 12V/36W (P/N #922D036W12V6) VESA Mounting Kit (P/N #98K000A0009A) DIN Rail Mounting Kit (P/N #98K000A00099)
Mounting	Desk Mounting (Default), Wall Mounting (Default), VESA Mounting (Optional), DIN-Rail Mounting (Optional),		
Cooling System	Fanless		
Enclosure	Metal Housing		
Environment			
Operating Temp.	-15~55° C		
Storage Temp.	-15~70° C		
Operating Humidity	10~90% RH		
Shock	Operating, IEC 60068-2-27		
Vibration	Operating, IEC 60068-2-64		
IP Rating	IP30		