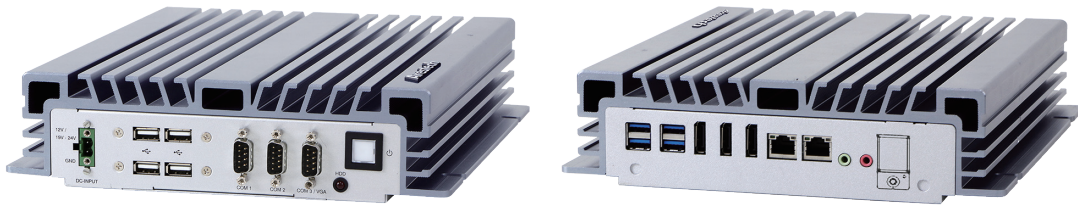


BPC-5080

Arestech

Fanless Embedded Box PC with 9th / 8th Generation Coffee Lake
6-Core Intel® Core™ i9 / i7 / i5 / i3 Processor



Key Features

- 9th / 8th Gen. Intel® Core™ i9 Processor up to 3.2 GHz
- Triple Independent Displays, Supporting up to 4K Resolution
- BPC-5080-1A1 Supports RAID 0 / 1
- -20 ~ 60°C Operating Temperature

Applications

- Embedded Digital Signage Control Systems
- Factory Automation
- Image Processing
- Machine Vision and Motion Control
- Machine Automation

→ Ordering Information

Part No.	Description
BPC-5080-1A1	Intel® 9th/8th Gen. Core™ i LGA1151 CPU, Q370, 4x USB3.1 Gen 1, 4x USB2.0, 2x RS-232, 1x RS-232/422/485, 2x GbE, 3x DP, RAID 0/1, Line Out, Mic In, DC 12/19~28V, Phoenix Connector
BPC-5080-2A1	Intel® 9th/8th Gen. Core™ i LGA1151 CPU, H310, 4x USB3.1 Gen 1, 4x USB2.0, 2x RS-232, 2x GbE, 2x DP, 1x VGA, Line Out, Mic In, DC 12/19~28V, Phoenix Connector

→ Packing List

Description
1 x BPC-5080
1 x Power Adaptor
1 x Power Cord

→ Optional Items

Part No.	Description
AWD-WF001	Wi-Fi 802.11 b/g/n (1T1R) + 1 Antenna, Half Size
AWD-WF003	Wi-Fi 802.11 a/b/g/n/ac/BT4.0 (2T2R) + 2 Antennas (Dual Band), Half Size
AWD-WF004	Wi-Fi 802.11 b/g/n/BT4.0 (1T1R) + 2 Antennas (Dual Band), M.2 2230 Type
AWD-WF005	Wi-Fi 802.11 a/b/g/n/ac/BT4.0 (2T2R) + 2 Antennas (Dual Band), M.2 2230 Type
i7-9700T	Intel® 9th Gen. Core™ i7-9700T (12M Cache, 4.30 GHz)
i7-8700T	Intel® 8th Gen. Core™ i7-8700T (12M Cache, 4.00 GHz)
i5-8500T	Intel® 8th Gen. Core™ i5-8500T (9M Cache, up to 3.50 GHz)
i3-8100T	Intel® 8th Gen. Core™ i3-8100T (6M Cache, 2.40 GHz)
G5400T	Intel® Pentium™ G5400T (4M Cache, 3.10 GHz)
G4900T	Intel® Celeron™ G4900T (2M Cache, 2.90 GHz)

→ Specifications

Model		BPC-5080-1A1	BPC-5080-2A1
Processor System	CPU	Socket LGA 1151 for Intel® Core™ i9/i7/i5/i3/Celeron (CoffeeLake-S)	
	Frequency	N/A	
	System Chipset	Intel® Q370	Intel® H310
	Cache	N/A	
	BIOS	UEFI	
Memory	Technology	Dual-Channel DDR4 2666 MHz SDRAM	
	Max. Capacity	Intel Core i9/i7/i5 CPUs Support up to 64GB (32GB per DIMM) Intel Core i3/Pentium/Celeron CPUs Support up to 32GB (16GB per DIMM)	
	Type	2x (260-pin SO-DIMM)	
Display	Graphics Engine	Intel® UHD Graphics 630	
	HDMI	N/A	
	DP	3x DP 1.2, up to 4096 x 2304 @ 60 Hz	2x DP 1.2, up to 4096 x 2304 @ 60 Hz
	VGA	N/A	1x up to 1920 x 1200 @ 60 Hz
	DVI	N/A	
Front I/O Interface	USB	4x USB 2.0	
	Serial Port	3x COM (COM1/2 RS-232 Only, COM3 RS-232/422/485)	2x COM (COM1/2 RS-232 Only)
	Ethernet	N/A	
	Audio	N/A	
	GPIO / DIO	N/A	
	Antenna Hole	N/A	
	Others	N/A	
Rear I/O Interface	USB	4x USB 3.1 Gen 1	
	Serial Port	N/A	
	Ethernet	2x GbE (LAN 1: Intel® I219LM, LAN 2: Intel® I210)	2x GbE (LAN 1: Intel® I219V, LAN 2: Intel® I210)
	Audio	Line Out, Mic In (Realtek ALC887/897 HD)	
	GPIO / DIO	N/A	
	Antenna Hole	2	
	Others	N/A	
Storage	2.5" HDD / SSD	2x SATA III (6.0 Gb/s), (7 mm 2.5" HDD Only)	
	M.2	1x M.2 M Key, 2242/2260/2280 (PCIe x4 & SATA III)	1x M.2 M Key, 2242/2260/2280 (SATA III)
	mSATA	N/A	
	RAID	RAID 0/1	N/A
Expansion	Mini PCIe	1x Full Size (PCIe x1 & USB 2.0)	
	M.2	1x M.2 E key 2230 (PCIe x1, USB 2.0 & CNVi)	
	PCI / PCIe	N/A	
	SIM Holder	N/A	
Power	Power Mode	AT / ATX	
	Power Supply Voltage	12/19~28V DC Input	
	Power Connector Type	Phoenix Connector	
	Power Consumption (Typical)	0.65A @ 24V (15.7W)	
Mounting	Type	Wall Mount	
Environment	Operating Temperature	-20~60°C (-4~122°F) (Humidity: 60°C @ 80% RH Non-condensing) w/ Extended Temp. RAM & M.2 SSD	
	Storage Temperature	-20~75°C and 60°C @ 95% RH Non-condensing	
	Humidity	5~95% @ 40°C, Non-condensing	
	Vibration	1 Grms, IEC 60068-2-64, Random, 5~500 Hz, 1 Oct/min., 1hr/axis, x, y, z 3 axes	
	Shock	20 G, IEC 60068-2-27, Half Sine, 11 ms Duration	
General	Certification	CE, FCC Class A	
	Thermal Dissipation	Fanless System	
	Material	Extruded Aluminum	
	Dimensions (W x H x D)	238 x 61 x 245 mm (9.37" x 2.40" x 9.64")	
	Net Weight	3.22 kg (7.09 lb)	
Operating System	Windows 10 (IoT/Professional), Linux Kernel 4.0.x or above		

BPC-5080

→ Dimensions

