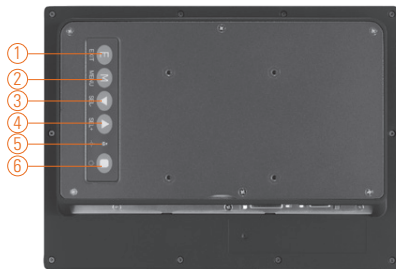
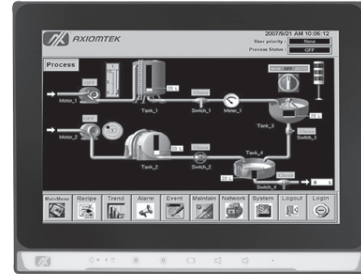


P6103W NEW

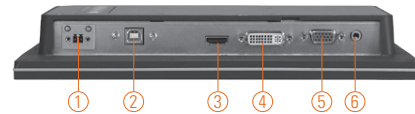
10.1" WXGA TFT Widescreen Industrial LCD Monitor

Features

- 10.1" WXGA TFT LED backlight LCD
- 10.1" projected capacitive multi-touch
- NEMA 4/12 (IP65)- compliant flat panel monitor
- Supports panel mount, wall mount and VESA arm
- Full range screw-type (locked) AC-in or 12V/24V DC-in (option)
- DVI-D, VGA and HDMI with multi-signal inputs



1. Exit
2. Menu
3. SEL-
4. SEL+
5. Power LED
6. Power switch



1. Power
2. T/S port
3. HDMI
4. DVI-D
5. VGA
6. Line-in

Introduction

The P6103W is an ultra slim industrial LCD monitor, which adopts 10.1-inch 350 nits WXGA LED backlight LCD display and supports multi-signal interfaces including DVI, VGA and HDMI. Featuring NEMA 4/12 & IP65 compliant front bezel, screw-type adaptor plug design, and 12/24V DC-In means it is fit for all kinds of industrial environments. Moreover, the P6103W supports panel mount, wall mount or VESA FPMPMI (Video Electronics Standards Association Flat Panel Monitor Physical Mounting Interface) mounting. With the compact mechanism design, users can enjoy free from space constraint. It is especially suitable for POI/POS, excellent HMI and all kinds of heavy-duty industrial fields.

Specifications

Front Bezel	NEMA 4/12 (IP65)-compliant, metal front bezel																						
Mounting	Panel mount, wall mount or VESA arm FPMPMI mounting (video electronics standards association flat panel monitor physical mounting interface)																						
LCD Panel	<table border="0"> <tr> <td>Display</td> <td>10.1" WXGA TFT LCD</td> </tr> <tr> <td>Max. Resolution</td> <td>1280 x 800</td> </tr> <tr> <td>Max. Colors</td> <td>16.7M</td> </tr> <tr> <td>Active Area (mm)</td> <td>216.96 x 135.60</td> </tr> <tr> <td>Pixel Pitch (mm)</td> <td>0.1695 x 0.1695</td> </tr> <tr> <td>Response Time</td> <td>25ms</td> </tr> <tr> <td>Backlight</td> <td>LED backlight</td> </tr> <tr> <td>Backlight MTBF</td> <td>25,000 hrs</td> </tr> <tr> <td>Viewing Angle (H/V)</td> <td>170°/170°</td> </tr> <tr> <td>Contrast Ratio</td> <td>800 (TYP.)</td> </tr> <tr> <td>Brightness (cd/m²)</td> <td>350 nits</td> </tr> </table>	Display	10.1" WXGA TFT LCD	Max. Resolution	1280 x 800	Max. Colors	16.7M	Active Area (mm)	216.96 x 135.60	Pixel Pitch (mm)	0.1695 x 0.1695	Response Time	25ms	Backlight	LED backlight	Backlight MTBF	25,000 hrs	Viewing Angle (H/V)	170°/170°	Contrast Ratio	800 (TYP.)	Brightness (cd/m ²)	350 nits
Display	10.1" WXGA TFT LCD																						
Max. Resolution	1280 x 800																						
Max. Colors	16.7M																						
Active Area (mm)	216.96 x 135.60																						
Pixel Pitch (mm)	0.1695 x 0.1695																						
Response Time	25ms																						
Backlight	LED backlight																						
Backlight MTBF	25,000 hrs																						
Viewing Angle (H/V)	170°/170°																						
Contrast Ratio	800 (TYP.)																						
Brightness (cd/m ²)	350 nits																						
Display Control	OSD (on screen display)																						
Display Mode	VGA 640 x 350 (70Hz), VGA 640 x 480 (60/72/75Hz), VGA 720 x 400 (70Hz), SVGA 800 x 600 (60/72/75Hz), WXGA 1280 x 800 (60/72/75Hz)																						

Specifications

Input Signal	DVI-D VGA HDMI Touchscreen: Serial RS-232 or USB interface	
I/O Connectors	1 x RS-232 or USB for touchscreen version 1 x DVI-D 1 x VGA 1 x HDMI 1 x Screw-type DC power input	
Power Adapter	Screw-type external AC/DC power adapter	
Power Consumption	15 W	
Touchscreen	Thickness	Resistive: 3.2 mm
	Light Transmission	Resistive: 80%
	Power Consumption	Resistive: +5V @ 100mA
	Touch Life	Resistive: 35million touches Controller interface: RS-232 D-type 9pin male connector or USB
Dimensions	260.8 mm (10.27") x 38 mm (1.5") x 194.1 mm (7.64")	
Packing Dimensions	372 mm (14.65") x 99 mm (3.9") x 274 mm (10.79")	
Weight (net/gross)	TBD	
Environment	Operating temperature: 0°C ~ +50°C (+32°F ~ +122°F) Relative humidity: 20%~90% @ 40°C, non-condensing	
Packing List	1 x VGA cable 1 x RS232 or USB cable for touchscreen (for touch version) 1 x Audio cable 1 x EU/US power cord (for AC version)	
Certificate	CE	

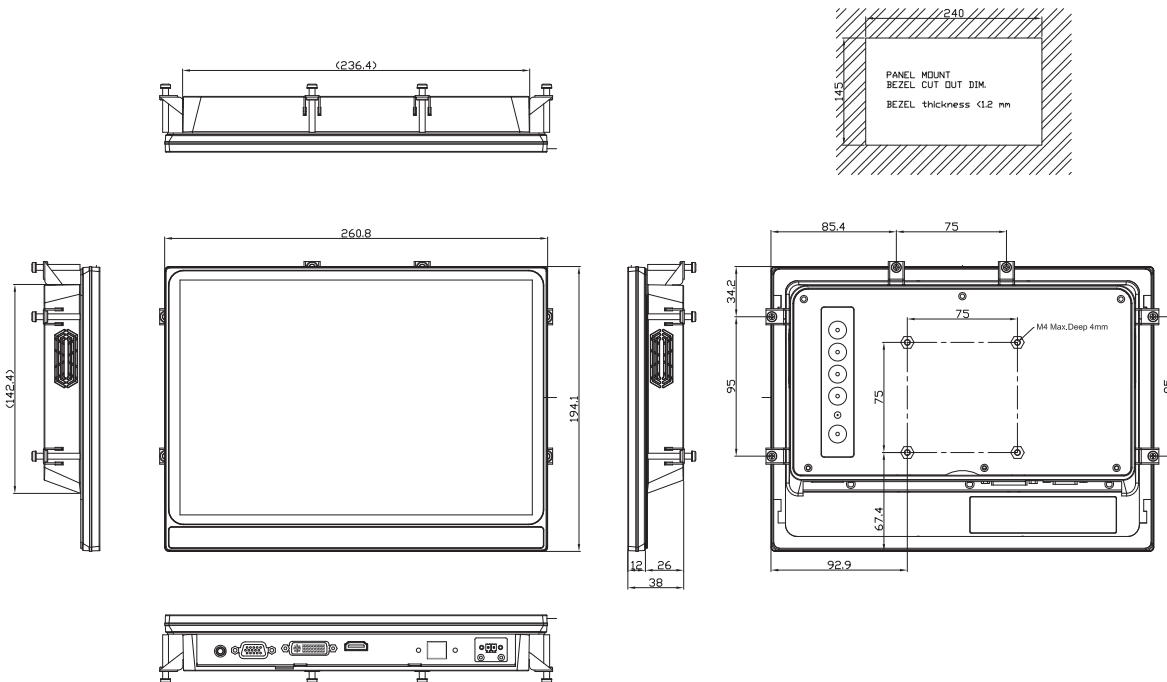
Ordering Information

AC Power	PCT (USB)	P6103WPC-AC-U-US-EU
	Glass	P6103WPG-AC-US-EU
12V/24VDC Power	PCT (USB)	P6103WPR-DC-U
	Glass	P6103WPG-DC

Optional Accessories

5946L203800E	HDMI cable
5946L1713400E	DVI cable
TBD	Panel mount kit
82231770050E	Wall mount kit
E226171106	Desktop stand

Dimensions



* All specifications and photos are subject to change without notice.

axiomtek.com



© 2017 Axiomtek Co., Ltd. All rights reserved.

678